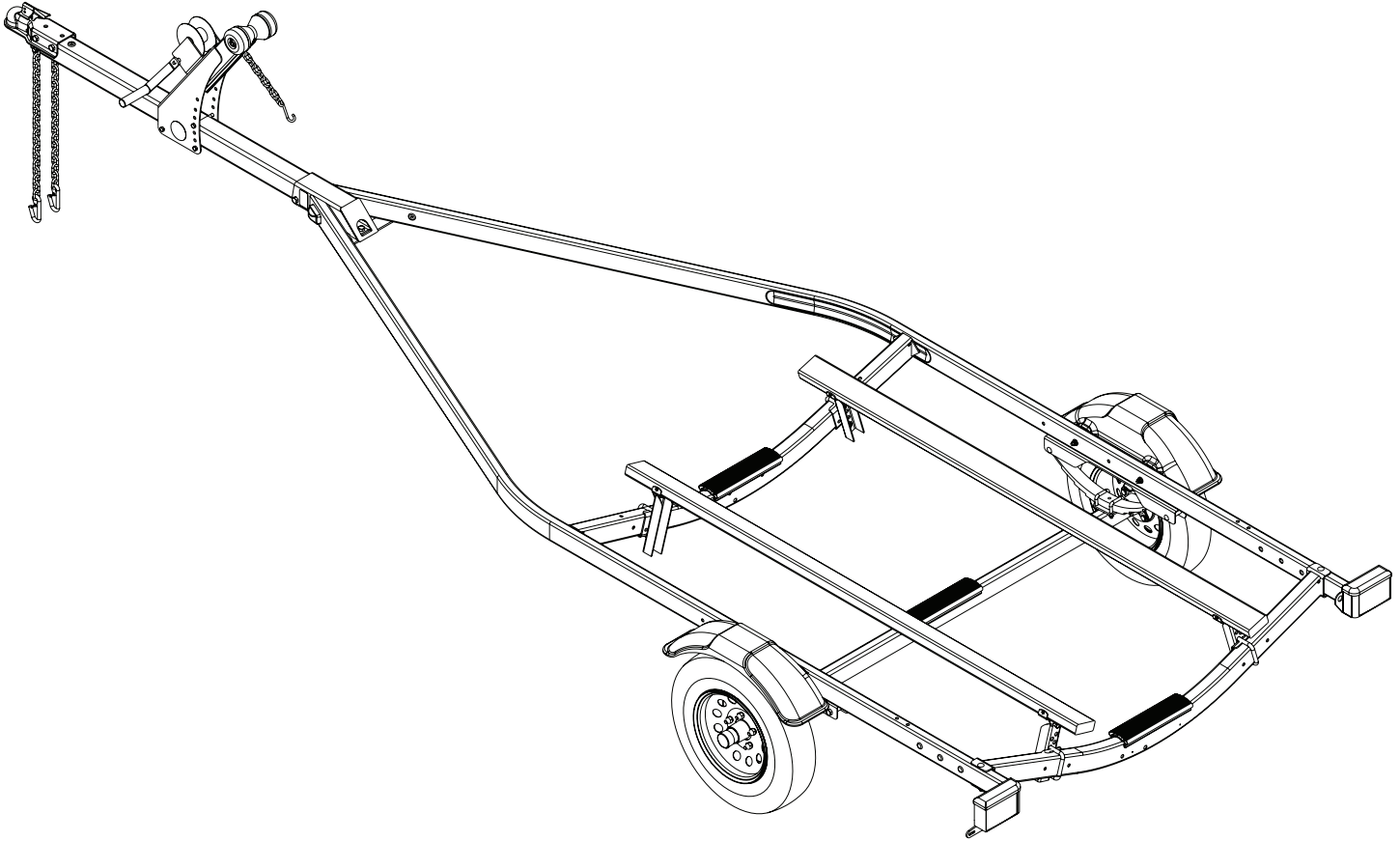


SLV15



SLV15 ShoreLand'r V-Frame/Bunk - 1500 lb.

- 67542-- Hardware Bag - Coupler & Chains
- 80510-- Frame Bundle SLV15
- 60493-- Tongue - 60"
- 62340 Literature Bag - Trailers
*5.30 X 12-C Mod Rim Tire Assy.

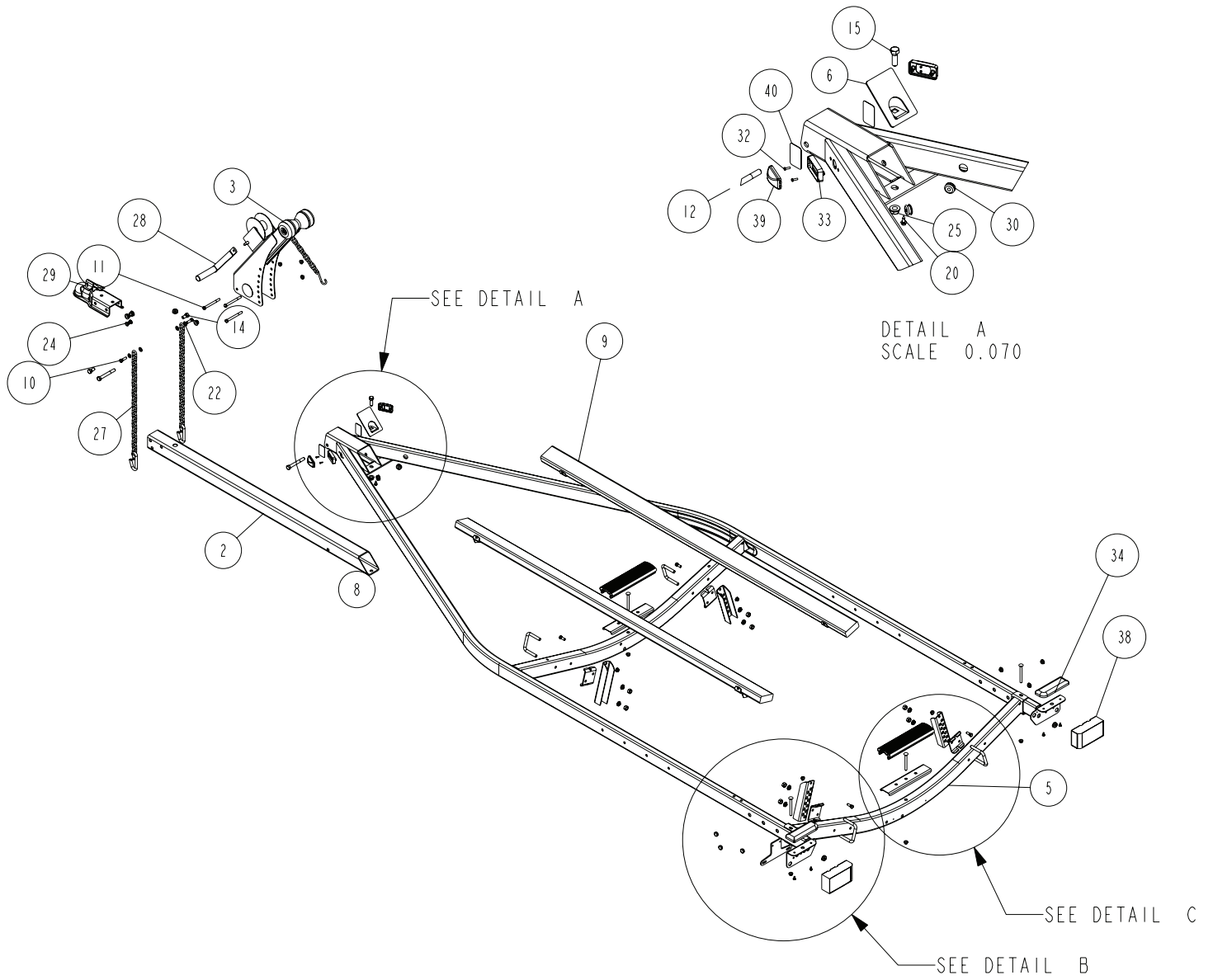
*Check with your dealer/customer service representative for current tire/rim assembly part number.

Table of Contents:

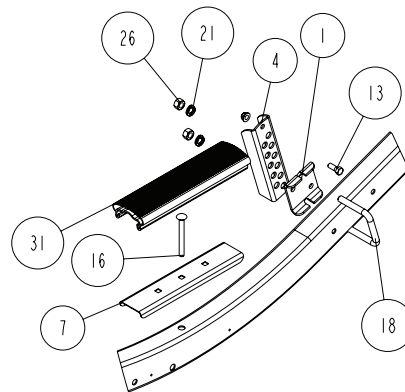
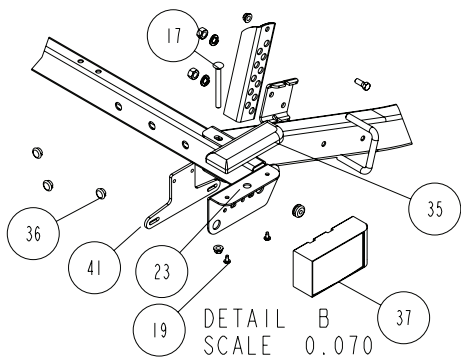
	Page
Frame Drawing & Bill of Materials	2-3
Safety Instructions	3
Winch Dwg/BOM	4
Bunk Dwg/BOM	5
Chassis Dwg/BOM	6
Axle Dwg/BOM	7
Assembly Instructions	8
Trailer Adjustments	8

ShoreLand'r offers its product line in painted finishes. When ordering parts, it is important that you specify the finish or color you have on your product. The 5-digit number along with a 2-digit space __, note that the parts can be purchased in various finishes.

- 00..... Galvanized
- 03..... Black



DETAIL A
SCALE 0.070



DETAIL C
SCALE 0.070

ITEM	PART #	DESCRIPTION	QTY	NOTE
1	60462	ADJUSTABLE BUNK CLAMP	4	
2	60493	TONGUE 60IN 1817N BI	1	
3	60602	TELESCOPING WINCH SUB ASSY	1	
4	60850	SHORT ADJ BUNK BRKT	4	
5	66124	REAR CROSS WMENT 64 WIDE	1	
6	68272	TONGUE COVER PLATE	1	
7	68673	2" PLASTIC CHANNEL BRACKET	2	
8	69440	FRAME WMENT 1-1/2X3X160-1/4 X64	1	
9	69441	BUNK ASSY W/BRKTS	2	
10	0110037	HH 3/8-16 X 1 1/4 CS GR5	2	
11	0110060	HH 3/8-16 X 4 CS GR5	3	
12	0110114	HH 1/2-13 X 4 CS GR5	2	
13	0140040	HH 3/8-16 X 1 CS GR5	4	
14	0140090	HH 1/2-13 X 1 CS GR5	2	
15	0140094	HH 1/2-13 X 1 1/2 CS GR5	1	
16	0210130	CARR 3/8-16 X 3 3/4 GR5	2	
17	0210133	CARR 3/8-16 X 4 GR5	2	
18	0310384	SUB 1/2 X 3 9/16 X 3	4	
19	0810126	SCREW 1/4 X 1/2 SELF TAP TYPE B	4	
20	0810945	SCREW SELFDRIILL 1/4-14X3/4	1	
21	1310040	LOCKWASHER 1/2 S/T MED	8	
22	1340095	WASHER USS FLAT 3/8	4	
23	1410151	HEX NUT #10-24	2	
24	1440101	HEX LOCKNUT FLANGE 3/8-16 W/T	13	
25	1440102	HEX LOCKNUT FLANGE 1/2-13 W/T	5	
26	1440159	HEX NUT FINISH 1/2-13	8	
27	2210300	CHAIN SAFETY 1/4(7MM)X 20LK W/LA	2	
28	3110241	WINCH HANDLE DL600 800 1100 14	1	
29	3310010	COUPLER #980 P2 ASSEMBLED	1	
30	3510030	GROMMET 7/8IN MOLDED	5	
31	3510132	AXLE PAD 12IN BLK	2	
32	3510158	PLASTIC DRIVE RIVOT	4	
33	3510253	LIGHT BEZEL - AMBER	2	
34	3510255	STEP PAD RIGHT 2 1/2 X 7	1	
35	3510256	STEP PAD LEFT 2 1/2 X 7	1	
36	3520017	PLUG 11/16IN WHITE PLASTIC	6	
37	5110013	DRY LAUNCH LIGHT ASSY (LEFT)	1	
38	5110014	DRY LAUNCH LIGHT ASSY (RIGHT)	1	
39	5110112	MARINE YELLOW CLEARANCE LIGHT	2	
40	5110127	REFLECTOR ANDERSON AMBER	2	
41	5110348	BO LICENSE PLATE BRACKET	1	
-	5110410	HARNESS FRAME LEFT JET BOAT	1	
-	5110411	HARNESS FRAME RIGHT JET BOAT	1	
-	5110455	DO-RAY DOUBLE GROUND WIRE	1	

SAFETY INSTRUCTIONS

Proper tongue weight must be maintained.

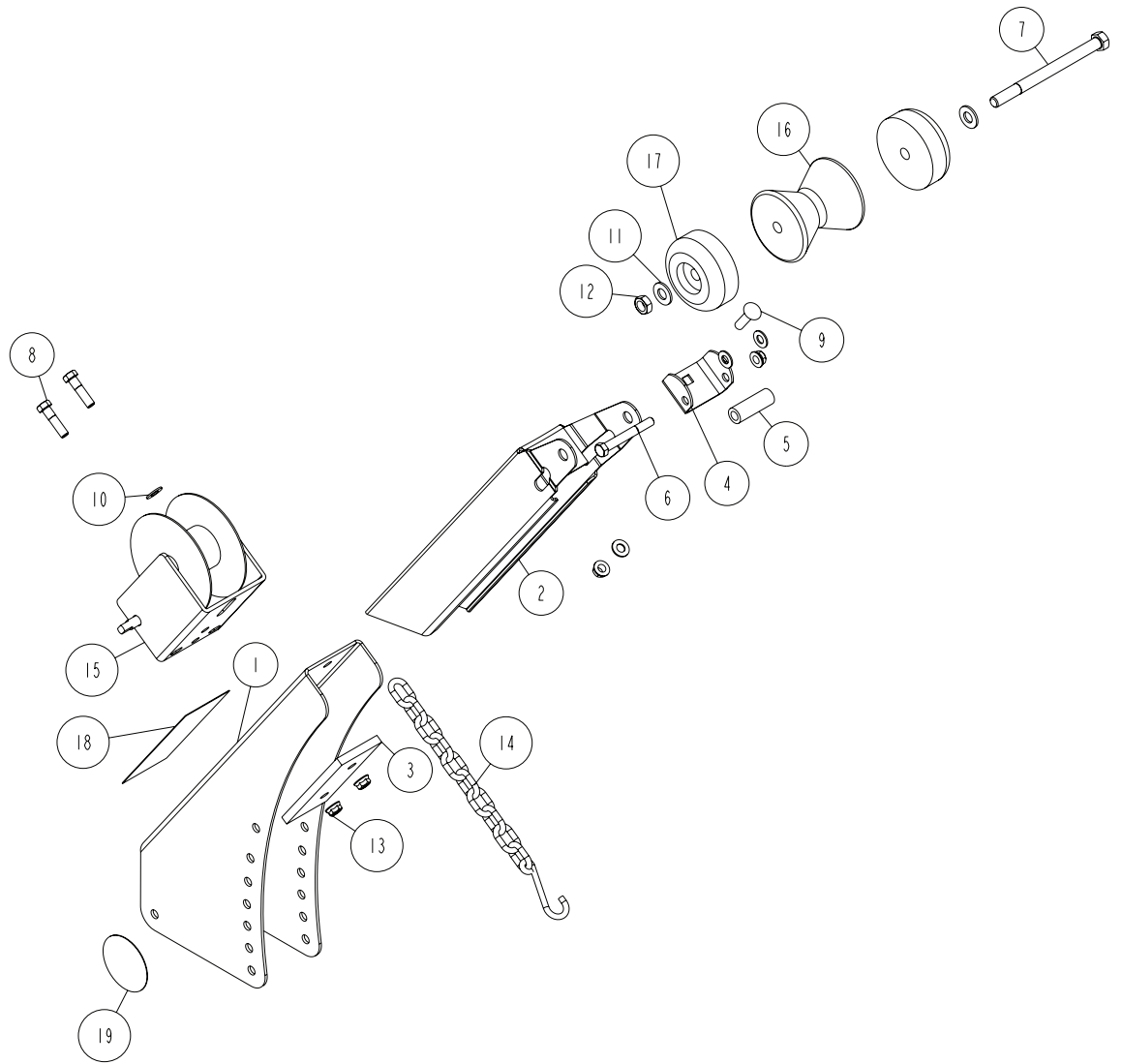
Before towing, check the following to ensure that:

1. All parts, bolts, nuts and wheel lug nuts are tight.
2. All wheel lug nuts must be tightened to a minimum torque rating of 85 ft/lb.
3. Lug nuts must be re-torqued after the first 50 miles, then periodically there after.
4. Tires are inflated to manufacturer's standards. (See tire sidewall)
5. Wheel bearings have adequate grease.
6. Hitch ball is the proper diameter and has a rating equal to or greater than the GVWR of the trailer.
7. Coupler is properly attached and secured to coupler ball.
8. Trailer safety chains are crossed under the tongue and attached to towing vehicle.
9. All lights are operational. Note: It is recommended that the trailer lights be disconnected before backing into the water.
10. Tie downs, winch strap and bow-eye safety chain are secure.
11. Trailer tongue jack is in up or travel position.

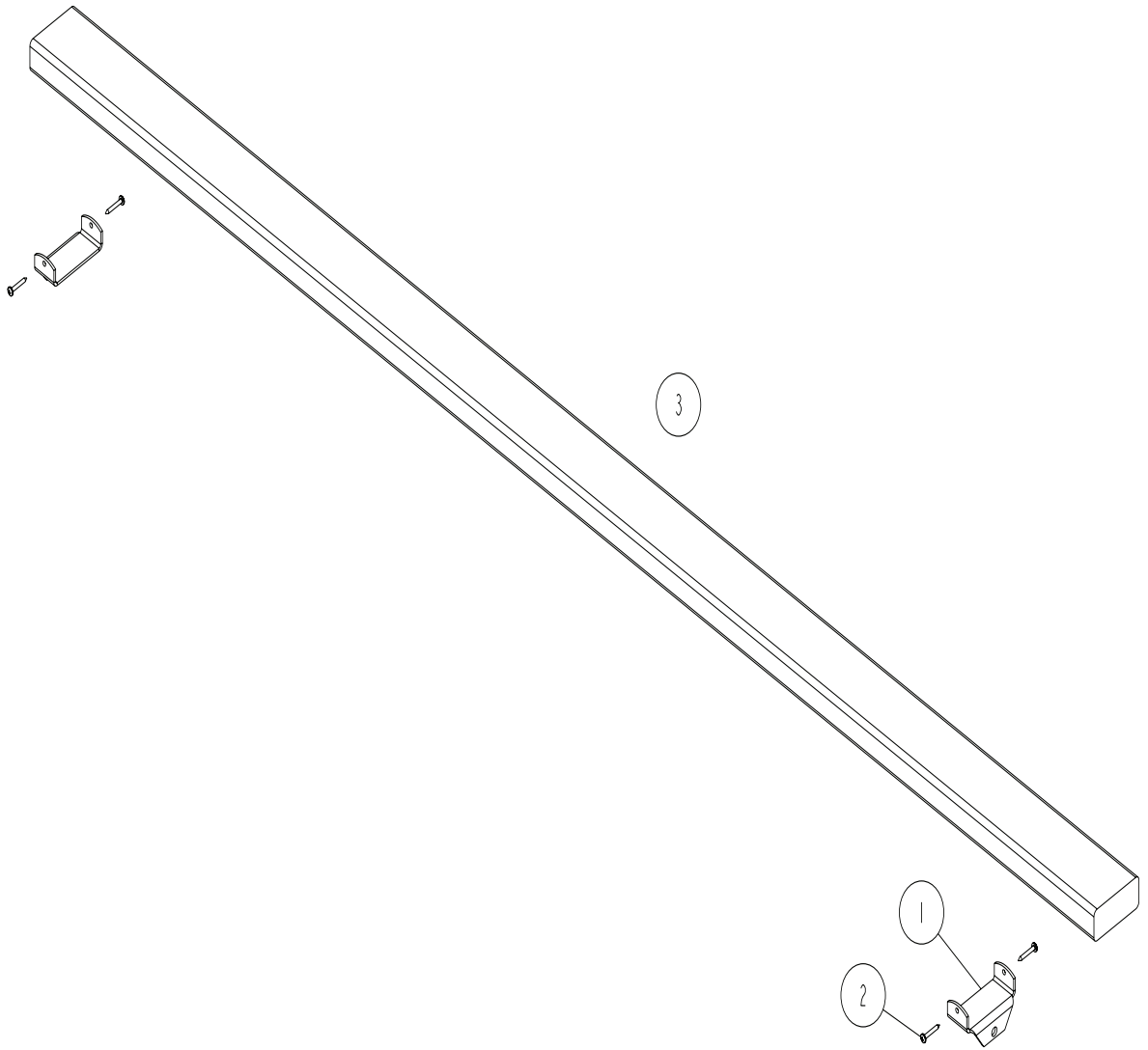
Refer to your **ShoreLand'r** Owner's Guide and other decals on trailer for additional information.

Rev C 8/28/06

4810709

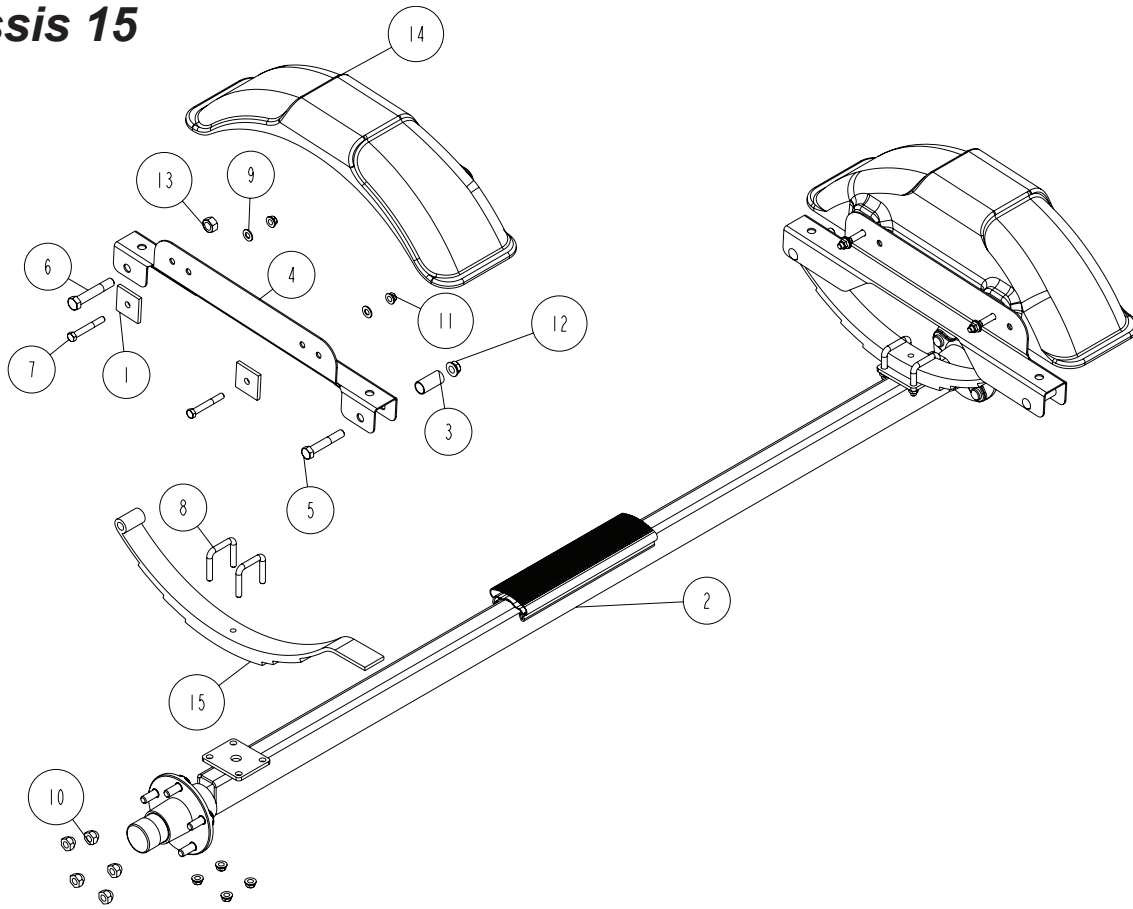


ITEM	PART #	DESCRIPTION
1	68267	OUTSIDE WINCH CHANNEL
2	68268	WINCHSTAND INSIDE CHANNEL
3	68608	WINCH POST SUPPORT PLATE
4	68612	WINCH STRAP GUIDE BRKT
5	68670	BUSHING
6	0110054	HH 3/8-16 X 3 CS GR5
7	0120130	HH 1/2-13 X 6 1/2 CS GR5
8	0140045	HH 3/8-16 X 1 1/2 CS GR5
9	0220110	CARR 3/8-16 X 1 1/2 FULL THRE
10	1340095	WASHER USS FLAT 3/8
11	1340100	WASHER USS FLAT 1/2
12	1440096	HEX JAM LOCK NUT 1/2 THIN
13	1440101	HEX LOCKNUT FLANGE 3/8-16 W/T
14	2210145	CHAIN 1/4(7MM)X 10 LINKS
15	3110344	WINCH DL1402 W/20 FT STRAP
16	3510587	ROLLER 4" BOW YATES TAN #450
17	3510590	ROLLER 3 1/2" ENDCAP YATES TA
18	4810709	DECAL TRAILER CAUTION AND WAR
19	4811451	DECAL NMMA CERTIFIED TRAILER

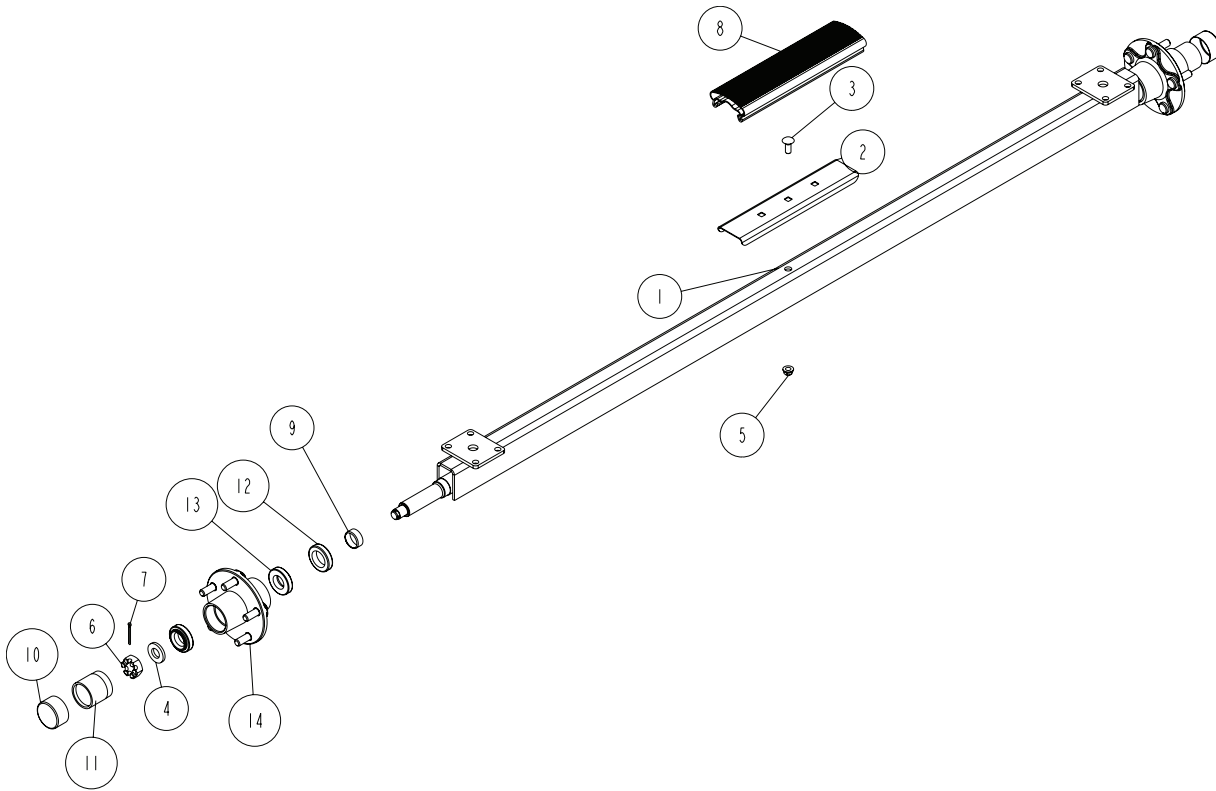


ITEM	PART #	DESCRIPTION	QTY	NOTE
1	68674	2X4 BUNK BRKT	2	
2	0810930	SCREW SELFTAP #10-12X1 1/4 TYPE A	4	
3	3910027	BUNKWOOD 2 X 4 X 14FT FIR	1	
4	3910170	CARPET 60 IN WIDE BLACK	1	

Chassis 15



ITEM	PART #	DESCRIPTION	QTY	NOTE
1	62406	FENDER SUPPORT BRKT	4	
2	65062	AXLE ASSY 64 WIDE	1	
3	68662	SPRING BUSHING SPACER	2	
4	68978	SPRING BRACKET BOLT ON	2	
5	0110107	HH 1/2-13 X 3 CS GR5	2	
6	0110170	HH 9/16-18 X 3 1/4 CS GR5	2	
7	0120052	HH 3/8-16 X 2 3/4 CS GR5	4	
8	0310292	SUB 3/8-16 X 2 3/16 X 2	4	
9	1340095	WASHER USS FLAT 3/8	4	
10	1410229	HEX LUGNUT 1/2-20 13/16 OD Z&U	10	
11	1440101	HEX LOCKNUT FLANGE 3/8-16 W/T	12	
12	1440102	HEX LOCKNUT FLANGE 1/2-13 W/T	2	
13	1440259	HEX LOCKNUT 9/16-18 GRA	2	
14	3510123	FENDER FISHING TADPULL POLY WHITE	2	
15	4610010	SLIPPER LEAF SPRING	2	



ITEM	PART #	DESCRIPTION	QTY	NOTE
1	65060	AXLE WMENT (64 WIDE FISHING)	1	
2	68673	2" PLASTIC CHANNEL BRACKET	1	
3	0210102	CARR 3/8-16 X 1 GR5	1	
4	1340206	WASHER 1.5 OD X .765 ID X .186/.206	2	
5	1440101	HEX LOCKNUT FLANGE 3/8-16 W/T	1	
6	1440349	HEX NUT SLOTTED PLAIN	2	
7	1540038	COTTER KEY 1/8 X 1 1/2 ULTRASEAL	2	
8	3510132	AXLE PAD 12IN BLK	1	
9	4410087	SPINDLE SLEEVE - 1 1/16	2	
10	4410246	SL BEARING PROTECTOR BRA	2	
11	4410247	BEARING BUDDY - STAINLESS STEEL	2	
12	4410275	SEAL	2	
13	4440160	ROLLER BEARING 1 1/16IN	4	
14	4470337	HUB 1 1/16 X 1 1/16 CAST	2	

Final Assembly Instructions

Remove the small parts from the frame by cutting the bands. Remove the bolt bag and sort all nuts and bolts by size.

Tongue:

Remove the tongue assembly from the frame bundle and install into the tongue channel and secure with a 1/2" 4" hex bolt in the side of the tongue and tongue channel. Secure with a 1/2" flange lock nut.

Place the tongue cover over the rear of the tongue channel and secure with a 1/2" flat washer and 1/2" hex nut.

Tongue Wires:

Install the tongue wire harness through the top forward wire hole and exit the rear of the tongue channel on the frame. Install grommets and plug the tongue wire into the frame harness by color.

Safety Chain:

Insert a 3/8" X 1-1/4" hex bolt with a 3/8" flat washer and safety chain through the lower hole on the front of the tongue. Secure with a 3/8" flat washer and 3/8" flange lock nut. Repeat the procedure on the opposite side of the tongue.

Coupler:

Mount the coupler onto the tongue with one (1) 1/2" X 4" hex bolt into the rear of the coupler and tongue and using two (2) 1/2" X 1" hex bolts into the two (2) front holes on the coupler and tongue. Secure with 1/2" flange lock nuts.

Winch:

Secure the winch post to the tongue with three (3) 3/8" X 4" hex bolts and 3/8" flange lock nuts. Mount the winch handle to the winch using the special nut provided. Tighten with winch post in a location that best fits your water craft.

Axle and Wheel Assembly

Locate the axle for the trailer. Note that there is not a right or left to the axle assembly. Place one of the springs on top of the spring pad welded to the axle. Drop two (2) 3/8" x 2-3/16" x 2" U-bolts over the springs and down through the holes in the spring pad. Secure with 3/8" flange lock nuts. Repeat this process on the other spring mounting it so that it is oriented on the axle the same as the first spring.

Slip a spring bushing spacer into the rear of the spring bracket, align the bushing with the hole in the bracket and secure in position using a 1/2" x 3" hex bolt and 1/2" flange lock nut. Tighten. Repeat on the other spring bracket.

Slide the axle assembly under the trailer frame, raise up and slide the rear of the springs above the bushings just installed. Rotate the assembly up until the front spring eyes align with the front holes in the spring bracket. Insert a 9/16" x 3-1/4" hex bolt and secure with a 9/16" lock nut. Tighten. Tighten the U-bolt attaching the springs to the axles at this time and any other bolts that may have been left loose for ease of assembly.

Place the tire and wheel assemblies on the hubs and secure with the 1/2" tapered lock nuts.

Bunk:

Mount the adjustable bunk brackets with the adjustable bunk clamps to the crossmembers in a location that would best fit your watercraft. Secure with 1/2" X 3-9/16" X 3" square U-bolts and 1/2" flange lock nuts.

Secure the bunk assemblies to the adjustable bunk brackets just installed using 3/8" X 1" hex bolts and 3/8" flange lock nuts.

Refer to parts drawing on page 2 for placement.

DO NOT OVER TIGHTEN - The bunks must pivot freely to conform to the boats hull.

Tire and Wheel Assemblies

Mount the tire and wheel assemblies using the 1/2" fine threaded tapered lug nuts provided. Tighten to 80-90 ft/lb. of torque using the rotation pattern as shown in the *ShoreLandr's Owners Manual*. Re-torque the lug nuts after 50 miles of driving and then periodically thereafter.

Adjustments:

Winch:

Once the boat is positioned on the trailer, adjust the winch post to the boat, adjust the winch post to the boat. Adjust the bow stop bracket so that the rubber bow stop is just above the bow eye.