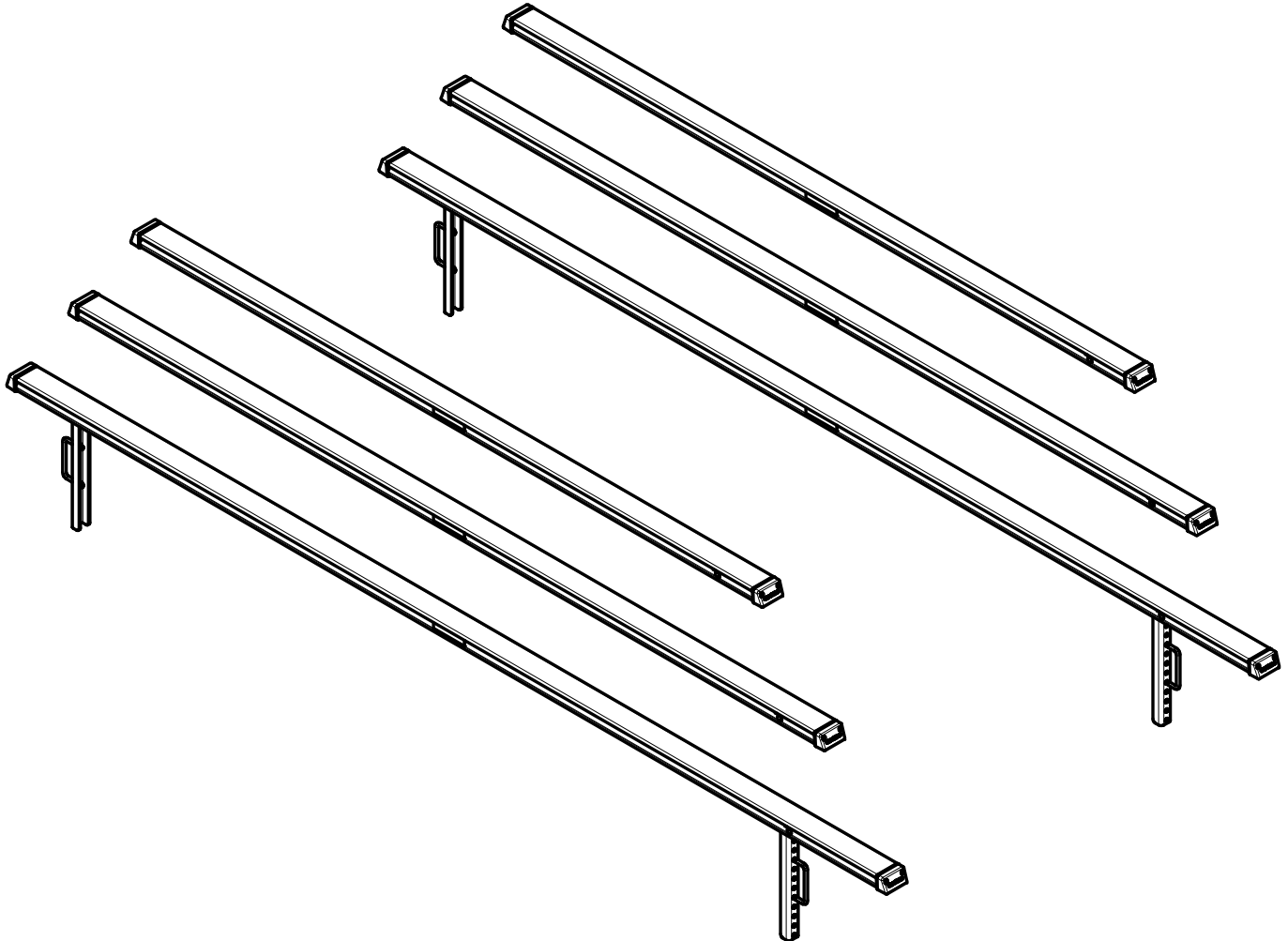
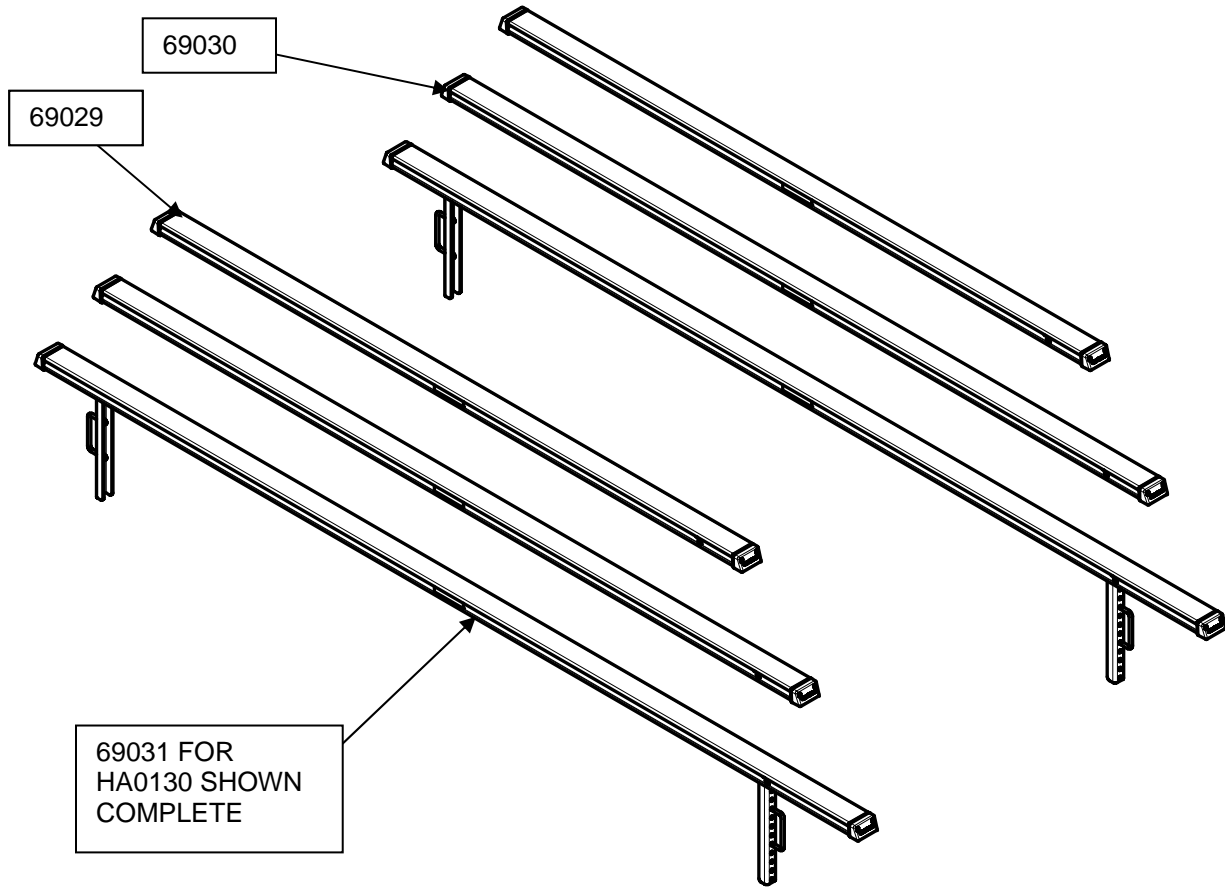


HA0128 - BUNK POLY 30/40E/M HOIST ALUM EXTRUSION
HA0129 – BUNK POLY 4H/5&6E/M HOIST ALUM EXTRUSION
HA0130 – BUNK POLY 6000 HYD HOIST ALUM EXTRUSION



The assembly of these kit starts with opening the bundles by cutting the banding and you will then open the bag and sort the hardware by size.

With this complete you will now slide a 1/2-13 X 6 5/16 X 3 1/4 stainless steel square u-bolt over the aluminum v-frame extrusion from the outside in. Once the height of the bunk is determined the adjustable bunk bracket will be slid over the square u-bolts and all will be secured with a stainless steel flat washer and a brass locknut with nylon insert. This process will be repeated for the other three adjustable bunk brackets. With the brackets in place mount the poly bunks on top of the brackets with the notched stop to the entry end of the hoist. Secure with 3/8 X 1 stainless steel hex bolts and brass locknuts with nylon inserts. These will not be secured tightly until the width from each other or from the center of the hoist and height above the aluminum v-frame is set on all of the brackets.

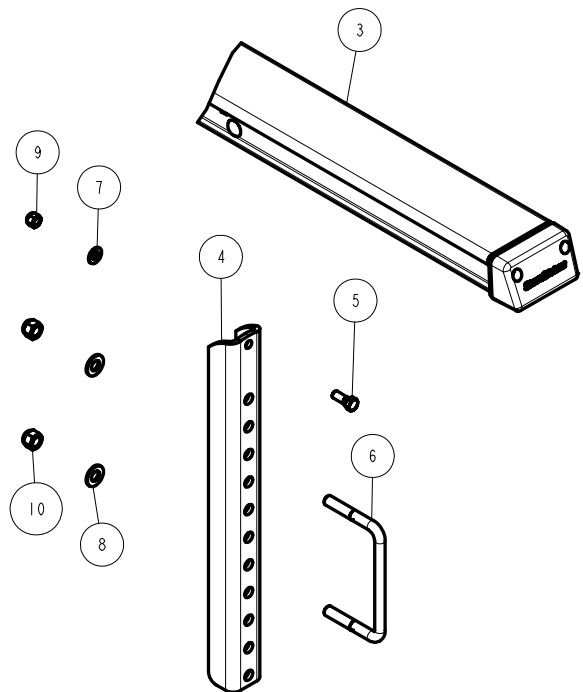


COMPLETE ASSEMBLY SHOWN FOR HA0130

ITEM	PART #	DESCRIPTION	QTY	NOTE
1	69029	BUNK ASSY 10FT POLY	2	A
2	69030	BUNK ASSY 12FT POLY	2	B
3	69031	BUNK ASSY 14FT POLY	2	
4	70816	BUNK BRKT ALUM ADJ BOAT LIFT UBOLT	4	
5	0150040	HH 3/8-16 X 1 CS STAINLESS	4	
6	0350406	SUB 1/2-13 X 6 5/16 X 3 1/4 SS	4	
7	1350095	WASHER USS FLAT 3/8 STAINLESS	4	
8	1350100	WASHER USS FLAT 1/2 STAINLESS	8	
9	1440366	HEX LOCKNUT 3/8 BRASS/NYLON INSERT	4	
10	1440367	HEX LOCKNUT 1/2-13 BRASS/NYLON	8	

NOTES	
A	BUNKS 69029 SHOWN FOR HA0128

NOTES	
B	BUNKS 69030 SHOWN FOR HA0129



At this time you will need to load the boat on the hoist to make sure all clearances are correct and all adjustments are made.