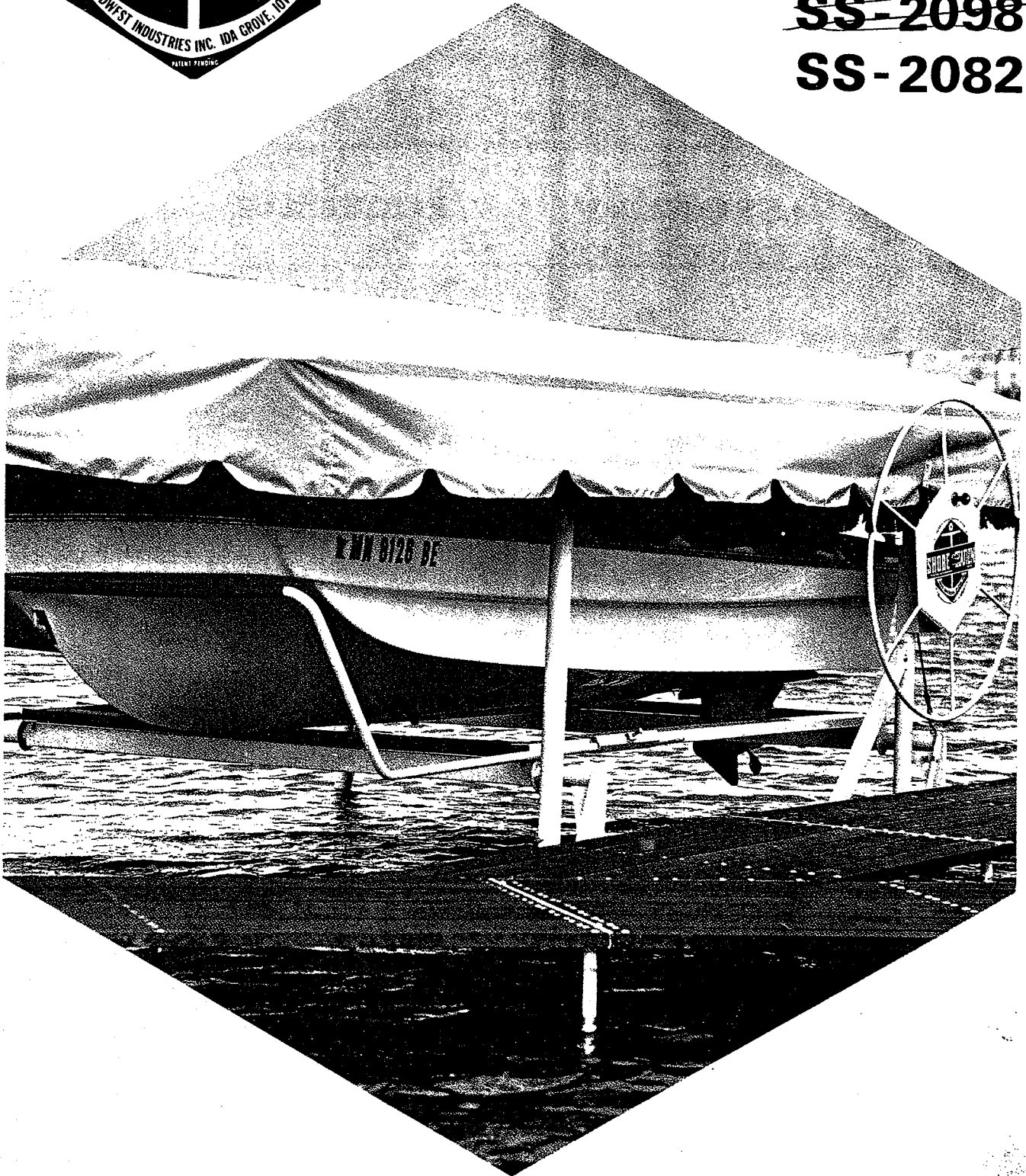




# OWNERS MANUAL

## BOAT HOIST

~~SS-2098~~ *Next.*  
SS-2082



BUNDLE LIST-ASSEMBLY-PARTS-INSTALLATION-REMOVAL-MAINTENANCE

## BUNDLE LIST

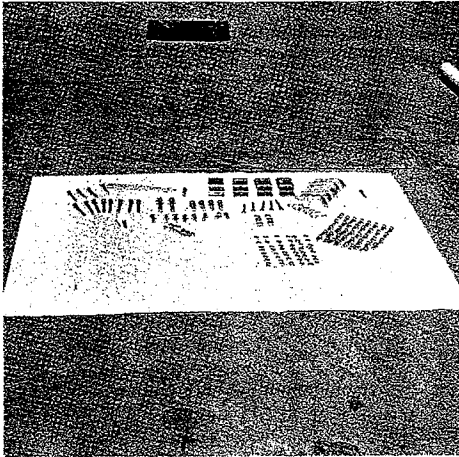
SS-2082

SS-2098

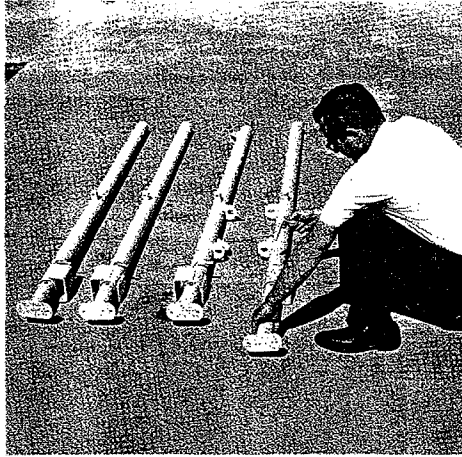
BUNDLE NO.	DESCRIPTION	WEIGHT LBS.	BUNDLE NO.	DESCRIPTION	WEIGHT LBS.
1	Lift Wheel	27	1 ✓ <i>SSN</i>	Lift Wheel	27
5	Yoke	200	6 ✓ <i>SSM</i>	Winch	37
6	Winch	37	7 ✓ <i>SSH</i>	Left Frame	133
7	Left Frame	133	8 ✓	Right Frame	148
8	Right Frame	148	10	Rack	198
9	Rack	178	11 ✓	Yoke	245
28	Front Yoke Arm	41	28	Front Yoke Arm	41
29	Rear Yoke Arm	40	29 ✓	Rear Yoke Arm	40

All bundles are clearly marked with pressure sensitive stickers.

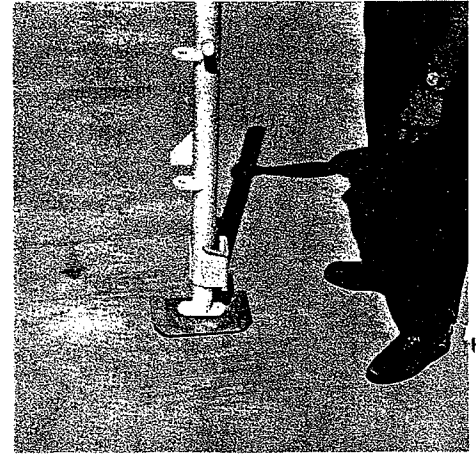
# Assembly Instructions



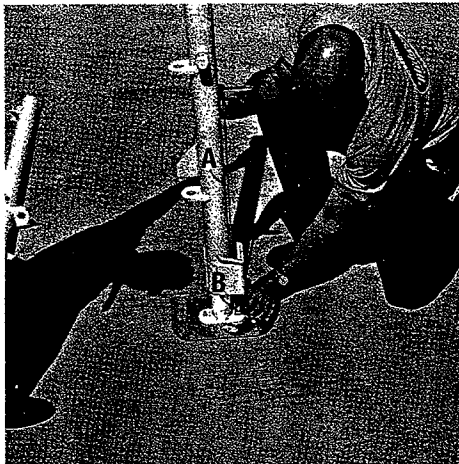
Remove hardware from bundle 9 (2082) or bundle 10 (2098). Sort all nuts, bolts and pins by size.



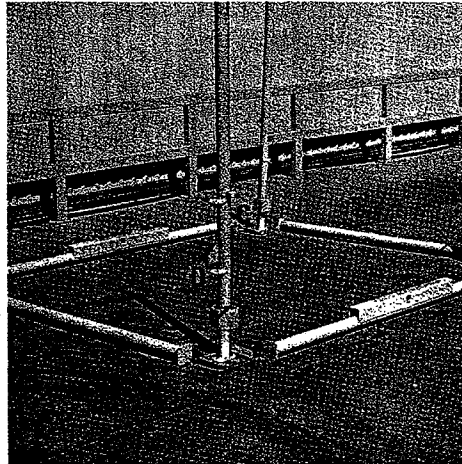
Place adjustable legs in all four corner uprights. Leave one hole exposed and secure with 1/2" pins and hairpins.



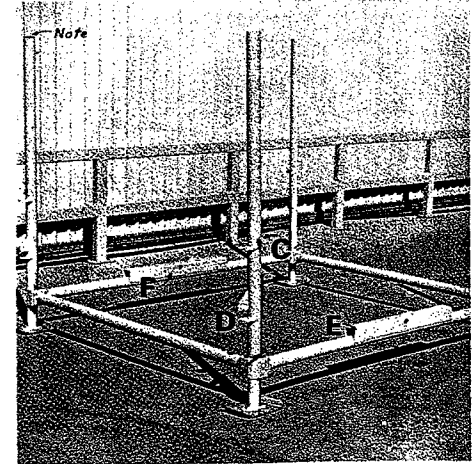
Place 3/8" carriage bolts up through pad and set uprights on bolts.



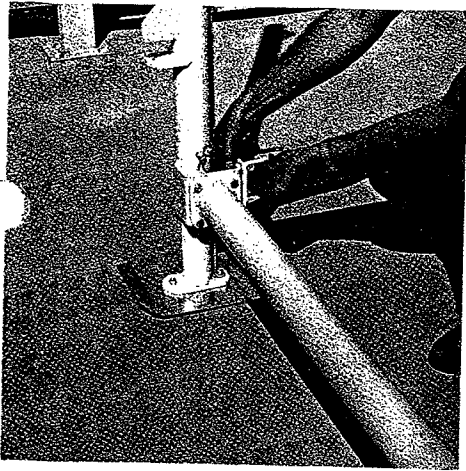
Put leg strap A through corner bracket and over bolt B. Put on nut and tighten. Repeat on all uprights.



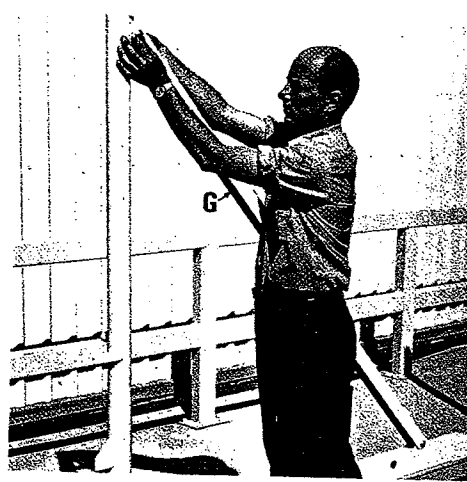
Place guide posts in position with pivot pins C out. Guide posts with transport bracket D must be positioned forward.



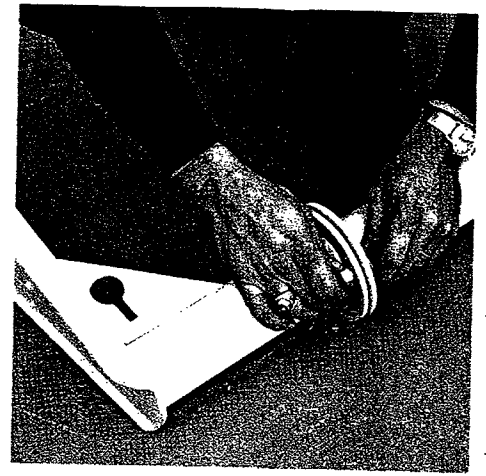
Position lower frame members with channels E up and welded washer to outside post with bracket F placed on winch side. (Note: winch post is open end.)



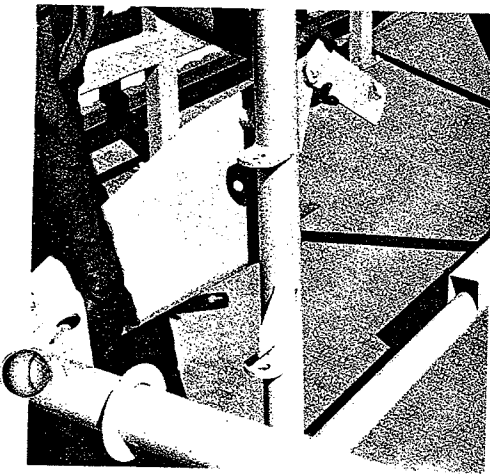
Place all 3/8"x1" bolts in corner brackets and start nuts-do not tighten.



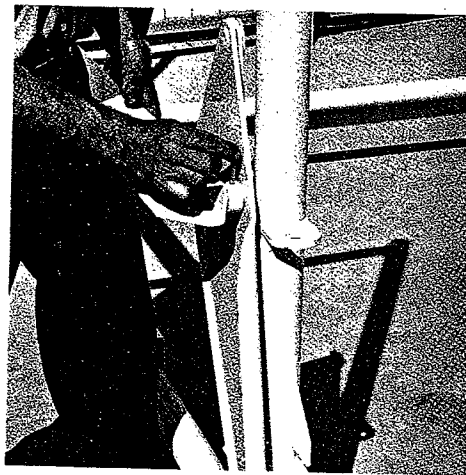
Put post brace G in place and secure with 1/2"x2 1/2" carriage bolts. Do not tighten.



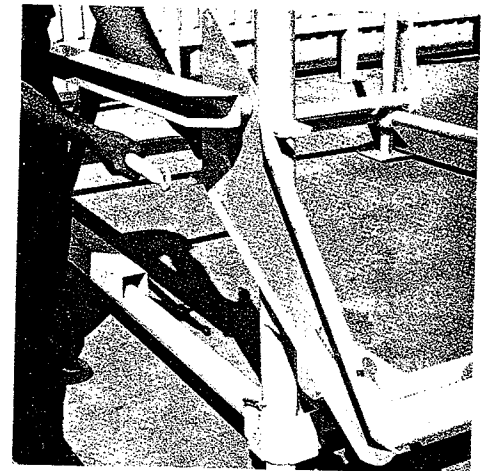
Fasten yoke ends to yoke pipe with 1/2"x1 1/4" carriage bolts. (Note: Head of carriage bolt must be placed toward center.)



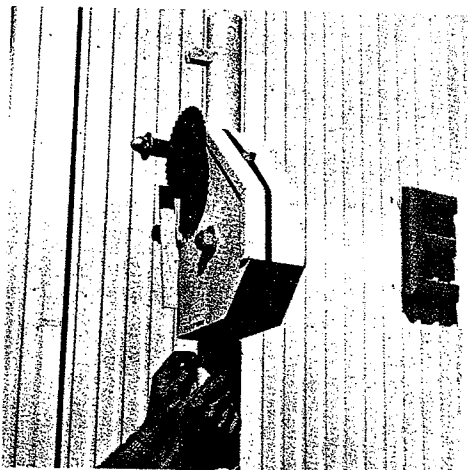
Place rear and front yokes over pivot pins. (Note: Front yoke has transport link.)



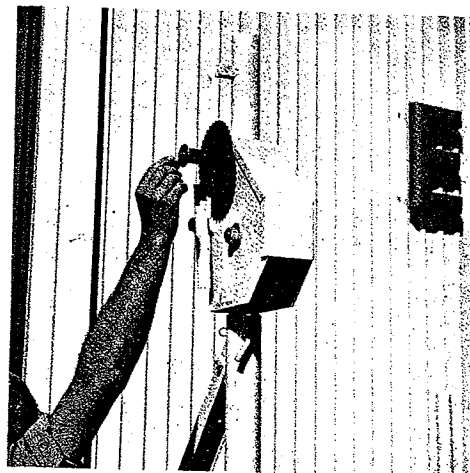
Place stabilizer channel bar over pivot pins (same ones supporting yoke plate) repeat on other side. Drop in cotter pins and spread.



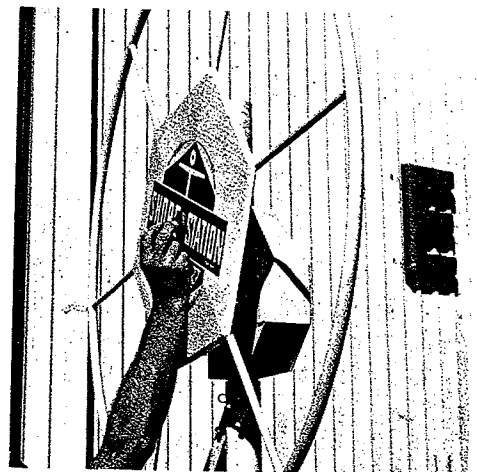
Place tubular lift bar over pivot pins on yoke plate. Put in keys and spread-repeat on other side.



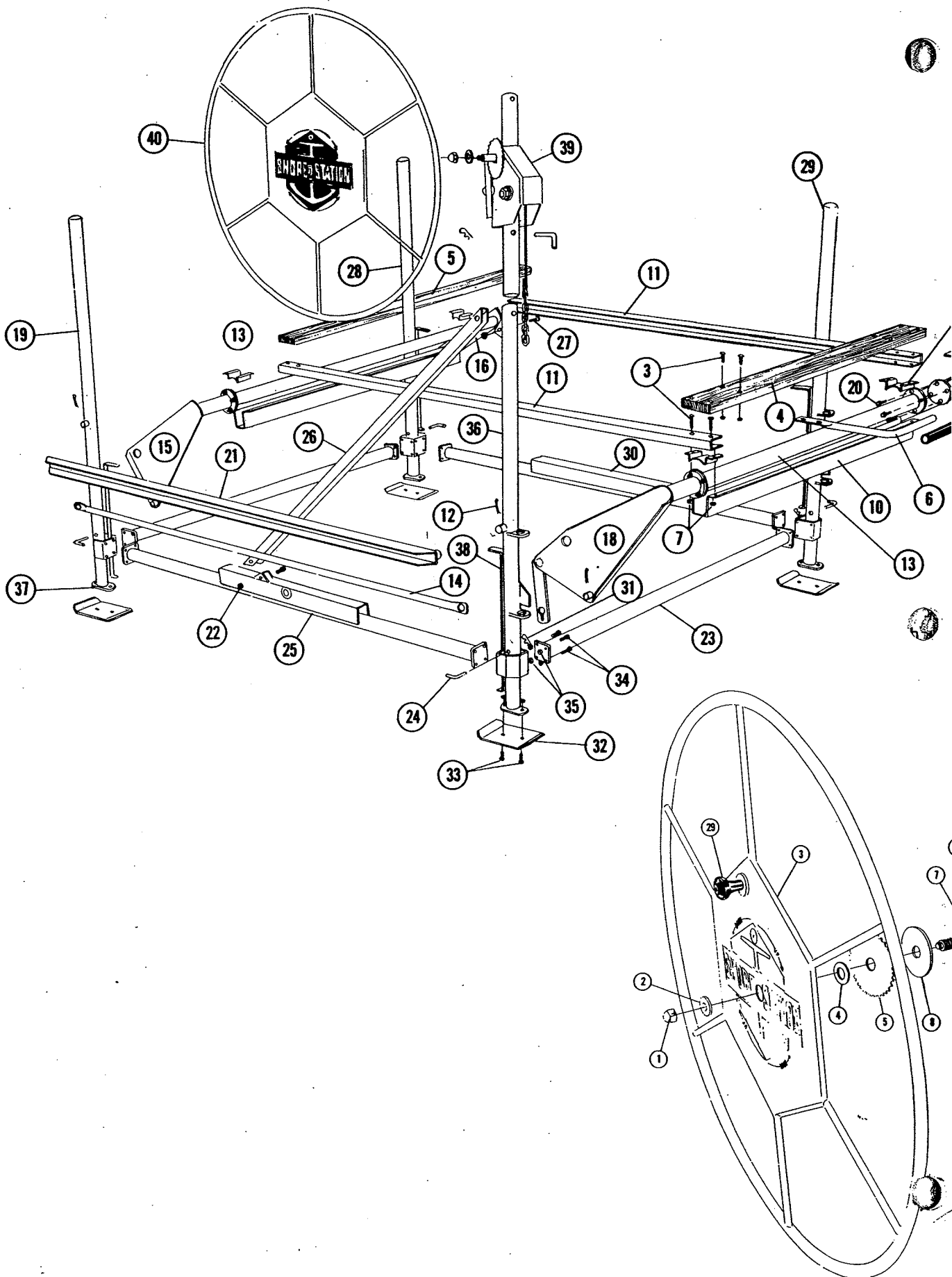
Place winch in winch post. Secure with 1/2" pin and 1/2" hairpin.



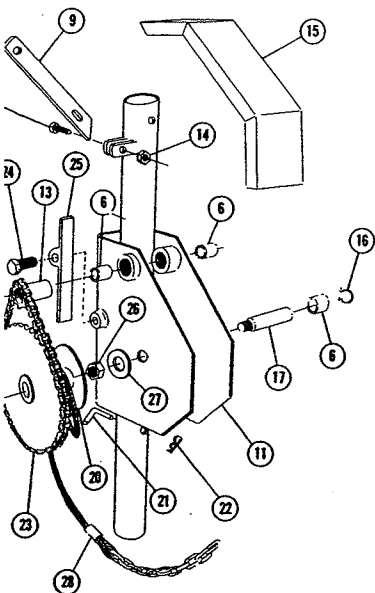
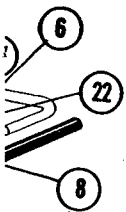
Remove acorn nut and the large washer. Remove pipe spacer and discard. Leave oilite bearing in place and thread wheel clockwise on winch shaft. Replace washer and acorn nut. Tighten - a small space remains between outside of wheel and inside of washer.



# SS-2082 & SS-2098 Component Parts

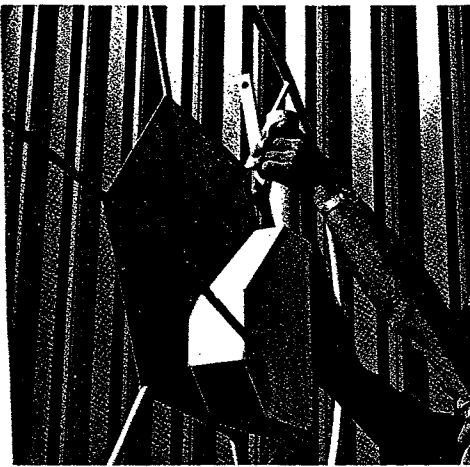


Ref. No.	Part No. 2082	Part No. 2098	Description	Wt.	List Price (Each)	No. Req.
3	SS-B146	SS-B146	5/16" x 3" Carriage Bolt	2 ozs.	.20	12
4	SS-B148		Front Redwood Platform	12 lbs.	6.00	1
		SS-B1481	Front Redwood Platform	15 lbs.	7.15	1
5	SS-B147		Rear Redwood Platform	12 lbs.	6.00	1
		SS-B1471	Rear Redwood Platform	15 lbs.	7.15	1
6	SS-B149	SS-B149	Motor Stop Bracket	4 lbs.	4.40	2
7	SS-B155	SS-B155	5/16" Hex Nuts	1 oz.	.10	12
8	SS-B152	SS-B152	Motor Stop Plastic Cushion	2 lbs.	8.00	1
9	SS-B156	SS-B156	Platform Base	1 lb.	1.10	4
10	SS-B157		Platform Support	24 lbs.	26.40	2
		SS-B1570	Platform Support	26 lbs.	28.60	2
11	SS-B150	SS-B1500	Yoke Spacer	30 lbs.	33.00	2
12	SS-B161	SS-B161	5/16" x 2" Cotter Key	1 oz.	.15	6
13	SS-B197		Center Yoke Pipe	21 lbs.	23.10	2
		SS-B1970	Center Yoke Pipe	30 lbs.	33.00	2
14	SS-B162	<del>SS-B162</del> SS-B158	Lift Bar	12 lbs.	13.20	1
15	SS-B198	SS-B198	Rear Right Yoke Arm	24 lbs.	26.40	1
16	SS-B199	SS-B199	Rear Left Yoke Arm	18 lbs.	19.80	1
17	SS-B199	SS-B199	Front Left Yoke Arm	18 lbs.	19.80	1
18	SS-B200	SS-B200	Front Right Yoke Arm	32 lbs.	35.20	1
19	SS-B194	SS-B194	Rear Right Guide Post	30 lbs.	33.00	1
20	SS-B201	SS-B201	1/2" x 1 1/4" Carriage Bolt	3 ozs.	.20	16
21	SS-B195	SS-B195	Stabilizer Bar	29 lbs.	31.90	1
22	SS-B165	SS-B165	1/2" Hex Lock Nut	1 oz.	.15	18
23	SS-B192		Frame Spacer	26 lbs.	28.60	2
		SS-B1920	Frame Spacer	29 lbs.	31.90	2
24	SS-B188	SS-B188	1/2" Pin	6 ozs.	.25	4
25	SS-B196	SS-B196	Lower Right Frame	48 lbs.	52.80	1
26	SS-B182	SS-B182	Winch Post Brace	5 lbs.	5.50	1
27	SS-B184	SS-B184	1/2" x 2 1/2" Carriage Bolt	3 ozs.	.20	2
28	SS-B178	SS-B178	Rear Left Guide Post	30 lbs.	33.00	1
29	SS-B185	SS-B185	Front Left Guide Post	31 lbs.	34.10	1
30	SS-B186	SS-B186	Lower Left Frame	48 lbs.	52.80	1
31	SS-B187	SS-B187	1/2" Hairpin Cotter Key	1 oz.	.15	4
32	SS-B191	SS-B191	Base Pad	9 lbs.	9.90	4
33	SS-B193	SS-B193	3/8" x 1" Carriage Bolt	2 ozs.	.15	8
34	SS-B176	SS-B176	3/8" x 1" Machine Bolt	2 ozs.	.15	32
35	SS-B177	SS-B177	3/8" Hex Lock Nut	1 oz.	.10	40
36	SS-B183	SS-B183	Winch Post	34 lbs.	37.40	1
37	SS-B189	SS-B189	18" Adjustable Leg	7 lbs.	7.70	4
38	SS-B202	SS-B202	Leg Adjustment Strap	8 ozs.	1.65	4
39	SS-1338	SS-1338	Winch, (complete less wheel)	38 lbs.	49.50	1
40	SS-1120	SS-1120	Operator Wheel	25 lbs.	38.50	1

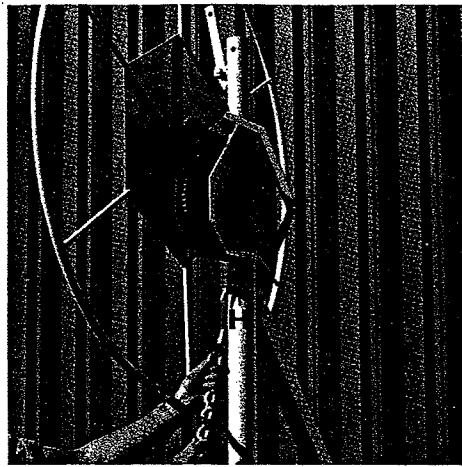


Ref. No.	Part No.	Description	Wt.	List Price (Each)	No. Req.
1	SS-1118	5/8" Cap Nut	2 ozs.	.70	1
2	SS-1119	5/8" Washer	1 oz.	.15	1
3	SS-1120	Lift Wheel	25 lbs.	38.50	1
4	SS-1121	2" Oilite Washer	2 ozs.	.70	1
5	SS-1122	Clutch Sprocket	2 lbs.	2.15	1
6	SS-1123	1" Oilite Bearing	1 oz.	.70	4
7	SS-1124	Drive Shaft	4 lbs.	4.40	1
8	SS-1125	Clutch Plate	2 ozs.	.70	1
9	SS-1126	Locking Handle	1 lb.	1.10	1
10	SS-1127	3/8" x 1 1/2" Machine Bolt	2 ozs.	.15	1
11	SS-1128	Winch Case	28 lbs.	33.00	1
12	SS-1130	3/8" x 1 3/4" pin	2 ozs.	.70	1
13	SS-1131	Drive Sprocket	2 lbs.	2.20	1
14	SS-1132	3/8" Hex Lock Nut	1 oz.	.10	1
15	SS-1133	Winch Cover	2 lbs.	2.20	1
16	SS-1134	1" Snap Ring	1 oz.	.20	1
17	SS-1135	Drum Pivot	1 lb.	1.95	1
18	SS-1136	1/8" x 1" Cotter Key	1 oz.	.10	1
19	SS-1137	Splicer Kit	3 ozs.	1.05	1
20	SS-1142	5/16" Cable Drum	7 lbs.	11.00	1
21	SS-1143	1/2" Pin	6 ozs.	.25	1
22	SS-1141	1/2" Hairpin Cotter Key	1 oz.	.15	1
23	SS-1148	No. 40 Roller Chain	12 ozs.	8.25	1
24	SS-1149	5/8" x 1 1/2" Machine Bolt	3 ozs.	.20	1
25	SS-1150	Clutch Dog	14 ozs.	1.40	1
26	SS-1152	3/4" Hex Nut	2 ozs.	.40	1
27	SS-1154	3/4" Washer	1 oz.	.10	1
28	SS-1145	5/16" Cable	2 lbs.	9.90	1
29	SS-1336	Spinner Complete	13 ozs.	1.50	1

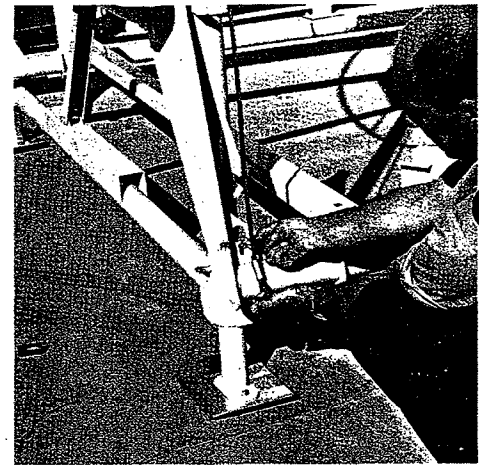
Prices subject to change without notice



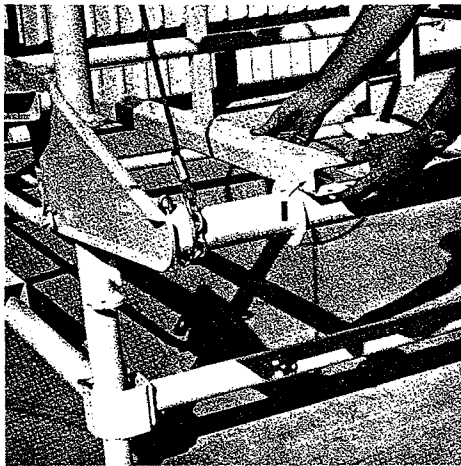
Place lock bar into position as shown and secure with 3/8"x1 1/2" machine bolt and lock nut. Tighten.



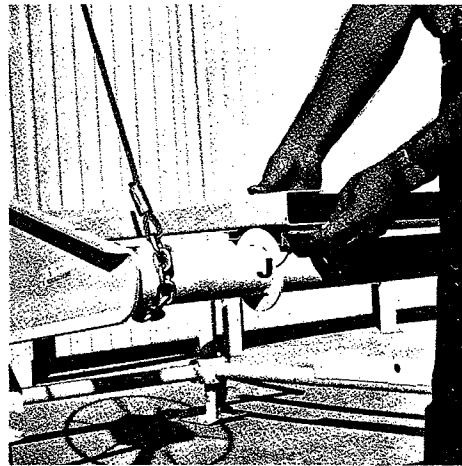
Remove winch cover, cut the wire holding cable. Unwind cable and run down to yoke.



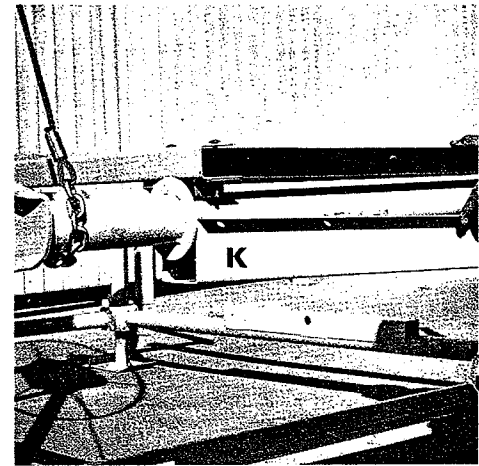
Place cable over the front of the yoke pipe, then underneath pipe. Slip chain links up through and fasten in key hole notch in yoke arm brace.



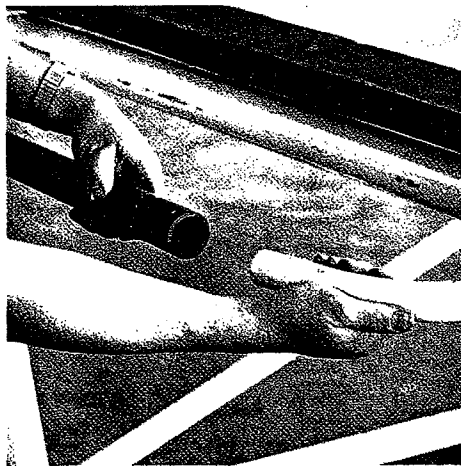
Lay channels I on yokes with open side to inside and against splicing collar on yoke tubes.



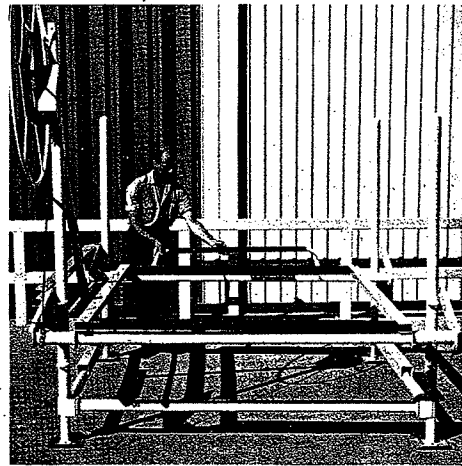
Slip redwood into channel, match holes and drop in 5/16"x3" carriage bolts-leave nuts off. Place pivot bracket J on yoke pipe on all corners.



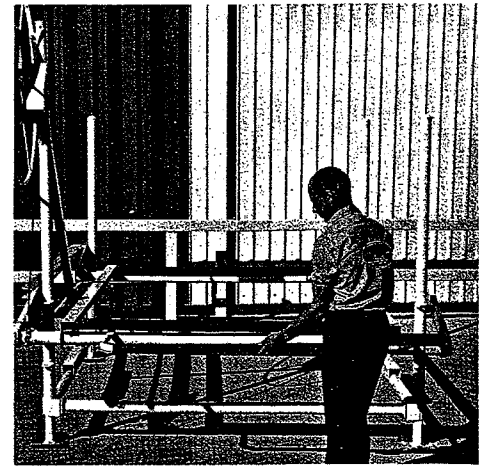
Place channel platform support K into place. Tighten all platform bolts.



Slip motor stop brackets into ends of plastic motor stop cushion. Then slip motor stop brackets between redwood platform and channel platform and channel platform support. Match holes and drop in 5/16"x3" carriage bolts.



Right Side Installation

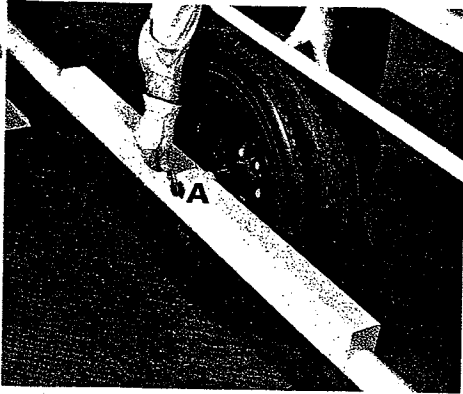


Left Side Installation

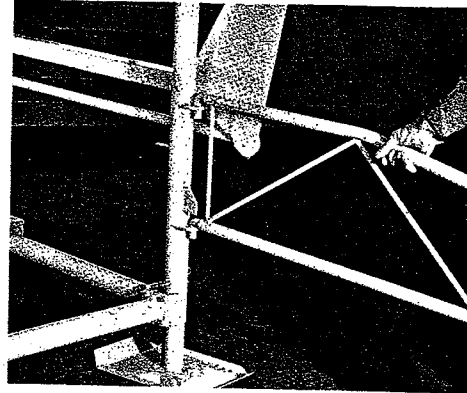
Determine where hoist will be located and install motor stop on the desired end of hoist.

# INSTALLATION

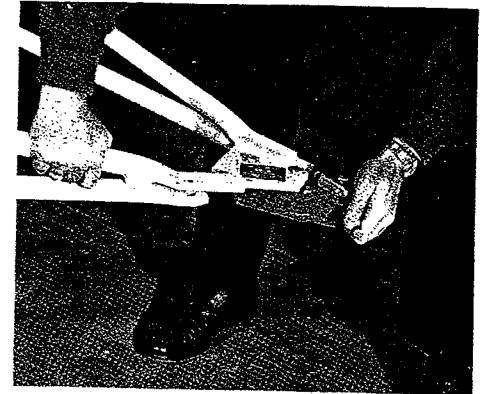
## Attaching Optional Trail Unit



Raise unit and place spindle in hole A and hairpin. Repeat on other side.



Attach right and left tongue as shown above.

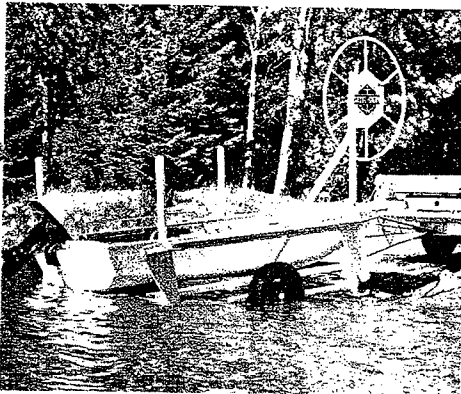


Place right and left tongue together and drop in 1/2" pin and hairpin.

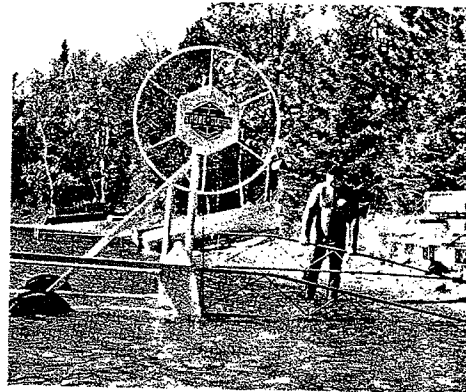
**YOU ARE NOW READY FOR LOW SPEED LAND TRANSPORTING OF YOUR SHORE STATION TO WATER ACCESS OF YOUR CHOICE SUCH AS PUBLIC RAMP.**

**NOTE: FOR WATER TRANSPORT USE METHOD 1 OR 2 AS ILLUSTRATED.**

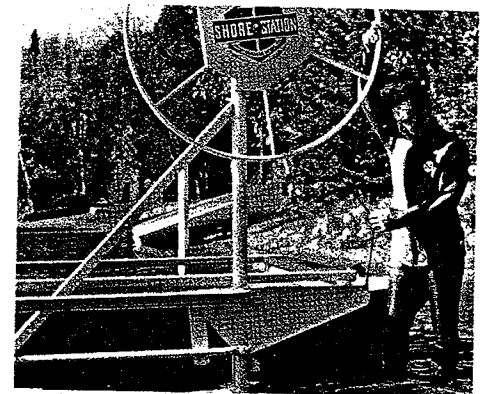
**1. HOW TO MOVE YOUR SHORE STATION IN WATER WITH A FISHING BOAT OR OTHER FLOATING MATERIAL SUCH AS STYRAFOAM.**



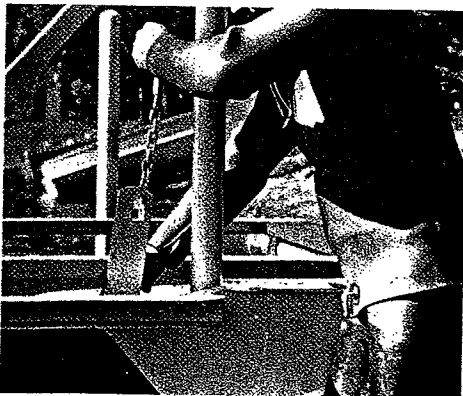
Back hoist into approximately 24" of water.



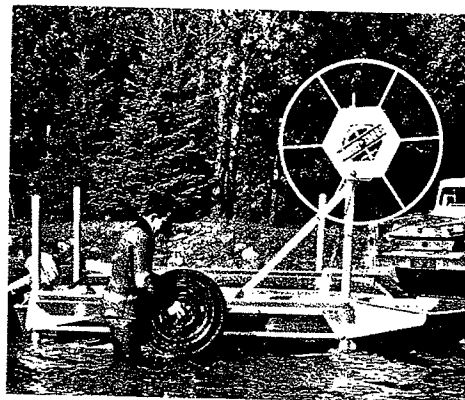
Remove tongues and raise platform



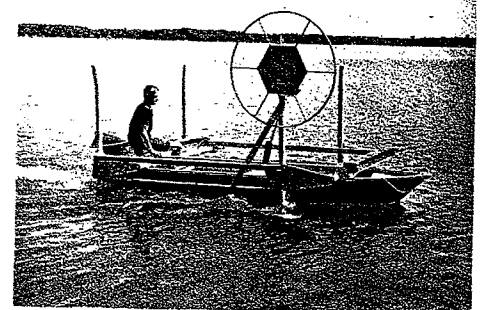
Float fishing boat under raised platform. (Styrafoam or other floating material may be used instead of boat.)



Lower platform unto boat—boat being slightly forward and toward winch side for balance. Unhook chain from yoke and hood to transport link.



Turn winch up raising hoist against bottom of boat. (Caution: do not raise to high—will crush boat.) Remove wheels.

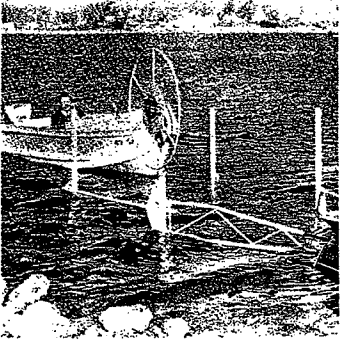


Lock wheel back to prevent accidental lowering while transporting. (Caution: transport at low power setting.)

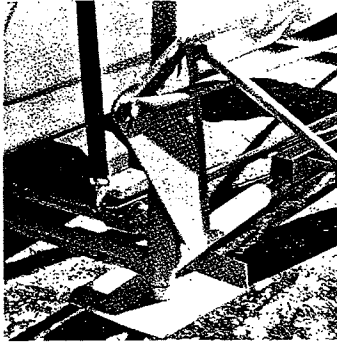
**IMPORTANT: AVOID HIGH POWER SETTINGS AND ABRUPT TURNS WHILE TRANSPORTING. TIE TOW HOOK TO HOIST NOT BOAT**

## TRANSPORT BOAT AND HOIST TO DOCK SITE.

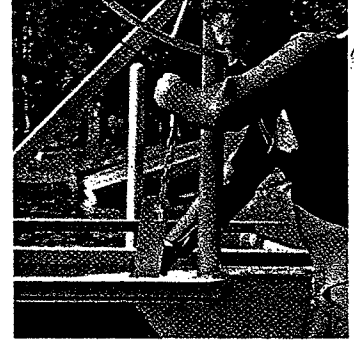
### 2. HOW TO MOVE YOUR SHORE STATION IN WATER WITH AN OUTBOARD, SAILBOAT, PONTOON BOAT (ANY BOAT WITH OBSTRUCTIONS PREVENTING USE OF METHOD NO.1.)



Back hoist into approximately 24" of water. Drive boat on hoist. Remove tongue.



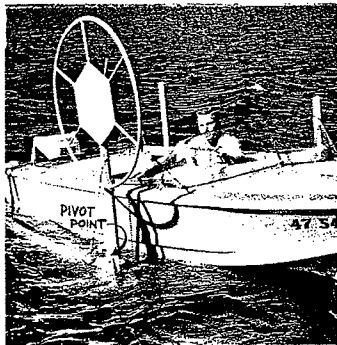
Raise until boat is out of water and strap boat to platform frame. (Caution: straps must be tight and boat must be toward winch side for balance.



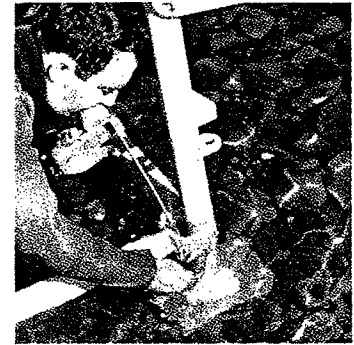
Lower boat until it floats and chain is loose. Unhook chain from yoke and hook into the transport link. Tighten winch until hoist is floating. (Caution: do not tighten too tight.



Remove wheels. Check hoist for balance and be sure straps are secured. Put wheel lock down to prevent lowering while in transport.



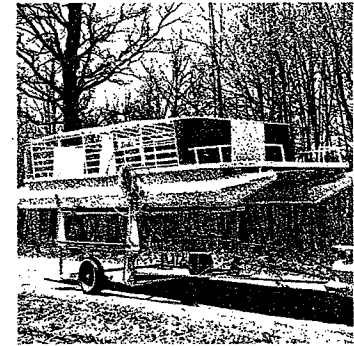
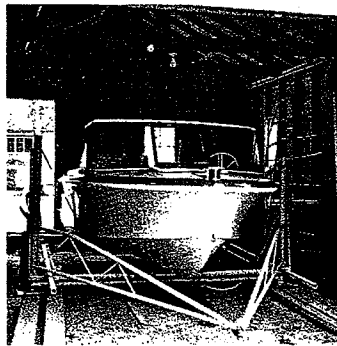
Transport at low power setting to dock site. Note: Proper water line should be at pivot point as shown. At dock site lower to pivot point before adjusting legs with leg straps.



Lower adjustable legs with straps to level hoist. Note: If water is deeper than 4 ft. you must use special extra long adjustable leg SSK for up to 5 1/2 ft. water depth.

**LOWER WINCH AND UNHOOK CHAIN FROM TRANSPORT LINK. BRING CHAIN AROUND THE FRONT OF YOKE AND THREAD BACK UP THROUGH KEY HOLE SLOT. HOOK CHAIN. HOIST IS NOW READY TO OPERATE.**

**TO REMOVE YOUR SHORE STATION FOLLOW REVERSE PROCEDURE AS OUTLINED FOR INSTALLATION. YOUR BOAT AND HOIST MAY BE TOWED TO STORAGE SITE AND STORED AS ONE UNIT EITHER INSIDE OR OUT. SEE EXAMPLES.**



**TRANSPORTING LONG BOATS SUCH AS PONTOON OR SAIL BOATS  
RAISE PLATFORM AS SHOWN. SEE RIGHT PHOTO.**

#### MAINTENANCE:

Shore-Stations are practically maintenance free, however to increase life and ease of operation we recommend that a few drops of oil be placed on the winch roller chain, remove hand wheel and place a small amount of grease on acme threaded shaft each fall when removing for storage.