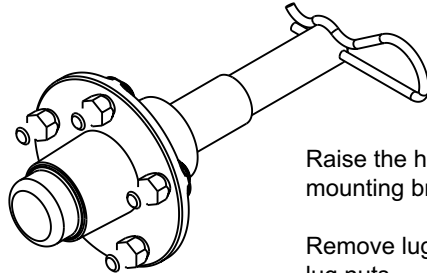


SS#50 SSA Spindle & Hub Assembly

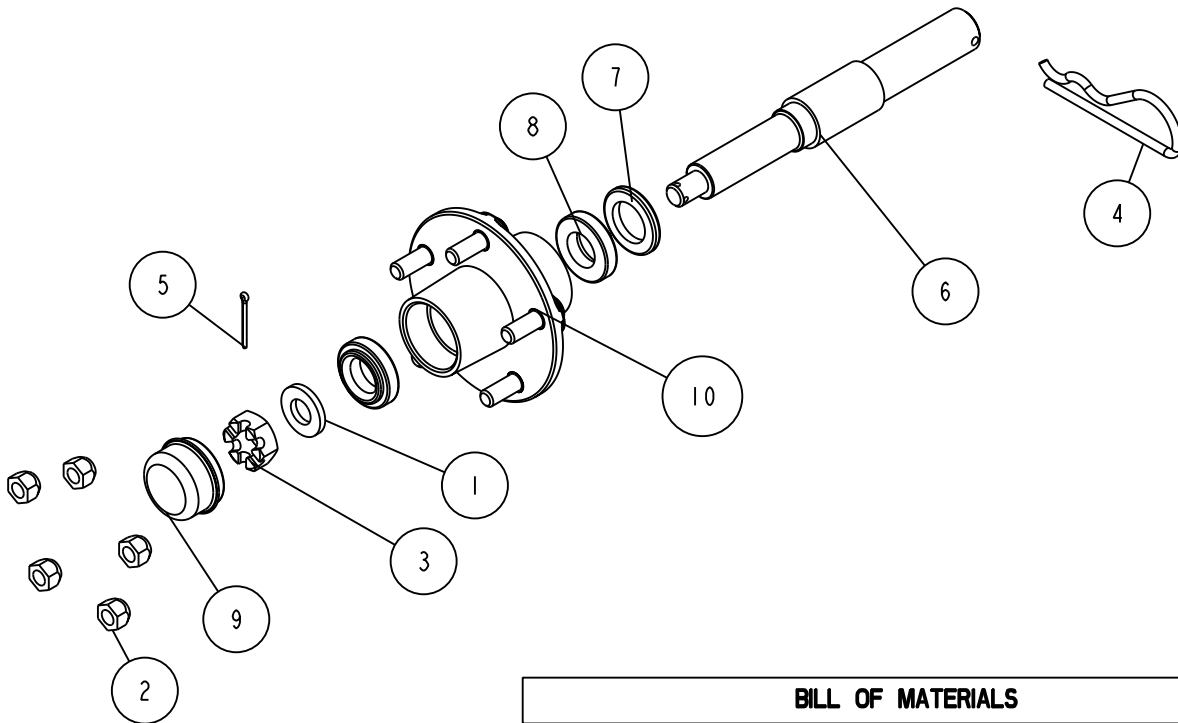


Raise the hoist up. Place the spindle into the spindle mounting brackets on the SS#230A. Insert the 1/4" hair pin.

Remove lug nuts. Mount rim and tire assembly. Secure with lug nuts.

Repeat on other side of hoist.

Lower the hoist. The hoist is ready for travel.

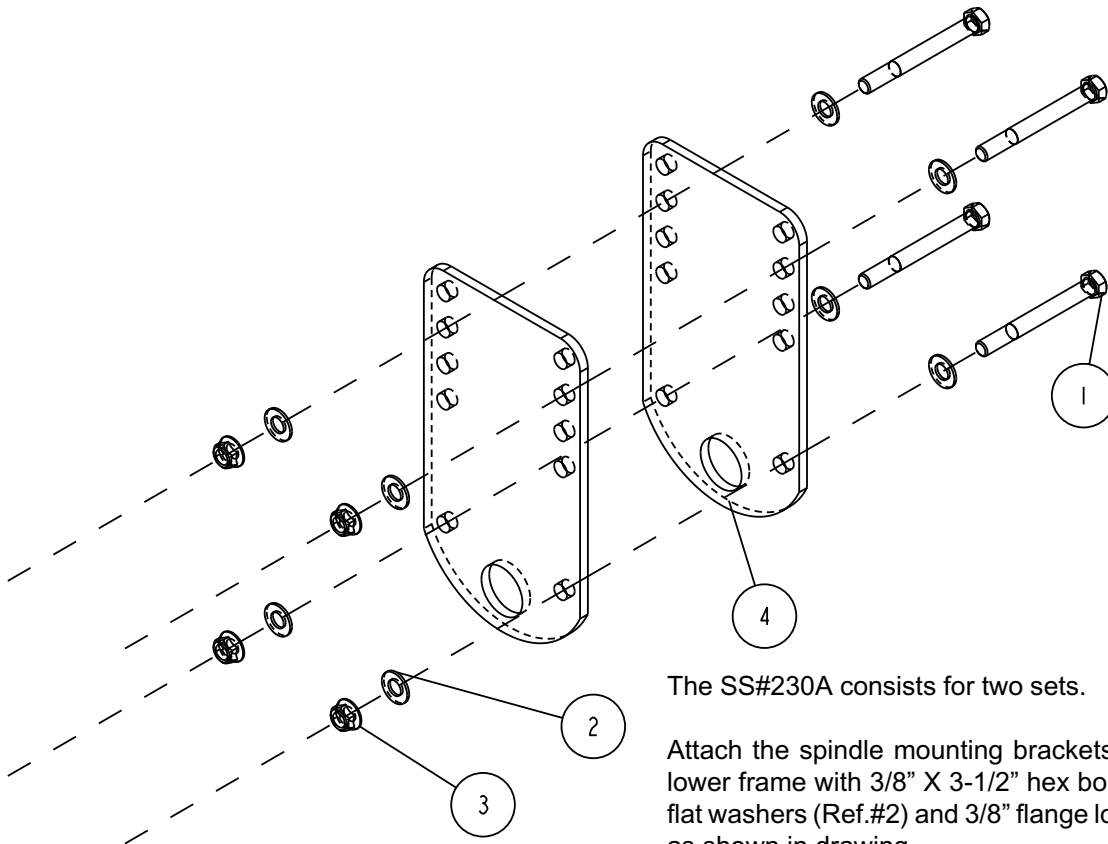


BILL OF MATERIALS

ITEM	PART #	DESCRIPTION	QTY
1	1340206	WASHER 1.5 OD X .765 ID X .186/.206	1
2	1410230	HEX LUGNUT 1/2-20 3/4 OD Z&U	5
3	1440349	HEX NUT SLOTTED PLAIN	1
4	1510330	HAIRPIN COTTER #9 ZP	1
5	1540038	COTTER KEY 1/8 X 1 1/2 ULTRASEAL	1
6	4410062	SPINDLE 1 1/2IN X 11 1/4IN SSA	1
7	4410120	SEAL 1 1/16IN	1
8	4440160	ROLLER BEARING 1 1/16IN	2
9	4440235	DUST CAP A 3/8 X 1 1/16	1
10	4470337	HUB 1 1/16 X 1 1/16 CAST	1

SS#230A

Attaching Bracket for SSAA Spindles



The SS#230A consists for two sets.

Attach the spindle mounting brackets (Ref.#4) to the lower frame with 3/8" X 3-1/2" hex bolts (Ref.#1), 3/8" flat washers (Ref.#2) and 3/8" flange lock nuts (Ref.#3) as shown in drawing.

Repeat on the other end of hoist.

Note: When attaching the spindle mounting brackets, measure approximately 36" from the guide post opposite the winch end. Measure 48" from the guide post on lower frame on models 6,000 lbs. and above.

BILL OF MATERIALS			
ITEM	PART #	DESCRIPTION	QTY
1	0110058	HH 3/8-16 X 3 1/2 CS GR5	4
2	1340095	WASHER USS FLAT 3/8	8
3	1440101	FLANGE LOCKNUT SMALL 3/8-16	4
4	A153	SPINDLE MOUNTING BRKT - ALUM	2

DWG: SS230A_MANUAL	REV: .
--------------------	--------