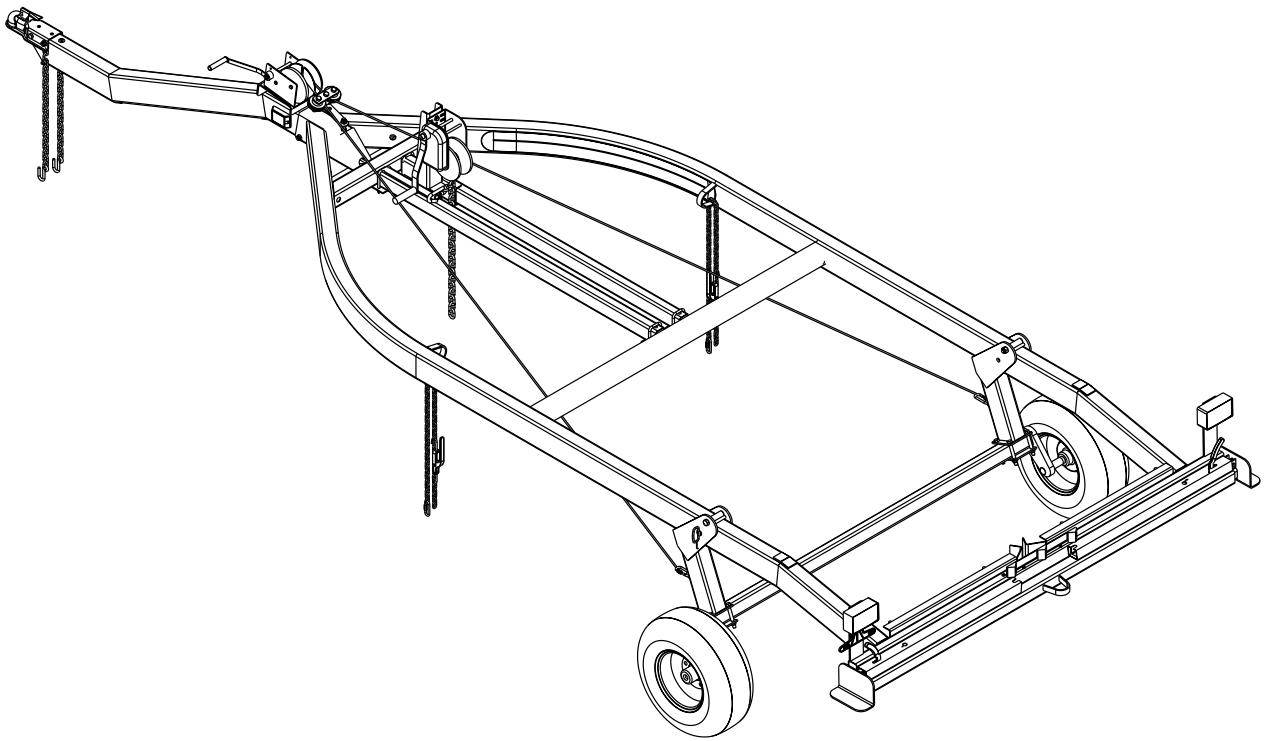


SSBK1250 ShoreStation Hoist Trailer



ITEM	PART #	DESCRIPTION	QTY	NOTE
1	65135	CAM LEVER ASSY	2	
2	67852	WINCH SUPPORT TUBE HOIST TRAILER	2	
3	67870	AXLE PLATE HOIST TRAILER	2	
4	67875	ALUM EXT CHANNEL	2	
5	67879	LOAD GUIDE CLAMP	1	
6	67880	RAMP HOIST TRAILER	2	
7	67881	FRAME WMENT HOIST TRAILER	1	
8	67882	TONGUE WMENT	1	
9	67883	WINCH POST HOIST TRAILER	1	
10	67884	AXLE PIVOT POST HOIST TRAILER	2	
11	67885	HOIST SUPPORTS HOIST TRAILER	2	
12	67886	PULLY WMENT HOIST TRAILER	1	
13	0110037	HH 3/8-16 X 1 1/4 CS GR5	2	
14	0110049	3/8 DIA BOLT (GALVANIZED)	2	
15	0110096	HH 1/2-20 X 1-1/2	1	
16	0110107	HH 1/2-13 X 3 CS GR5	3	
17	0110114	HH 1/2-13 X 4 CS GR5	10	
18	0120195	HH 5/8-18 X 4 1/2 CS GR5	2	
19	0140040	HH 3/8-16 X 1 CS GR5	5	
20	0140090	HH 1/2-13 X 1 CS GR5	2	
21	0210032	CARR 1/4-20 X 3/4 GR5	3	
22	0310103	SUB 3/8 X 2 7/16 X 4	4	
23	0810925	SCREW SELFDRIILL HWH #10-16 X 3/4	7	
24	1310004	LOCKWASHER 1/4 INTERNAL TOOTH	2	
25	1310170	WASHER#10 USS FLAT	2	
26	1340095	WASHER USS FLAT 3/8	10	
27	1340100	WASHER USS FLAT 1/2	1	
28	1410049	HEX NUT FINISH 1/4-20	2	
29	1410209	HEX LOCKNUT 1/2-20	1	
30	1440101	FLANGE LOCKNUT SMALL 3/8-16	19	

31	1440102	FLANGE LOCKNUT SMALL 1/2-13	17	
32	1440279	HEX LOCKNUT 5/8-11 GRADE B	2	
33	1920013	QUICK LINK 1/4(7MM) PLATED	2	
34	2121223	SPRING DOCK CAM LEVER	2	
35	2210171	CHAIN QUICK LINK W/5/16 OPENING	2	
36	2210300	CHAIN SAFETY 1/4(7MM)X 20LK W/LA	2	
37	2210304	LOAD BINDER MITIE	2	
38	2210305	CHAIN 4/0 STRAIGHT COIL X 70 LIN	2	
39	3110208	WINCH B1500 BRAKE WINCH	1	
40	3110302	WINCH HANDLE 9 1/2IN B1200	1	
41	3110334	1/2 X5 HITCH PIN W/LYNCH	1	
42	3110377	DBL2000 WINCH SPLIT DRUM W/HANDLE	1	
43	3110379	CABLE WITH CHAIN AND HOOK	1	
44	3310010	COUPLER #980 P2 ASSEMBLED	1	
45	3510022	GROMMET 7/16IN MOLDED	2	
46	3510030	GROMMET 7/8IN MOLDED	5	
47	3510037	AXLE HOIST TRAILER	1	
48	3510083	PULLEY WITH BRASS BUSHING 2 7/8	2	
49	3510570	LATCH HANDLE PLASTIC COVER - DOC	2	
50	4300181	20.5 X 8 X 10-D TIRE/MSILVER RIM	2	
51	5110045	3 LIGHT CLUSTER 1994 LEXAN	1	
52	5110348	BO LICENSE PLATE BRACKET	1	
-	5110354	HARNES FRAME 2X4 LEFT 17FT 21	1	
-	5110355	HARNES FRAME 2X4 RIGHT 17FT 2	1	
53	5110377	TAILLIGHT RIGHT DRYLAUNCH	1	
54	5110378	TAILLIGHT LEFT DRYLAUNCH	1	
-	5110426	HARNES TONGUE 9FT 2FT SHEATH	1	
55	5110456	LIGHT AMBER SIDE MARKER 36IN WI	2	
56	PRT0001	CABLE 1/4" X 304 W/LOOPS GALV	1	
57	S-3510	TONGUE COVER PLATE	1	

SSBK1250 Assembly Instructions

Safety Chains:

Insert a 3/8" X 1-1/4" hex bolt with a 3/8" flat washer and safety chain through the lower hole on the front of the tongue. Secure with a 3/8" flat washer and 3/8" flange lock nut. Repeat the procedure on the opposite side of the tongue.

Coupler:

Mount the coupler onto the tongue with one (1) 1/2" X 4" hex bolt into the rear of the coupler and tongue. Using two (2) 1/2" X 1" hex bolts insert in to the two (2) front holes through the coupler and tongue. Secure with 1/2" flange lock nuts.

Tongue:

Slide the tongue assembly into the tongue frame cap. Secure the tongue with a 1/2" X 4" hex bolt in the side of the tongue and the tongue channel.

Wire Harness:

Install the tongue wiring and harness through the top forward wire hole and exit the rear of the tongue tube. Install grommets and plug the tongue wire into the frame harness by color.

Tongue Cover:

Pull the wiring through the tongue cover. Place the tongue cover over the rear of the tongue and the tongue frame cap and secure with a 1/2" X 1-1/2" hex bolt, 1/2" flat washer and 1/2" hex lock nut.

Winch:

Mount the winch assembly to the tongue plate weldment using three (3) 3/8" X 1" hex bolts, 3/8" flat washers and 3/8" flange lock nuts.

Cables:

Find the center of the continuous cable and mark. Insert the cable at the mark into the center split on the drum of the winch. Turn winch handle to start the cable around the winch drum.

Brake Winch Assembly:

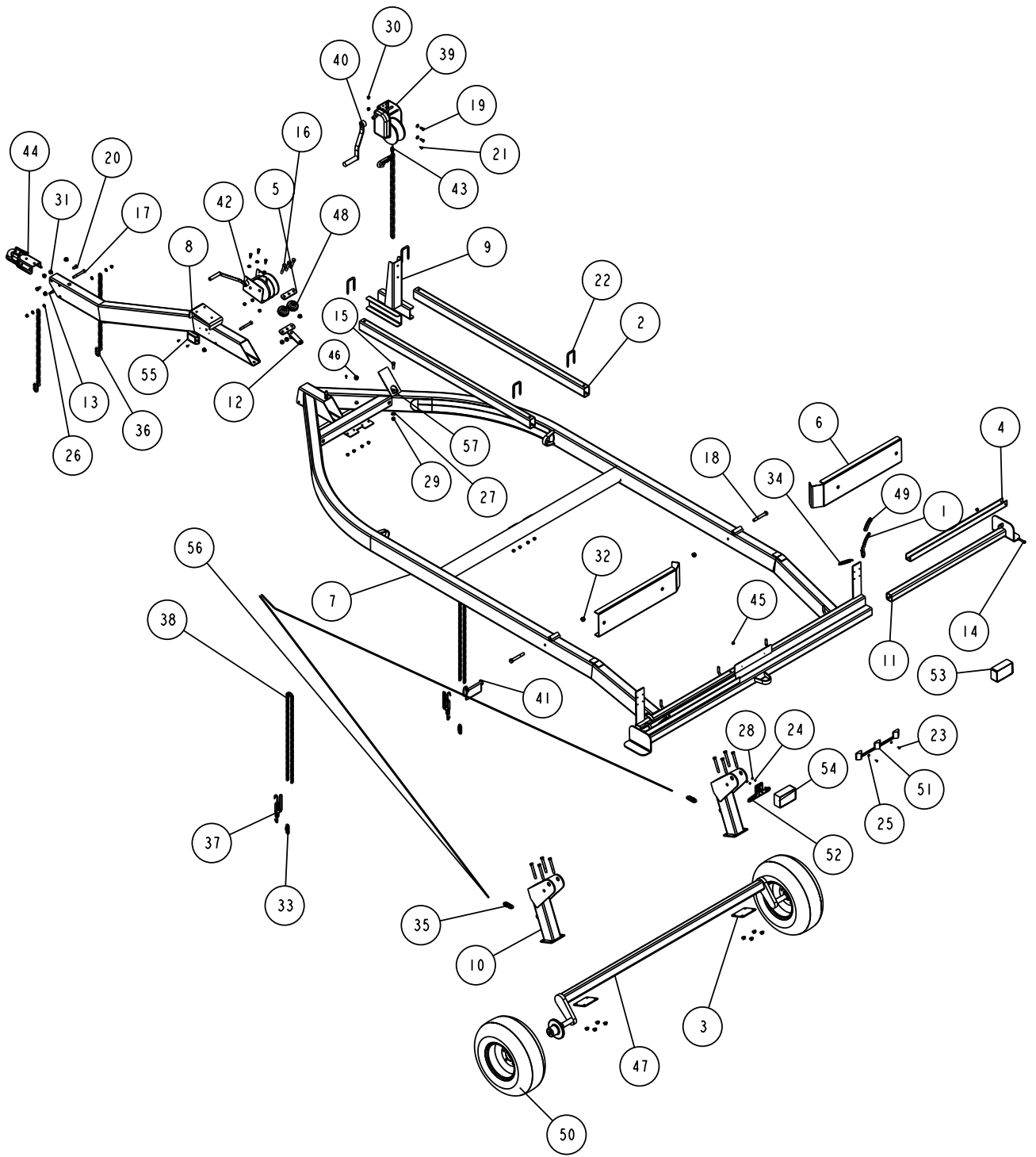
The brake winch assembly is partially assembled with one (1) winch support tube already in mounted into position. Slide the other winch support tube into position on the opposite side of the winch post. Secure this assembly the SSBK1250 trailer frame at the middle and front crossmember locations using four (4) 3/8" X 2-7/16" X 4" square u-bolts. Tighten using 3/8" flange lock nuts.

Load Binder Chains:

Run the end of the chain closest to the chain binder (about 17 links in) through the welded loop on the inside of the side frame and connect with a quick link. Repeat on opposite side of the trailer.

Axle:

Cut the banding holding the axle assembly to the frame. This allows the axle assembly to drop into a down position.



DWG: SSBK1250	REV: 1.9+
---------------	-----------

SSBK1250 Operating Instructions

OPERATING INSTRUCTIONS

1. Check local D.O.T. regulations to ensure that loaded trailer will not exceed height and width limitations.
2. Raise hoist platform to highest position.
3. Back trailer up to hoist centered with wheels approx. 36" from hoist. Remove ramps from trailer and hook over hoist frame, aligned with wheels.
4. Back trailer over ramps into hoist frame, stopping approx. 18" from back of hoist. Return ramps to trailer frame.
5. Lower trailer frame with wheel assembly winch until support arms slide under hoist's lower side frame.
6. With trailer centered, slide left and right support arms out until tight against hoist frame. Note that support arms slide out freely but cannot be retracted until locking lever is released.
7. Hook front winch cable chain around hoist's front cross frame. Position winch directly above lower frame and raise hoist until it is against bottom of trailer frame. If not possible reposition trailer. Do not over crank.
8. Raise back of hoist with wheel assembly winch to fully upright, transport position. Do not over crank. Secure chassis with locking pins.
9. Secure tie downs around hoist side frames and thru tie down points on inside front corner of trailer frame to keep hoist from shifting during transport.
10. Hoist is now ready for transport.

To remove hoist from trailer, reverse the above processes.

Read owners manual before using.

4811463

Actual Decal - located on the tongue of the SSBK1250.