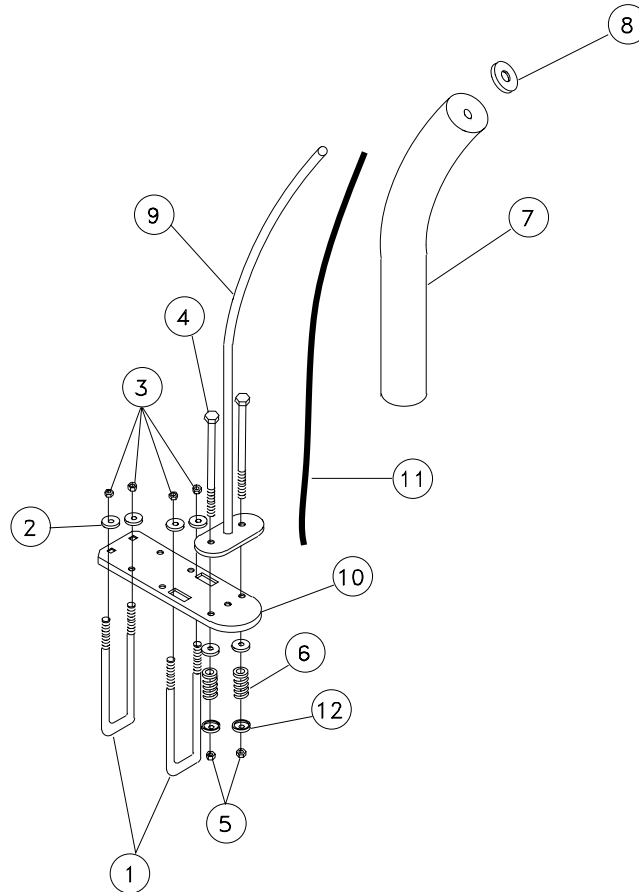


SSNAV Aluminum Centering Device



REF#	PART#	DESCRIPTION	QTY
1	0310109	3/8" X 2-7/16" X 6-1/2" SQ U-BOLT	8
2	1340095	3/8" USS FLAT WASHER	16
3	1410101	3/8" FLANGE LOCK NUT	16
4	0210135	3/8" X 4-1/2" CARRIAGE BOLT	8
5	1410109	3/8" HEX NUT	8
6	2110501	COMPRESSION SPRING	8
7	3510005	4" POLYETHANLENE LOG - 27" LONG	4
8	3510012	2" OD X 3/8" ID X 3/16" WASHER	4
9	A148	RIGHT SSN STEM	2
--	A149	LEFT SSN STEM	2
10	A150	5/16" X 4" ALUMINUM BAR SSN MTG .	4
11	SS1121	POLY ROPE - 4'	4
12	B1325	GALVANIZED CUP WASHER	16

SSNAV Assembly Instructions

Fasten one (1) SSNAV mounting clamp in position as shown in the drawing with two (2) 3/8" u-bolts from the bottom up through the 4" aluminum mounting bar. Secure with 3/8" flat washers and 3/8" flange lock nuts. Position the unit on the platform and tighten all fasteners.

IMPORTANT: Place the centering device so that the top of the stem points out the open end of the hoist and will stay clear of the guide post brace and winch tubes when raising and lowering the platform.