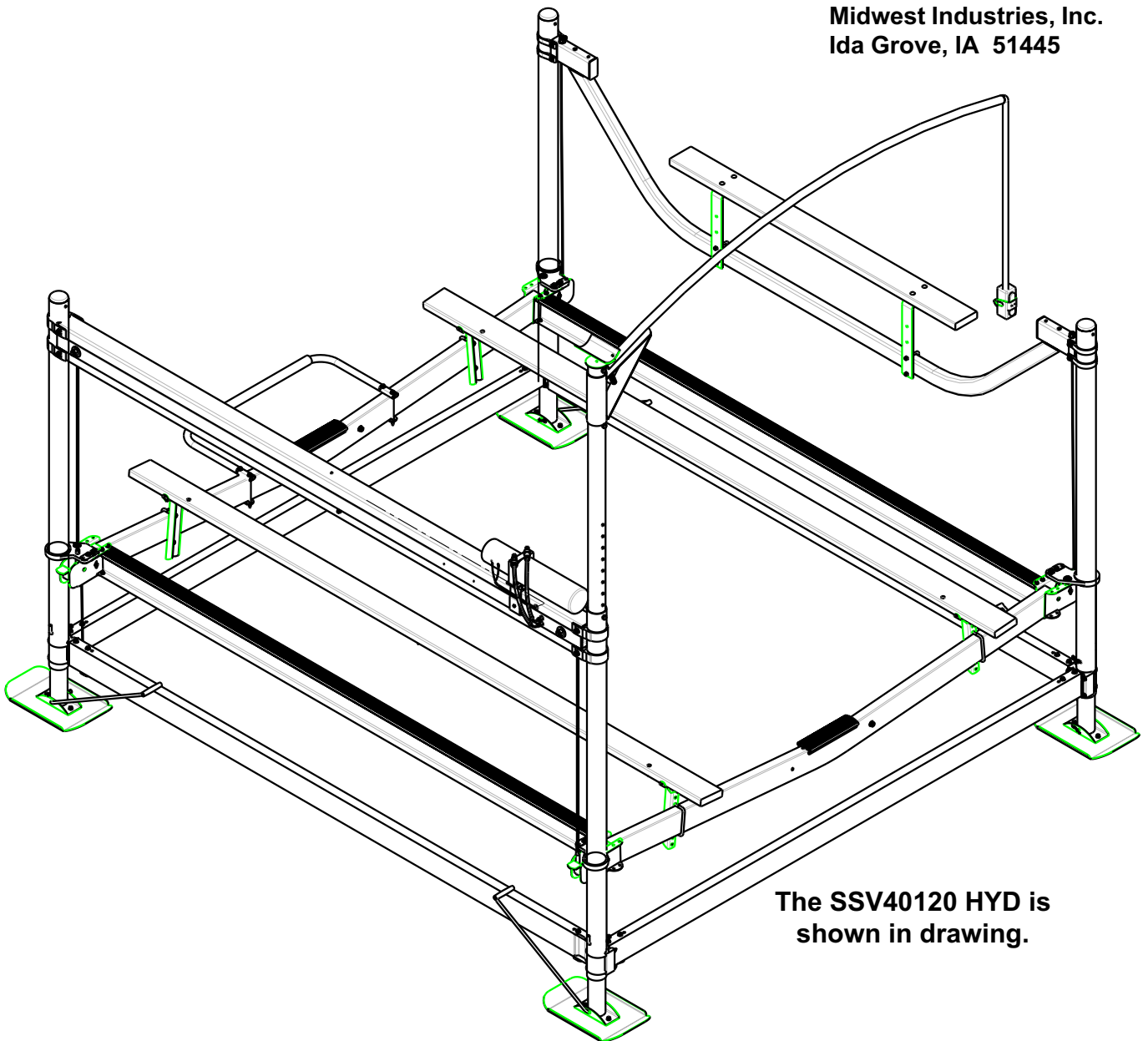


SSV40120 HYD & SSV40120 HYD AL ShoreStation Aluminum V-Frame Hydraulic Hoist Parts Manual

Your **ShoreStation** Hydraulic Boat Hoist is designed to give years of dependable service. Following the instructions in the service manual will insure its dependability and more important, **YOUR** safety. Read through this entire service manual before attempting to operate your hoist. Our goal is your safety - help us help you by knowing and observing the operating precautions and limitations you will find listed herein. If you do not understand any of these instructions, please ask your dealer for his personal attention to your questions.

Midwest Industries, Inc.
Ida Grove, IA 51445



The SSV40120 HYD is
shown in drawing.

SSV40120 HYD Bundles

66659	Drop Side Bundle HYD V40120
62512	Bunk Bundle
66663	Platform Bundle HYD 40120
66660	Winch Tube Bundle HYD 40120
66608	Hydraulic Pump Assy HYD Hoist
SS1204	Control Arm Assy
66661	Leg Bundle SSV60120 HYD
66664	Hdwe Box V40120 HYD
66662	Lower Frame Bundle V40120 HYD

Tools Required for Assembly

- 9/16" Socket / Wrench
- 3/4" Socket / Wrench
- 5/16" Socket / Wrench
- 7/16" Socket / Wrench
- Wire Threader

SAFETY PRECAUTIONS

DO NOT OPERATE THIS HOIST WITHOUT FIRST STUDYING THIS SERVICE MANUAL

1. See to it that you, your family, and anyone else who uses the hoist looks upon the unit not as a toy, but a piece of heavy equipment that deserves your respect and good judgment.
2. Before allowing anyone to operate the unit, be sure they fully understand the proper operating procedure.
3. Do not exceed maximum capacity of unit, overloading may cause mechanical failure and serious personal injury.
4. All persons should stand clear and should not be allowed to board your watercraft when it is being raised or lowered.
5. If you choose to remove the pump cover and inspect or work on the pump, be sure the platform is completely lowered.
6. It is a good safety policy to restrict children, as well as adults, from playing on or near the hoist.
7. Service pump annually. **IMPORTANT:** A pump maintenance schedule must be followed to avoid possible failure and injury.
8. Check cable for wear or fraying and also stress on cable attaching ends. If this occurs, replace cable immediately.
9. Be sure the hoist is installed level, severe out of level installation may cause hoist hang up and serious personal injury.
10. Do not work on your watercraft or hoist with watercraft on the hoist.
11. Check all sheaves, make sure they are turning and operating properly.
12. Check fasteners on cable ends to be positive they are threaded properly (see setting up instructions).
13. If the platform begins to fall down for any reason, at no time should you attempt to prevent it from doing so. Such action could result in injury to arms and hands. Instead, simply let the platform fall down into the water. Doing so will neither damage your watercraft or hoist.
14. Never pick up on platform of hoist while trying to move, position, or transport hoist. Doing so may cause serious personal injury.
15. Never stand or walk on hoist platform while in any raised position. Doing so may cause serious personal injury.

SAFETY MAINTENANCE

It is recommended that your ShoreStation hoist be thoroughly inspected at least once each season:

1. Tighten all bolts.
2. Check pulleys and make sure they are all turning freely.
3. Inspect all cables for fraying, wearing or deteriorating. If any signs appear, replace cables.
4. Check frame thoroughly.
5. Check pump as per manufacturer's specifications listed on the pump.

SSV40120 HYD Lower Frame Assembly Instructions

Assemble the base pad clamps (Ref.#2) to the base pads (Ref.#1) with 3/8" X 3/4" carriage bolts (Ref.#5) and 3/8" flange lock nuts (Ref.#6) on all four (4) pads. Tighten.

Place the black grips (Ref.#7) on the four (4) lift rods. The black grips are to be placed on the end of the lift rod that does not have the hitch pin clip hole.

Mount the base pads to the adjustable legs (Ref.#12) with the leg lift rods (Ref.#14) in the one (1) of the adjustment height holes and secure with the hitch pin clips (Ref.#11). **NOTE:** The leg lift rods must clear the lower corner blocks (Ref.#15).

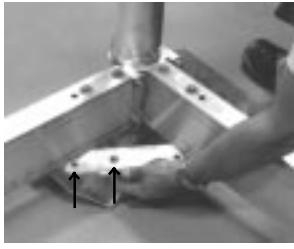
Note that the guide posts (Ref.#21) are factory-assembled with corner blocks (Ref.#15), 3/8" X 3-7/8" X 4-5/8" round u-bolts (Ref.#18) and 3/8" flange lock nuts.

The guide posts and adjustable leg can be adjusted to the water height - use the leg adjustment pins (Ref.#13) to level the hoist. Secure with hitch pin clips.

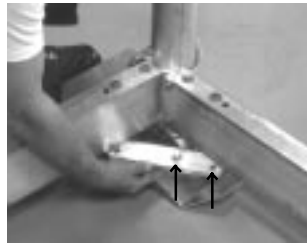
Slide the lower frame tubes (Ref.#16 & 17) onto the corner blocks. **NOTE: The drop side weldment is always facing the dock side of hoist. The pump will be lake side. This will determine the right and left side of the hoist. Refer to drawing for placement.** The 119" lower frame tubes (Ref.#16) are the frame spacers for width. The 131" lower frame tubes (Ref.#17) are the side frame.

Secure the lower frame to guide post using 3/8" X 5-1/2" hex bolts (Ref.#9) (3/8" flat washers to the head of bolt) nearest the guide posts. Tighten with 3/8" flange lock nuts.

SSV40120 HYD Lower Frame

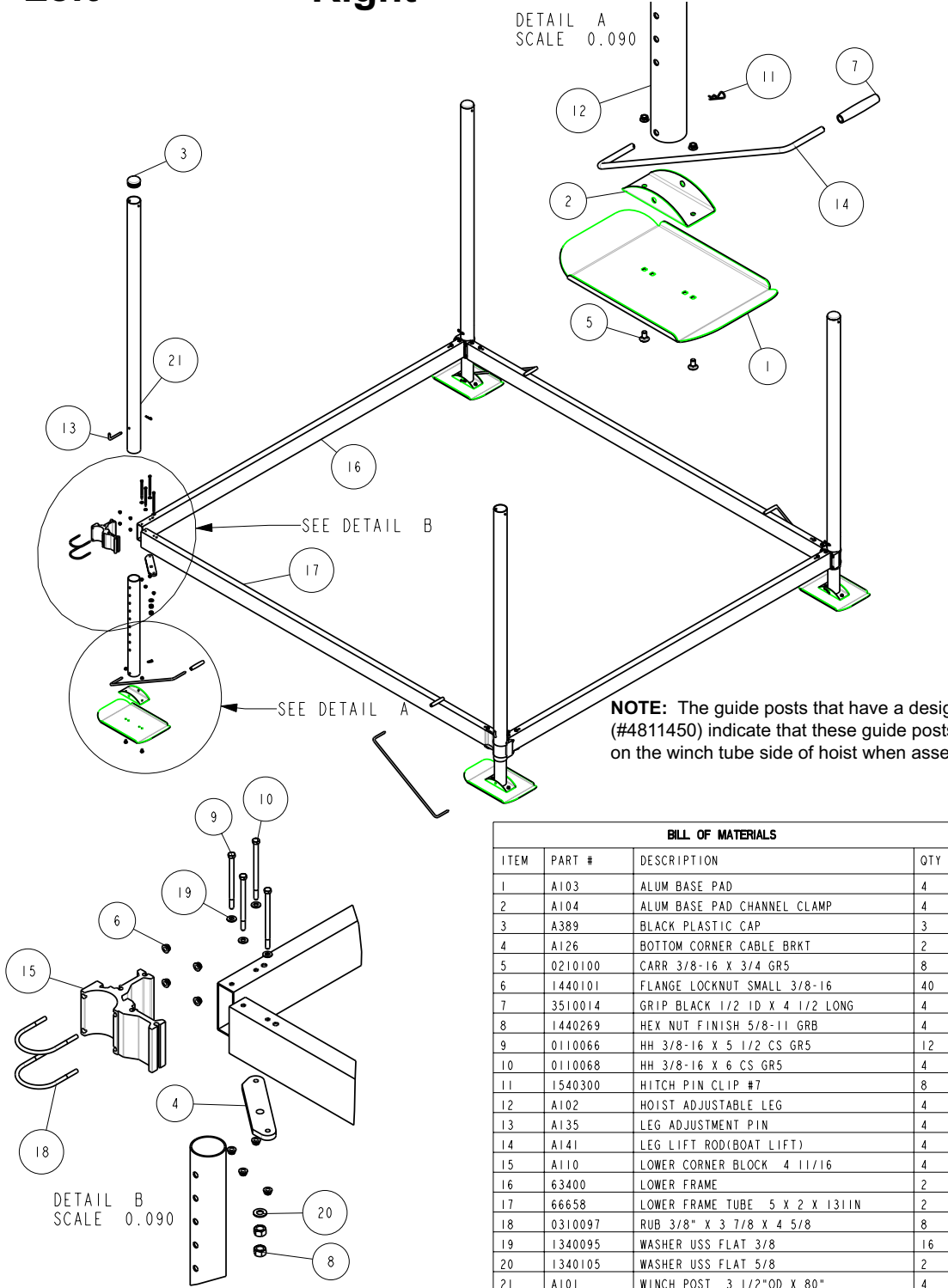


Left



Right

Facing winch post (from inside hoist) place the cable mounting bracket under the lower frame as shown. Note that the middle hole is NOT centered. Place the strap with the end closest to the center hole under the side frame (to your LEFT) and fasten with 3/8" X 6" hex bolts, 3/8" flat washer to the head of the bolt and 3/8" flange lock nuts. (NOTE: It is very important that the mounting straps are fastened as shown!) Repeat this procedure with the RIGHT cable mounting bracket on the winch side of hoist. Place the mounting bracket with end closest to the center hole under the side frame to your RIGHT. Refer to the pictures and arrows at the left of this paragraph.



NOTE: The guide posts that have a designated decal (#4811450) indicate that these guide posts that will go on the winch tube side of hoist when assembling.

BILL OF MATERIALS

ITEM	PART #	DESCRIPTION	QTY
1	A103	ALUM BASE PAD	4
2	A104	ALUM BASE PAD CHANNEL CLAMP	4
3	A389	BLACK PLASTIC CAP	3
4	A126	BOTTOM CORNER CABLE BRKT	2
5	0210100	CARR 3/8-16 X 3/4 GR5	8
6	1440101	FLANGE LOCKNUT SMALL 3/8-16	40
7	3510014	GRIP BLACK 1/2 ID X 4 1/2 LONG	4
8	1440269	HEX NUT FINISH 5/8-11 GRB	4
9	0110066	HH 3/8-16 X 5 1/2 CS GR5	12
10	0110068	HH 3/8-16 X 6 CS GR5	4
11	1540300	HITCH PIN CLIP #7	8
12	A102	HOIST ADJUSTABLE LEG	4
13	A135	LEG ADJUSTMENT PIN	4
14	A141	LEG LIFT ROD(BOAT LIFT)	4
15	A110	LOWER CORNER BLOCK 4 11/16	4
16	63400	LOWER FRAME	2
17	66658	LOWER FRAME TUBE 5 X 2 X 131IN	2
18	0310097	RUB 3/8" X 3 7/8 X 4 5/8	8
19	1340095	WASHER USS FLAT 3/8	16
20	1340105	WASHER USS FLAT 5/8	2
21	A101	WINCH POST 3 1/2"OD X 80"	4

DWG: LOWER_FRAME_ REV: 1.8

SSV40120 HYD Platform

BILL OF MATERIALS			
ITEM	PART #	DESCRIPTION	QTY
1	S-31796	2X6 BUNK BRKT SPUN GALV.	4
2	65064	ADJ BUNK BRKT. (BOAT LIFT)	4
3	3510132	AXLE PAD 12IN BLK	2
4	61046	BUNK ASSY W/BRKTS & STIFFENER	2
5	61047	BUNK SUPPORT FOR V55132 HOIST	2
6	3910024	BUNKWOOD 2 X 6 X 12FT FIR	2
7	3510099	BUSHING - NYLATRON V-HOIST	2
8	60989	BUSHING STAINLESS STEEL(BOAT LIF	2
9	3110361	CABLE LEVEL HYD V-HOIST STAINLES	2
10	64052	CABLE RETAINER CHANNEL - V FRAME	4
11	1510078	COTTER KEY 3/16 X 1	8
12	63062	CRADLE TUBE WMENT 120	2
13	0210060	ELEVATOR BOLT 1/4-20 X 2 1/4, GR2	12
14	1440102	FLANGE LOCKNUT SMALL 1/2-13	2
15	1440101	FLANGE LOCKNUT SMALL 3/8-16	20
16	1410079	HEX LOCKNUT 5/16-18 GRA	16
17	1440159	HEX NUT FINISH 1/2-13	8
18	1410049	HEX NUT FINISH 1/4-20	12
19	0110098	HH 1/2-13 X 2 1/2 CS GR5	2
20	0140045	HH 3/8-16 X 1 1/2 CS GR5	12
21	0140040	HH 3/8-16 X 1 CS GR5	4
22	0110070	HH 3/8-16 X7 CS GR5	4
23	0140022	HH 5/16-18 X 3/4 CS GR5	16
24	3510181	HOIST CORNER BLOCK	4
25	60991	KEEL PROTECTOR PLATE(BOAT LIFT)	2
26	1310040	LOCKWASHER 1/2 S/T MED	8
27	1310020	LOCKWASHER 1/4 S/T MED	12
28	3510033	MOTOR STOP PLASTIC TUBE	1
29	60992	MOTOR STOP TUBE	2
30	1540411	PIN - LARGE PULLEY STAINLESS STEEL	4
31	61054	PLATFORM RAIL EXTRUSION - 126 1/	2
32	3510194	PULLEY 5IN	4
33	0810930	SCREW SELFTAP #10-12X1 1/4 TYPE A	8
34	0810126	SCREW SELFTAPPING TYPE B 1/4X1/2	4
35	0310395	SUB 1/2 X 5 9/16 X 3	4
36	1340095	WASHER USS FLAT 3/8	20
37	1310085	WASHER USS FLAT 5/16	32
38	S-34486	WELD ON U-BOLT STRAP	2

DWG: PLATFORM_ASSY REV: 1.7

Place the cradle tube weldments (Ref.#12) onto the lower frame. **NOTE:** The cables (Ref.#9) that lay over the top of the pulley and then come out the bottom of the cradle tube weldment must be positioned on the pump side of hoist.

Place the cable end down through the hole in the cable mounting bracket on the determined winch tube side of hoist. Secure with a 5/8" flat washer and two (2) 5/8" hex nuts. Turn on the first nut then turn on the second nut with a wrench, turn first nut counter-clockwise with another wrench until the two (2) nuts are locked together securely. Repeat cable tightening procedure on the other cradle tube weldment at the opposite end of the hoist.

Install the platform I-beam (Ref.#31) to the cradle tube weldments using 5/16" X 3/4" hex bolts (Ref.#23). **NOTE:** The 5/16" flat washer should be positioned next to the aluminum to protect aluminum from gouging and at the head of the 5/16" X 3/4" hex bolt. Secure with 5/16" flat washers (Ref.#37) and 5/16" hex lock nuts (Ref.#16). Place two (2) 5/16" bolts in each of the top and

bottom flange on the platform I-beam. Repeat on all four (4) corners and tighten.

Slide the corner guide rings (Ref.#24) over the guide posts with the round edge of the nylon insert up. **IMPORTANT: The round edge much be up on all four (4) corner guide rings.**

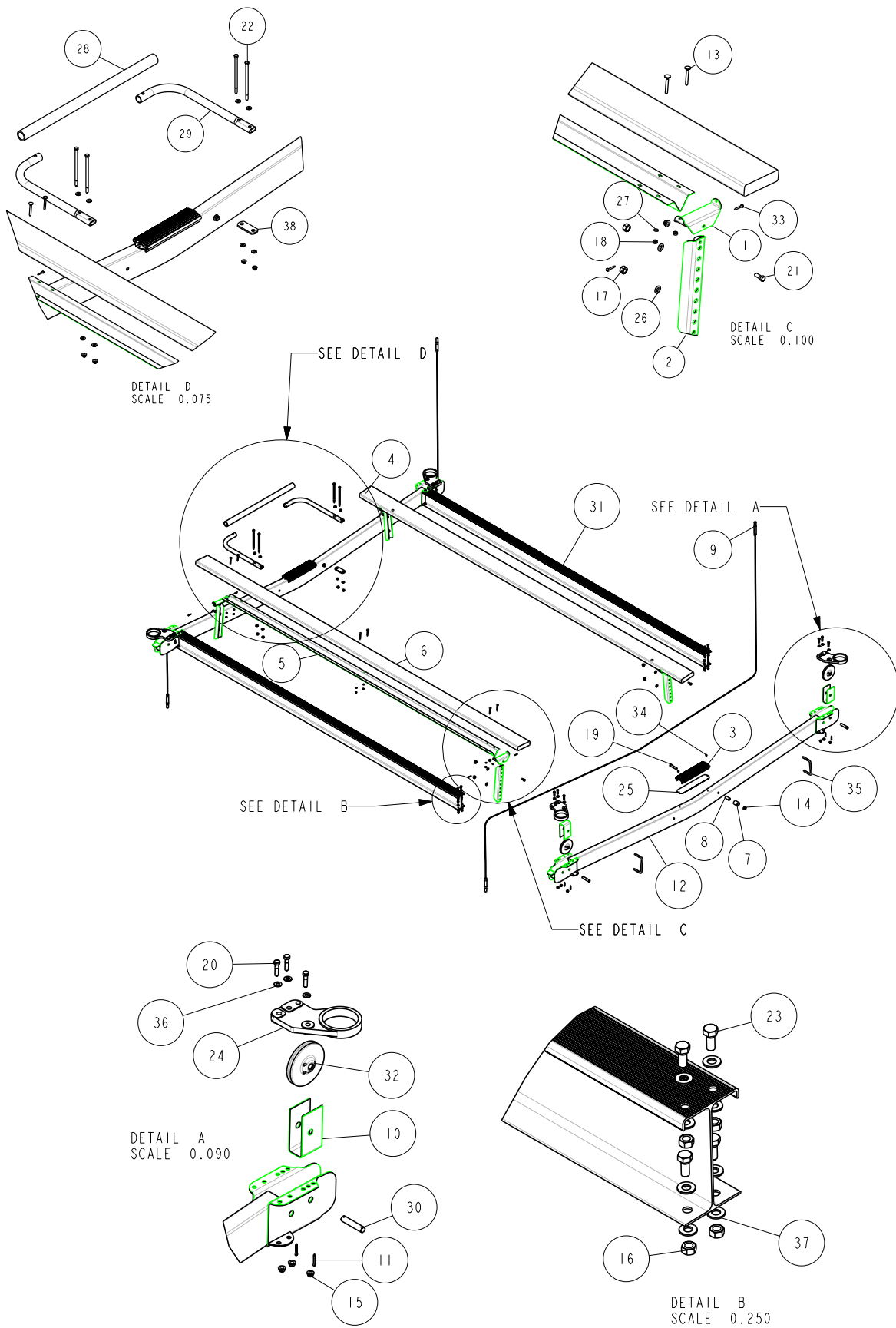
Match the bolt patterns on the corner guide ring and the cradle tube weldment flange. Insert 3/8" X 1-1/2" hex bolt (Ref.#20) with 3/8" flat washers (Ref.#36) at the bolts head and secure with 3/8" flange lock nuts. Repeat on all four (4) corners. Center the total platform on the lower frame. Position the corner guide ring on the guide post so the ring is centered and that there is 1/16" to 1/8" clearance on the inside of the corner guide ring and the guide post. Tighten all bolts. Repeat this process on all four (4) corners.



Determine which end of the hoist you will be driving your boat in from. Once determined, mount one (1) motor stop bracket (Ref.#29) to the cradle tube weldment with two (2) 3/8" X 7" hex bolts (Ref.#22), 3/8" flat washers, mounting strap (Ref.#38), 3/8" flat washer and 3/8" lock nuts. Tighten only finger tight. Slip the 30" plastic tube (Ref.#28) over the end of the motor stop bracket into the other end of the 30" plastic tube. Secure to the cradle tube weldment with 3/8" X 7" hex bolts, 3/8" flat washer on top and bottom and 3/8" hex lock nuts. Locate the motor stop brackets so that it is in the center of the cradle tube weldment and tighten.

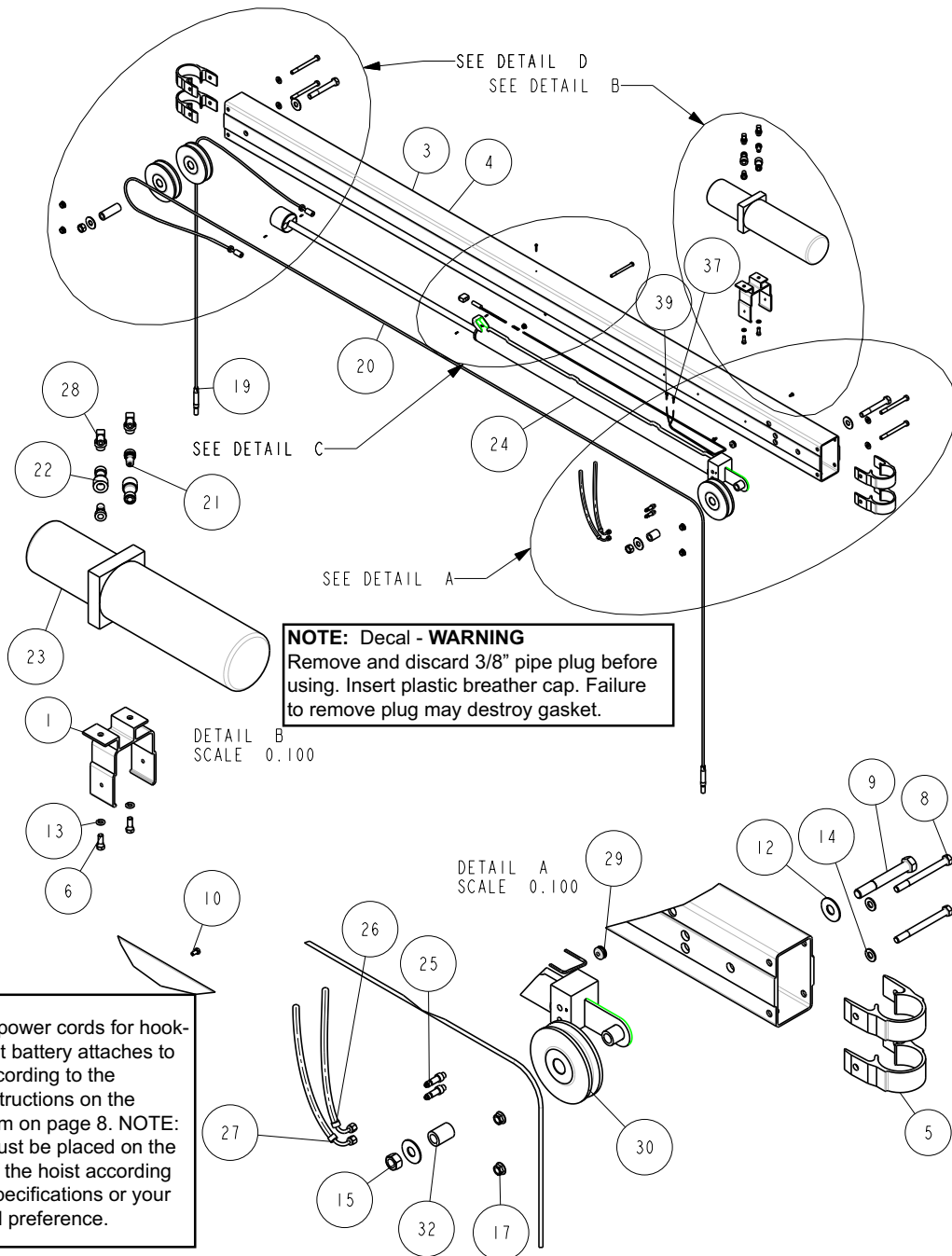
Place a 1/2" X 5-9/16" X 3" u-bolt over the cradle tube weldment so that the legs of the u-bolt are pointing to the center of the hoist. Place an adjustable bunk bracket over the u-bolt legs in an adjustment location that would best fit your water craft. Secure with two (2) 1/2" lock washers and 1/2" hex nuts. Repeat on the other side of the cradle tube weldment making sure that the u-bolts are all pointing to the center of the hoist to allow clearance for the lower frame.

Mount the bunk assemblies to the adjustable bunk brackets using 3/8" X 1" hex bolt and 3/8" flange lock nuts. Do not over tighten. The bunk assembly must pivot so that the bunks conform to the hull of your watercraft.



DWG: PLATFORM_ASSY REV: 1.7

SSV40120 HYD Winch Tube



NOTE: Decal - WARNING
 Remove and discard 3/8" pipe plug before using. Insert plastic breather cap. Failure to remove plug may destroy gasket.

DETAIL B
 SCALE 0.100

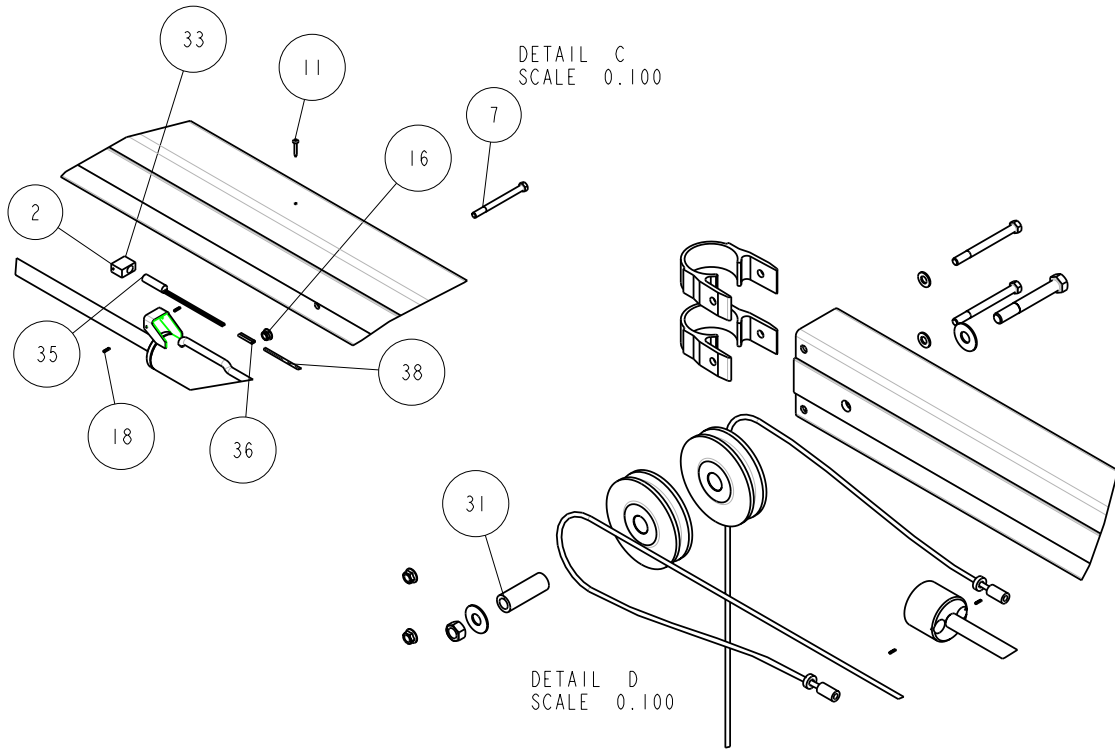
DETAIL A
 SCALE 0.100

NOTE: The power cords for hook-up to the boat battery attaches to the motor according to the assembly instructions on the wiring diagram on page 8. **NOTE:** The motor must be placed on the winch side of the hoist according to the boat specifications or your own personal preference.

NOTE: The hose connections on the winch tube connect male to female and female to male on the pump.

DWG: WINCHTUBE.40120 REV: 1.7+

SSV40120 HYD Winch Tube



BILL OF MATERIALS			
ITEM	PART #	DESCRIPTION	QTY
1	66589	MOTOR MOUNT BRKT	1
2	66637	SWITCH ASSEMBLY HYD HOISTS	1
3	66657	WINCH TUBE V40120 HYD	1
4	66660	WINCH TUBE BUNDLE V40120 HYD	1
5	66890	TOP CLAMP WINCH TUBE HYD HOISTS	4
6	0110038	HH 3/8-16 X 3/4 CS GR5	2
7	0110062	HH 3/8-16 X 4 1/2 CS GR5	1
8	0110125	HH 1/2-13 X 5 1/2 CS GR5	4
9	0110285	HH 3/4-10 X 5 1/2 CS GR5	2
10	0110316	HH 1/4-20 X 1/2 CS FULL THREADED	2
11	0810936	SCREW #12-24 X1 1/4 HWH SELF DRILL	1
12	1310120	WASHER USS FLAT 3/4 ULTRASEALED	4
13	1340030	LOCKWASHER 3/8 S/T MED ULTRASEAL	2
14	1340100	WASHER USS FLAT 1/2	4
15	1420309	HEX NUT 3/4-16 UNF	2
16	1440101	FLANGE LOCKNUT SMALL 3/8-16	1
17	1440102	FLANGE LOCKNUT SMALL 1/2-13	4
18	1540407	ROLL PIN - 1/8 X 1/2"	4
19	3110364	CABLE LIFT V40120 HYD	1
20	3110365	CABLE WINCH V40120 HYD	1
21	3210071	HYDRAULIC 1/4 IN MALE COUPLER	2
22	3210073	HYDRAULIC 1/4 IN FEMALE COUPLER	2
23	3210096	HYDRAULIC PUMP/MOTOR	1
24	3210098	BOBALEE 2.25" HYDRALIC ASSEMBLY	1
25	3210100	ADAPTOR STR THD 4 JIC-4 ORING	2
26	3210102	HOSE 20" 1/4-18 MP-4JIC FE SW 90	1
27	3210102	HOSE 20" 1/4-18 MP-4JIC FE SW 90	1
28	3210103	ADAPTOR 90 DEG MALE 1/4NPT-6ORIN	2
29	3510030	GROMMET 7/8IN MOLDED	1
30	3510228	6 1/2 DIA. SHEAVE	3
31	3610158	STAINLESS STEEL BUSHING-3 19/32	1
32	3610161	STAINLESS STEEL BUSHING-1.6875	1
33	3820075	MERCURY SWITCH HOUSING	1
34	DECAL CAUTION MAX LOAD	1	
35	5310156	SWITCH C5Z 002DURAKOOL MERCURY	1
36	5310190	CONNECTOR - BUTT 14 GA WIRE	2
37	5310192	RING 16/14 GROUNDING #10 SCREW	1
38	5310220	WIRE SHEATHED 2 STRAND 14 GA	1
39	5310224	CRIMP QUIKSLD 16/14 GA .25 TAB	1

DWG: WINCHTUBE_40120 REV: 1.7+

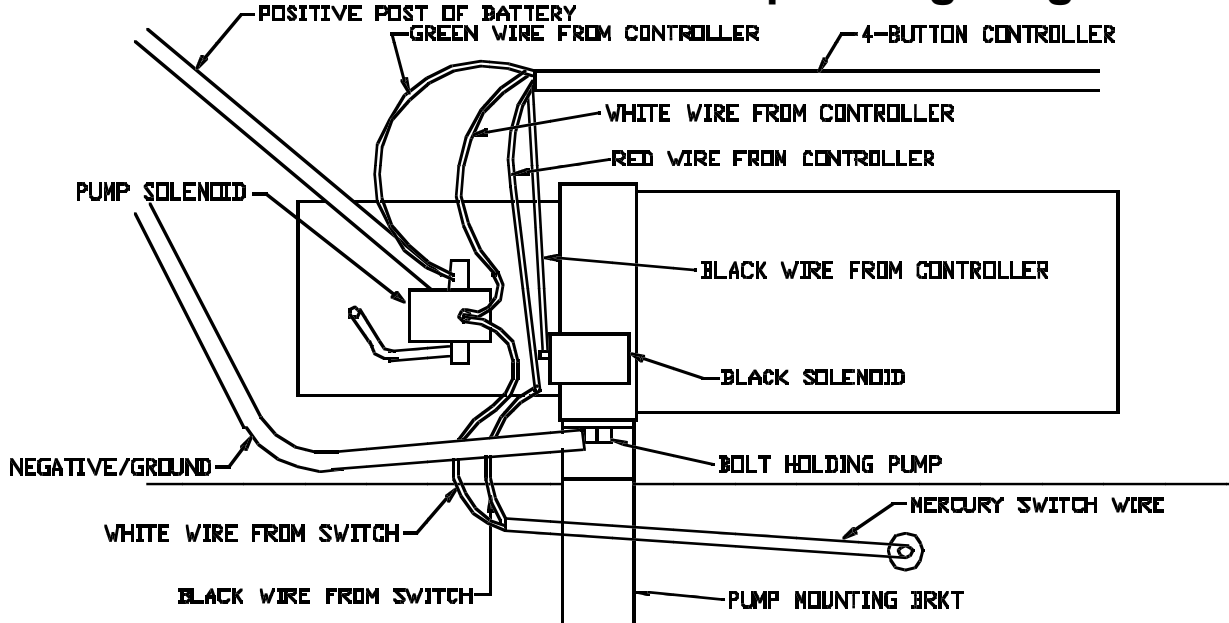
SSV40120 HYD Winch Tube Assembly Instructions

Mount the winch tube (Ref.#3) to the guide posts on the determined lake side. To assist installing the winch tube to the upright post use the following procedure: Place one of the clamps around the upright post with the top of the clamp at the point of the arrow on the decal. This arrow is factory placed for your convenience when positioning the winch tube on the guide posts. Place in the 1/2" X 5-1/2" hex bolt (Ref.#8) and 1/2" hex lock nut (Ref.#17). Tighten. Repeat this process on the other post. These clamps will be used to help support the weight of the winch tube while you install the top clamps.

Place the winch tube into position by setting it on top of the clamps just installed. Secure the winch tube to the guide post with the top clamps and bolts provided. Place the clamp around the winch tube, place the bolt through the clamp and winch tube. Secure with the 1/2" hex lock nut provided. Tighten. Once the top clamps are tightened, loosen the bottom clamps installed earlier. Slide them over the bottom of the winch tube and secure with the bolt just removed. Tighten. The winch tube assembly is now complete. NOTE: The winch tube inside components are factory installed. Refer to your dealer for service.

Mount the motor mount bracket (Ref.#1) over the winch tube in the designated location using two (2) 1/4" X 1/2" full threaded hex bolts (Ref.#10). Mount the hydraulic pump/motor (Ref.#23) to the motor mount bracket using two (2) 3/8" X 3/4" hex bolts (Ref.#6) and two (2) 3/8" lock washers (Ref.#13).

SSV40120 HYD Hoist Pump Wiring Diagram



Trouble Shooting

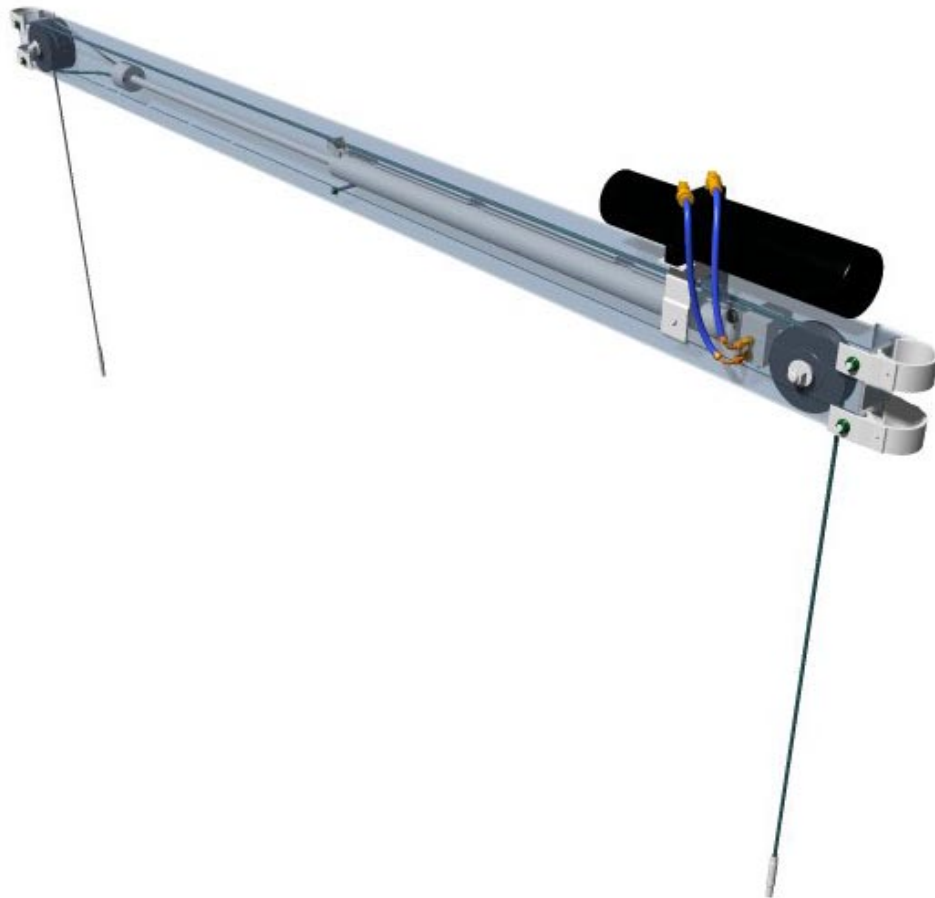
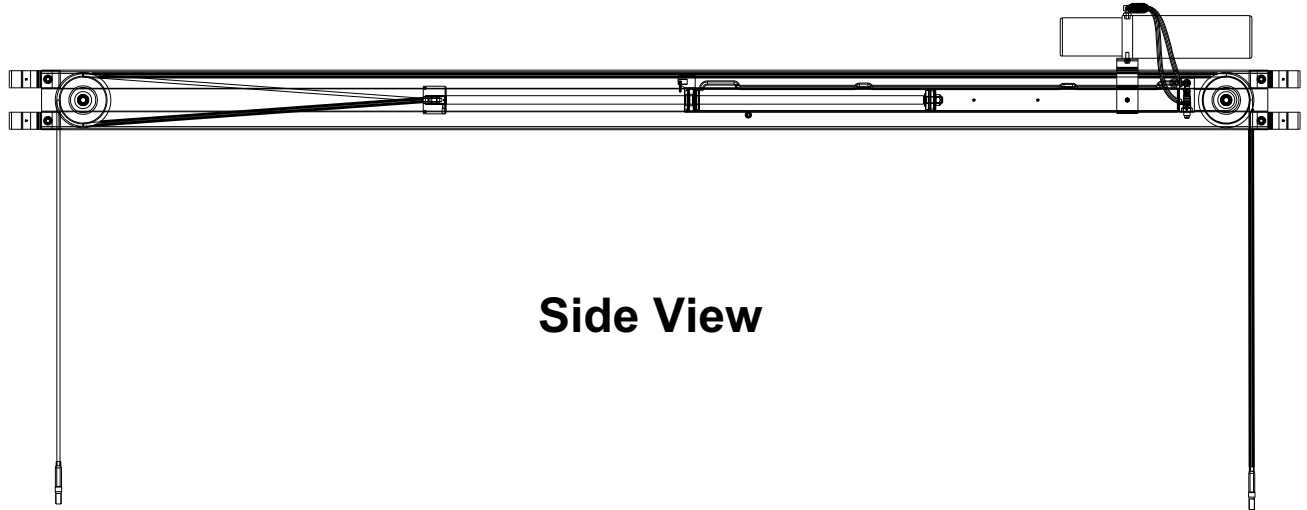
General:

1. Check to see that the motor is wired correctly with tight connections, and for the proper voltage.
2. Check reservoir oil level.
3. Check for external leakage at cylinders, hoses and power unit.

Typical Examples

Symptom	Possible Cause	Fixes & Hints
Unit will not start (See causes 1,2,3 & 10)	1. Improper voltage to motor. (A, F & G)	A. Check wiring and insure connections are tight, as well as proper voltage.
Unit drifts with power unit off. (See causes 5,6,7 & 8)	2. Improper ground. (A, H & I)	B. Keep oil reservoir full & clean.
Slow cylinder travel. (See causes 1,2,3,7,8,9,10 & 11)	3. Relief valve set too low. (C & E)	C. Do not adjust valves without the proper equipment (pressure-gauge).
Unit will not lower. (See causes 2,4,5 & 11)	4. Relief valve set too high. (C & E)	D. Flush & clean hydraulic system.
	5. Improper voltage to valve solenoid. (A & H)	E. Adjust relief valve to proper setting.
	6. Leakage through pump check valve. (D & F)	F. Replace component.
	7. Leakage through solenoid lowering valve. (D & F)	G. Return for necessary repair.
	8. Internal leakage at cylinder. (F & G)	H. Check for clean tight metal to metal chassis ground.
	9. Insufficient oil to pump. (B, D & G)	I. Make sure nut is tight on solenoid valve 15 in LB max.
	10. Pump seized - frozen up. (F& G)	
	11. Cylinder overloaded. (C & E)	

SSV40120 HYD Winch Tube Cable Diagram

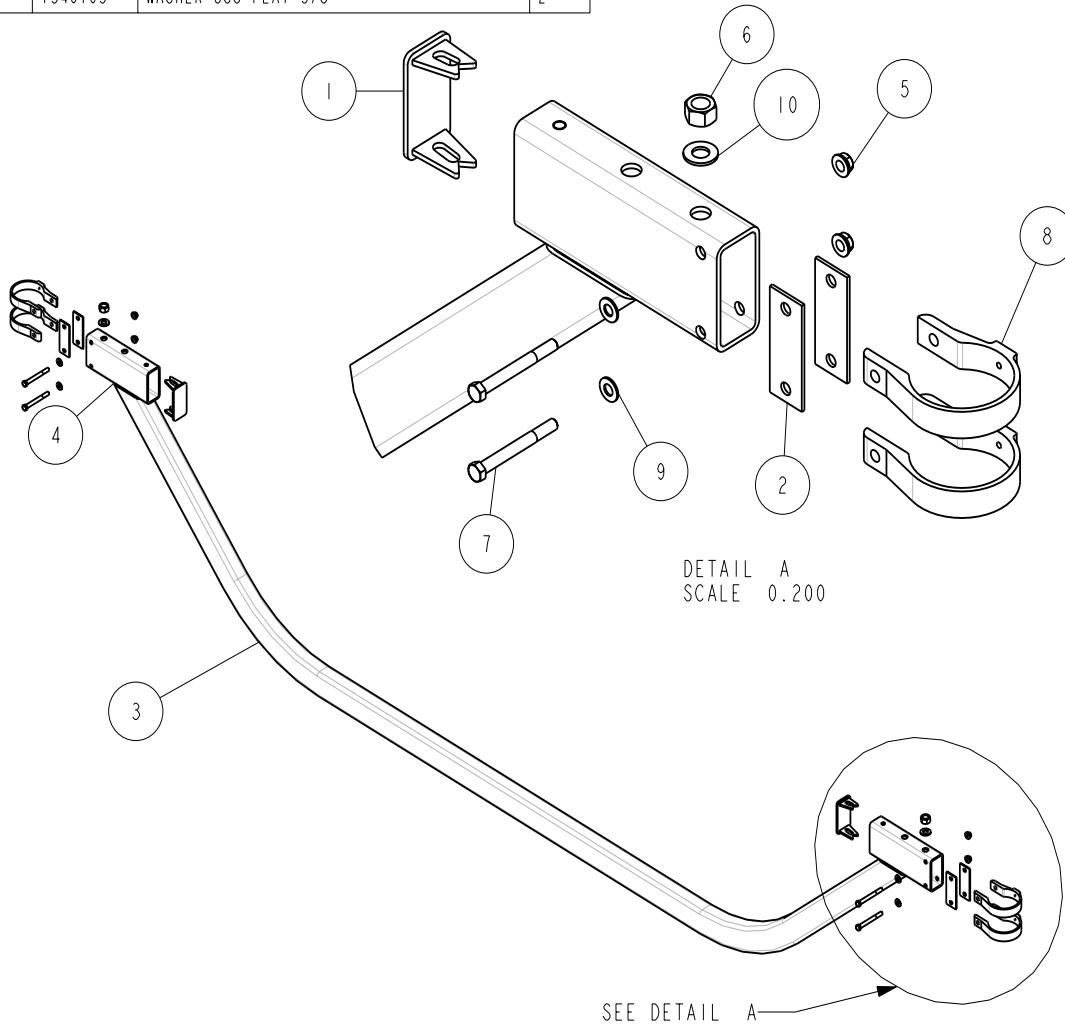


SSV40120 HYD Drop Side

BILL OF MATERIALS			
ITEM	PART #	DESCRIPTION	QTY
1	S-547	2X4 SL PLASTIC END CAP	2
2	66592	CLAMP/SHIM HYD V60120	4
-	4850356	DECAL CAUTION MAX LOAD	1
-	4811446	DECAL CAUTION WARNING	1
-	4811445	DECAL SHORESTATION ORIGINAL/1959	2
3	66659	DROP SIDE ASSY - V40120 HYD	1
4	66655	DROP SIDE WMENT - V40120 HYD	1
5	1440101	FLANGE LOCKNUT SMALL 3/8-16	4
6	1440269	HEX NUT FINISH 5/8-11 GRB	2
7	0110058	HH 3/8-16 X 3 1/2 CS GR5	4
-	0000911	LABEL W/PERMANENT ADHESIVE	1
8	65937	TOP CLAMP 1IN WITH 2 3/8 OPENING	4
9	1340095	WASHER USS FLAT 3/8	4
10	1340105	WASHER USS FLAT 5/8	2

Mount the drop side weldment (Ref.#3) to the guide posts on the determined dock side using four (4) top clamps (Ref.#8) and shims (Ref.#2). Position the drop side weldment so that it positioned just above the arrow decals on the guide posts. This arrow decal is factory placed for your convenience when positioning the drop side weldment on the guide posts. Tighten the top clamp with clamp/shims to the drop side weldment and guide posts using 3/8" X 3-1/2" hex bolts (Ref.#7), 3/8" flat washer (Ref.#9) and 3/8" flange lock nuts (Ref.#5).

Run the cables from the platform or cradle tube weldments on the dock side or drop side of hoist up through the drop side weldment and tighten using a 5/8" flat washer (Ref.#10) and 5/8" hex finish nut (Ref.#6).



DWG: DROP_SIDE REV: 1.4

Adjustable Step

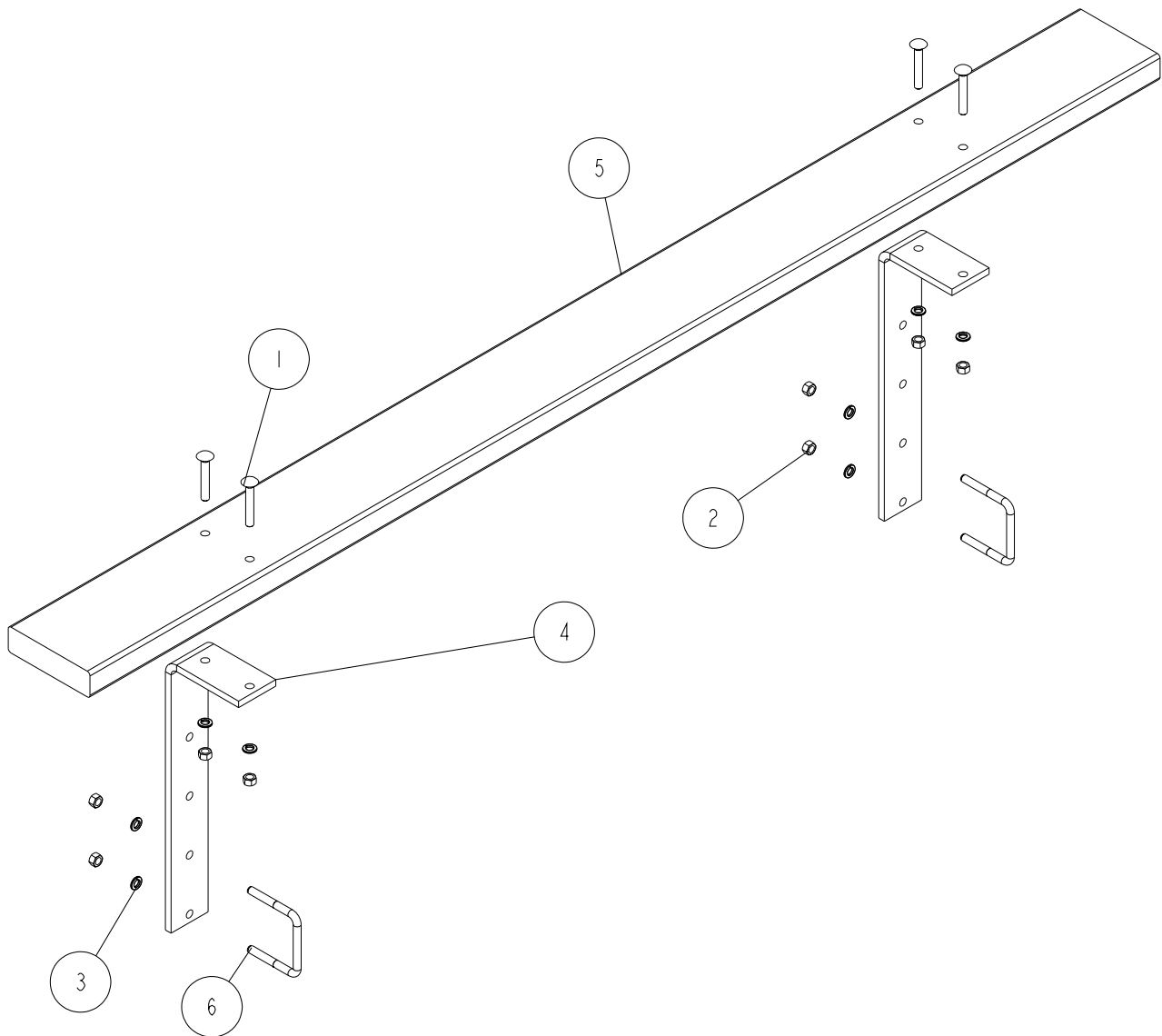
SS1202 Adjustable Step - Hydraulic Hoist

BILL OF MATERIALS			
ITEM	PART #	DESCRIPTION	QTY
1	0210125	CARR 3/8-16 X 2 1/2 GR5	4
2	1410109	HEX NUT FINISH 3/8-16	8
3	1340030	LOCKWASHER 3/8 S/T MED	8
4	66845	STEP BRKT FOR HYD HOIST	2
5	66844	STEP BUNK FOR HYD HOIST	1
6	0310108	SUB 3/8-16 X 3 7/16 X 3	2

Remove the existing bunk assembly on the drop side weldment.

Mount the step brackets (Ref.#4) to the step bunk (Ref.#5) using four (4) 3/8" X 2-1/2" carriage bolts (Ref.#1) down through the step bunk and step brackets. Secure with 3/8" lock washers (Ref.#3) and 3/8" hex nuts (Ref.#2).

Determine the location on the drop side weldment that you would mount this assembly and mark. Attach the step assembly to the drop side weldment using two (2) 3/8" X 3-7/16" X 3" square u-bolts (Ref.#6) and secure with 3/8" lock washers and 3/8" hex nuts.



SSV40120 HYD Control Arm

SS1204 Control Arm Assembly for Hydraulic Hoists

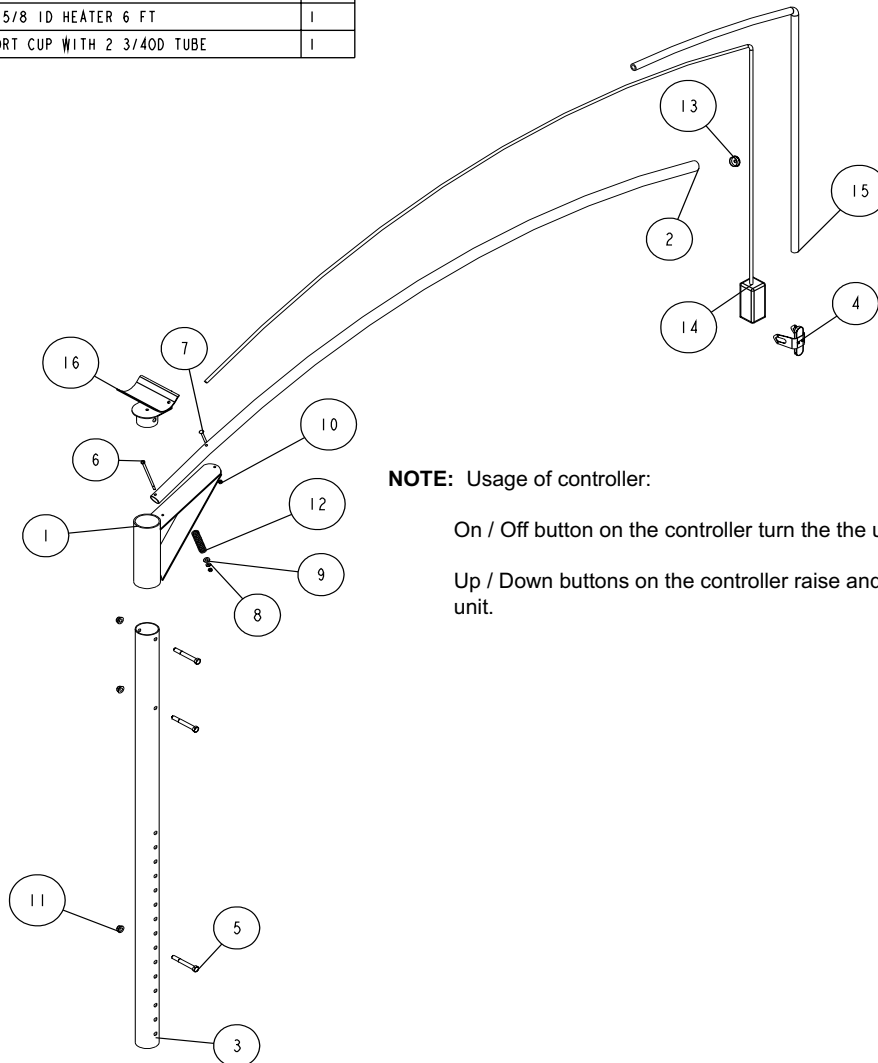
BILL OF MATERIALS			
ITEM	PART #	DESCRIPTION	QTY
1	66596	CONTROL ARM PIVOT WMENT	1
2	66597	CONTROL ARM TUBE	1
3	66829	CANOPY/CONTROLLER LEG TUBE 40120	1
4	66859	CONTROLLER LOCKOUT ASSY	1
5	0110114	HH 1/2-13 X 4 CS GR5	3
6	0110315	HH 1/4-20 X 6 CS GR5 ZP	1
7	0210051	CARR 1/4-20 X 2 1/4 GR5	1
8	1310070	WASHER USS FLAT 1/4	1
9	1340095	WASHER USS FLAT 3/8	1
10	1410049	HEX NUT FINISH 1/4-20	2
11	1440102	FLANGE LOCKNUT SMALL 1/2-13	3
12	2121227	SPRING COMP .93750D X 4 X .148	1
13	3510229	BUSHING W/FLANGES, BLACK PLASTIC	1
14	5310223	CONTROLLER W/CABLE	1
15	3210104C	HOSE 5/8 ID HEATER 6 FT	1
16	A175	SUPPORT CUP WITH 2 3/4OD TUBE	1

Slide the black bushing with flanges (Ref.#13) in the end of the control arm and thread the control cable (Ref.#14) through the tube.

Slide the 72" extension leg (Ref.#3) into the guide post nearest to the hydraulic pump/motor on lake side of hoist. Secure with a 1/2" X 4" hex bolts (Ref.#5) and 1/2" flange lock nuts (Ref.#11) in an adjustment holes for desired height.

Slide the control arm weldment assembly (Ref.# 1 & 2) over the extension leg just installed. This assembly will rest on the top 1/2" X 4" hex bolt just installed. The control arm weldment assembly must be able to swivel freely.

Connect the controller with cable to the hydraulic pump/motor.



NOTE: Usage of controller:

On / Off button on the controller turn the the unit on and off.

Up / Down buttons on the controller raise and lower the unit.

SSV40120 HYD Loadguide - Optional

SS1197 Loadguides - SSV40120 HYD

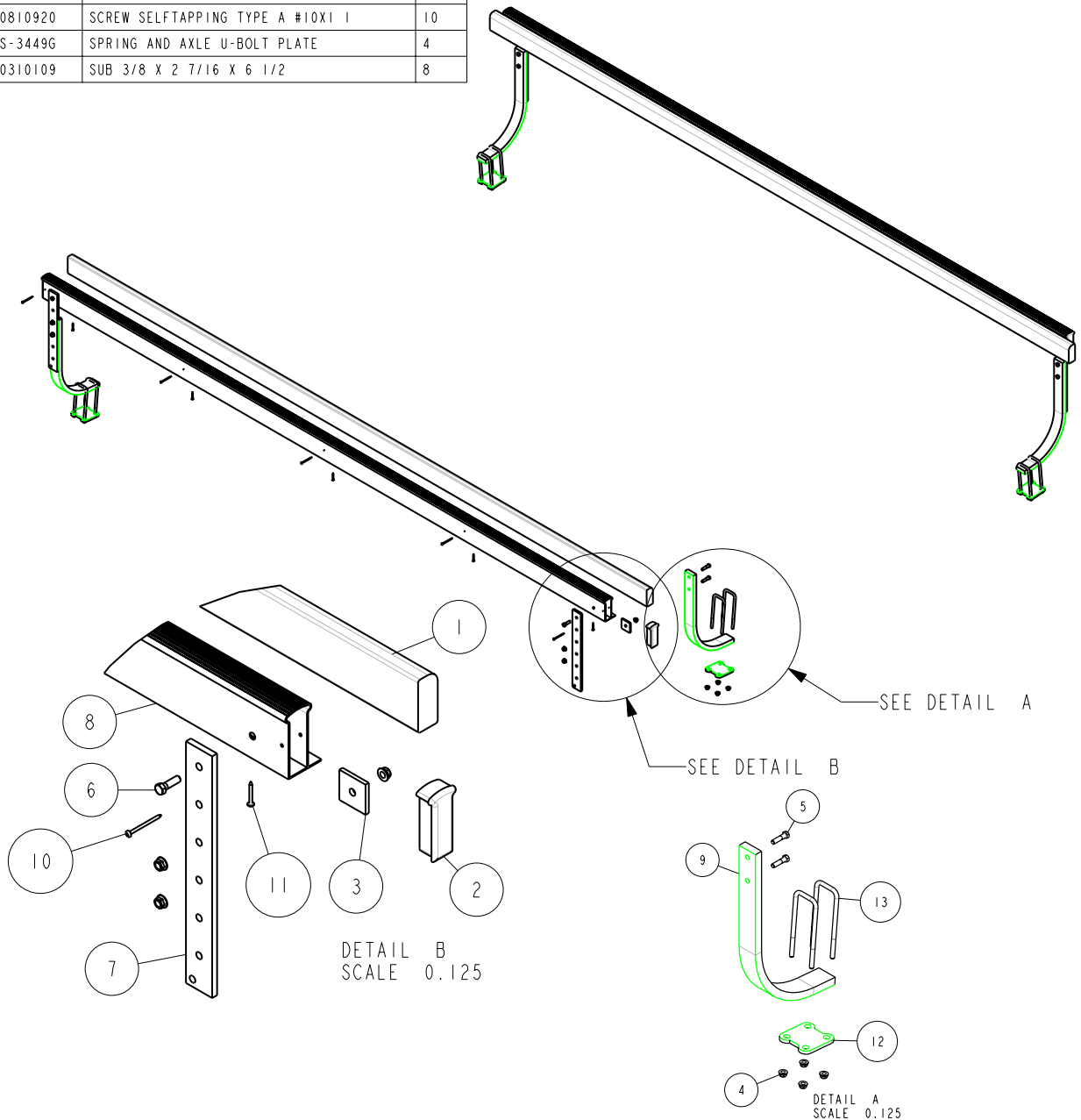
BILL OF MATERIALS			
ITEM	PART #	DESCRIPTION	QTY
1	66705	BUNK LOADGUIDE SSV40120 HYD	2
2	3510227	END CAP LOAF LOADGUIDE	4
3	62406	FENDER SUPPORT BRKT	4
4	1440101	FLANGE LOCKNUT SMALL 3/8-16	28
5	0140045	HH 3/8-16 X 1 1/2 CS GR5	8
6	0110037	HH 3/8-16 X 1 1/4 CS GR5	4
7	66629	LOADGUIDE ADJ ARM HYD V60120	4
8	66704	LOADGUIDE EXTRUSION SSV40120 HYD	2
9	66628	LOADGUIDE MTG BRKT HYD V60120	4
10	0810919	SCREW SELFTAP TYPE A #10X2 1/2 P	10
11	0810920	SCREW SELFTAPPING TYPE A #10X1 1	10
12	S-34496	SPRING AND AXLE U-BOLT PLATE	4
13	0310109	SUB 3/8 X 2 7/16 X 6 1/2	8

Move the loadguide adjustment arm (Ref.#7) on the bunk loadguide assembly (Ref.#1 & 8) in a downward position.

Assemble the bunk loadguide assembly to the loadguide mounting brackets (Ref.#9) in the desired height location using two (2) 3/8" X 1-1/2" hex bolts (Ref.#5) and two (2) 3/8" flange lock nuts.

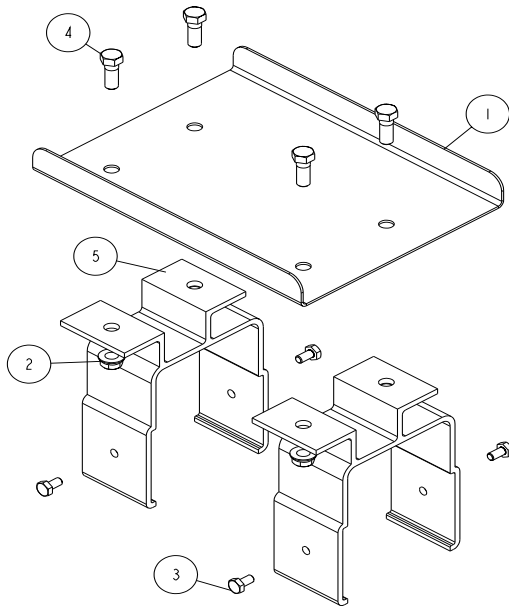
Determine the distance between guide post to where you want to position the loadguide assembly and mark. Attach the loadguide assembly to the platform using 3/8" X 2-7/16" X 6-1/2" square u-bolts over the loadguide mounting bracket and through the spring u-bolt plate. Secure with 3/8" flange lock nuts.

Tighten all flange lock nuts.



Battery Mounting Hardware - Optional

SS1203 Battery Mounting Hardware - Hydraulic Hoist



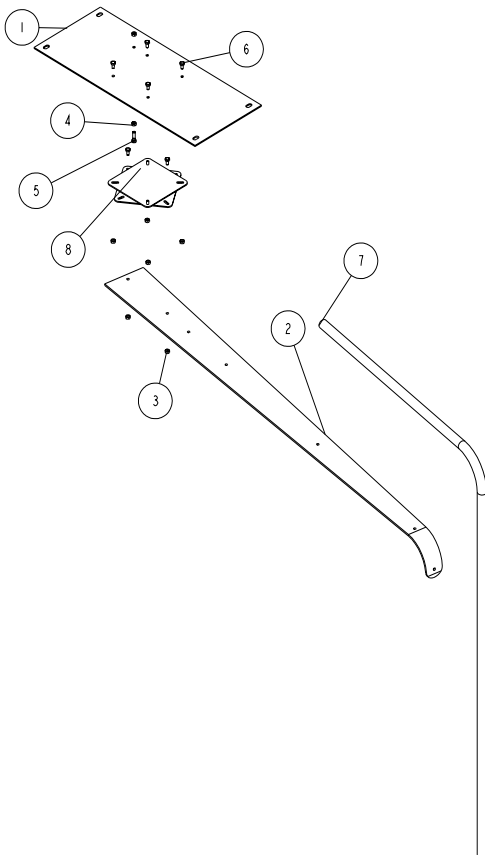
BILL OF MATERIALS			
ITEM	PART #	DESCRIPTION	QTY
1	66590	BATTERY HOLDER BRKT	1
2	1440101	FLANGE LOCKNUT SMALL 3/8-16	4
3	0110316	HH 1/4-20 X 1/2 CS FULL THREADED	4
4	0110038	HH 3/8-16 X 3/4 CS GR5	4
5	66589	MOTOR MOUNT BRKT	2

Mount the motor mounting bracket (Ref#5) to the winch tube in the designated holes using four (4) 1/4" X 1/2" full threaded hex bolts (Ref.#3).

Mount the battery holder bracket (Ref.#1) to the motor mounting brackets using four (4) 3/8" X 3/4" hex bolts (Ref.#4). Secure with 3/8" flange lock nuts (Ref.#2).

Canopy Pendant Holder - Optional

SS1205 Canopy Pendant Holder - Hydraulic Hoist

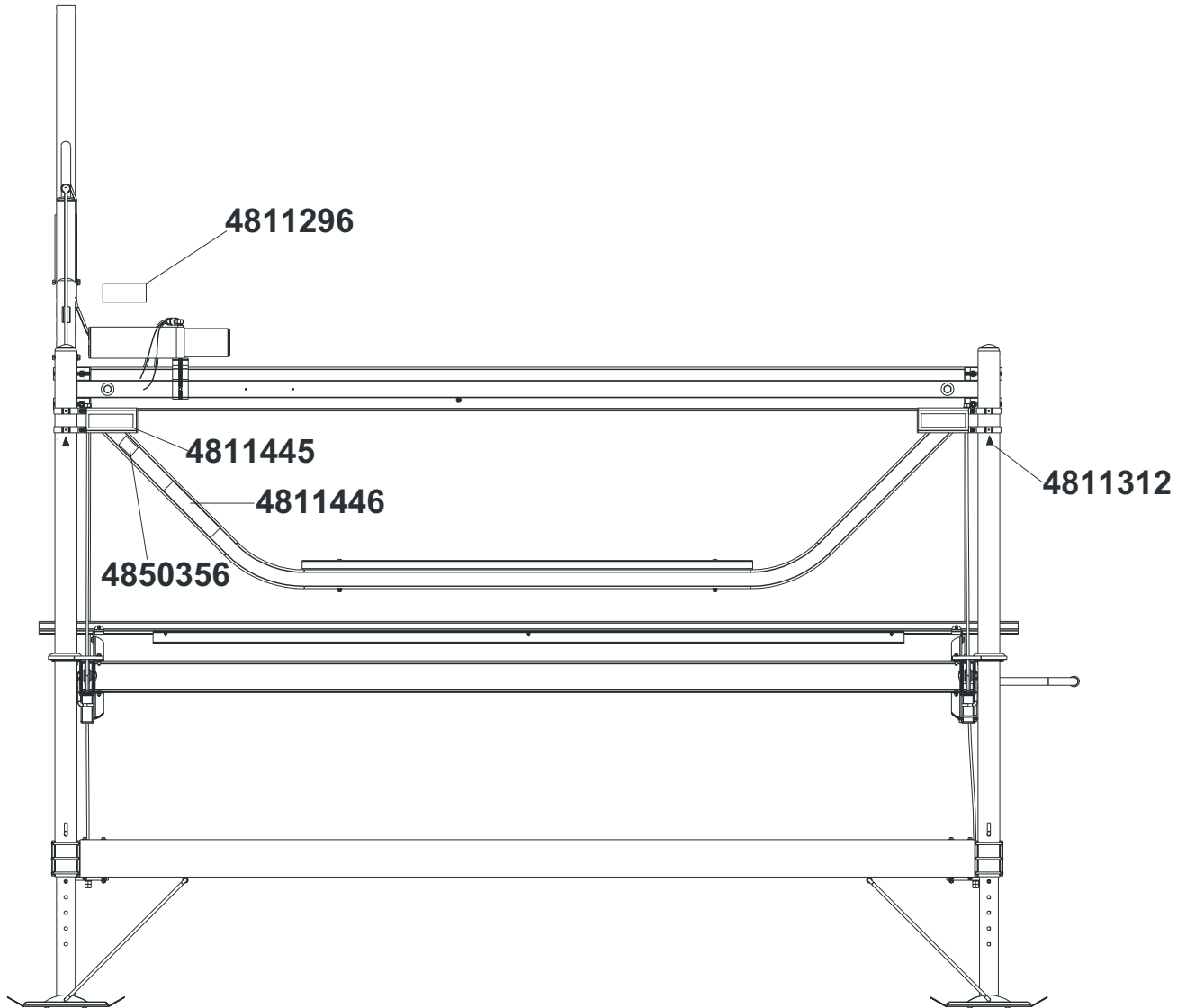


BILL OF MATERIALS			
ITEM	PART #	DESCRIPTION	QTY
1	66841	CANOPY PENDANT BRACKET	1
2	66842	CONTROLLER SWING ARM	1
3	1410059	HEX LOCKNUT 1/4-20 GRA	6
4	1410049	HEX NUT FINISH 1/4-20	2
5	0110021	HH 1/4-20 X 1 1/2 CS GR5	1
6	0110316	HH 1/4-20 X 1/2 CS FULL THREADED	6
7	3210104P	HOSE 5/8 ID HEATER 6 FT	1
8	2400008	SWIVEL - ZINC PLATED	1
-	1110036	WIRE TIE 4 IN BLACK	4

Place the canopy pendant bracket assembly under the bows of the canopy frame in the center nearest to the hydraulic pump/motor. Secure the pendant bracket to the bows of the canopy frame using four (4) 1-3/4" hose clamps.

Run the controller cable along the side of the controller swing arm. Secure the controller cable to the controller swing arm using five (5) black wire ties.

SSV40120 HYD Decal Placement



PART#	DESCRIPTION	QTY
4811445	DECAL SHORESTATION ORIGINAL/1959	2
4811446	DECAL CAUTION WARNING	1
4850356	DECAL CAUTION MAX LOAD 4000 LBS.	2
4811296	DECAL PIPE PLUG WARNING	1
4811312	DECAL CLAMP ARROW ALUMINUM HOIST ..	4

