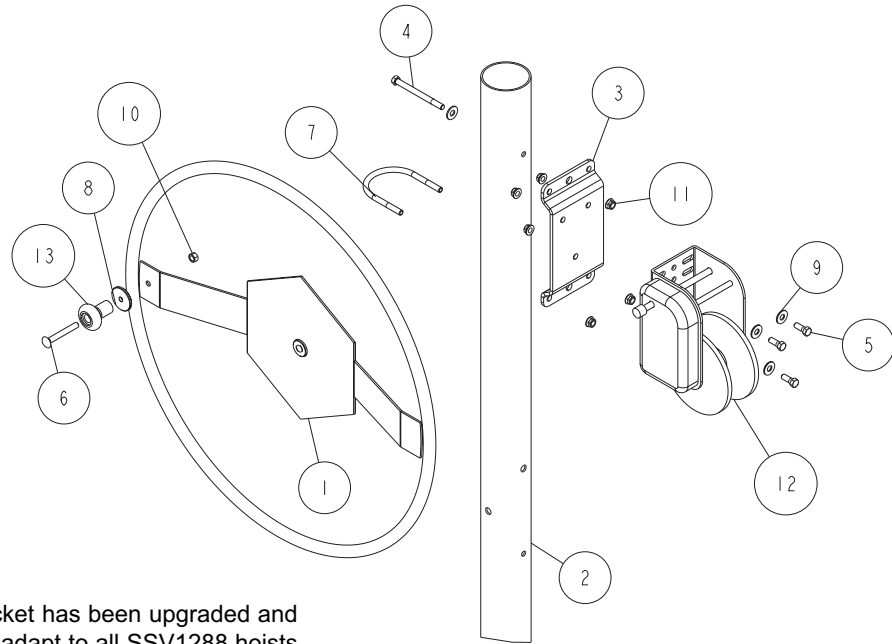


### SSV1288 Winch Post Bracket Amendment



The SSV1288 Winch Post Bracket has been upgraded and changed to the following. It will adapt to all SSV1288 hoists in the field and can be used in both a left-hand and right-hand installation.

Locate the mounting plate (Ref. No. 3). Note that there is a top and bottom because of the bolt pattern. The diagram above is showing a left-hand installation. When using as a right-hand installation the mounting plate will be rotated 180 degrees so the top as shown now becomes the bottom. Note that the winch is also rotated 180 degrees in the right-hand installation.

Attach the winch to the mounting plate using 3- 3/8" x 1" Hex bolts and flange lock nuts. Tighten. Place a flat washer on a 3/8" x 4" hex bolt and then insert it into the hole provided in the upright post. Raise the mounting plate with the winch attached up so the center hole in the bracket aligns with the bolt just inserted in the post. Slide the mounting bracket on the bolt and secure with a 3/8" flange lock nut.

Place a 3/8" x 3 7/8" x 4 5/8" round U-bolt around the upright post aligning the legs with the holes provided in the mounting plate. Secure with 3/8" flange lock nuts. Tighten the nut on the mounting bolts and U-bolts. Installation is complete.

#### BILL OF MATERIALS

ITEM	PART #	DESCRIPTION	QTY
1	64958	WMENT 30IN WHEEL SSV1088	1
2	64966	WINCH TUBE 80IN	1
3	67971	MOUNTING PLATE	1
4	0110062	HH 3/8-16 X 4 1/2 CS GR5	1
5	0140040	HH 3/8-16 X 1 CS GR5	3
6	0210128	CARR 3/8-16 X 3 GR5	1
7	0310097	RUB 3/8" X 3 7/8 X 4 5/8	1
8	1310180	WASHER TAPPED 1 13/16 OD X 7GA	1
9	1340095	WASHER USS FLAT 3/8	4
10	1410109	HEX NUT 3/8-16	1
11	1440101	FLANGE LOCKNUT SMALL 3/8-16	6
12	3110333	WINCH B1500 BRAKE WINCH	1
13	3510001	SPINNER KNOB	1