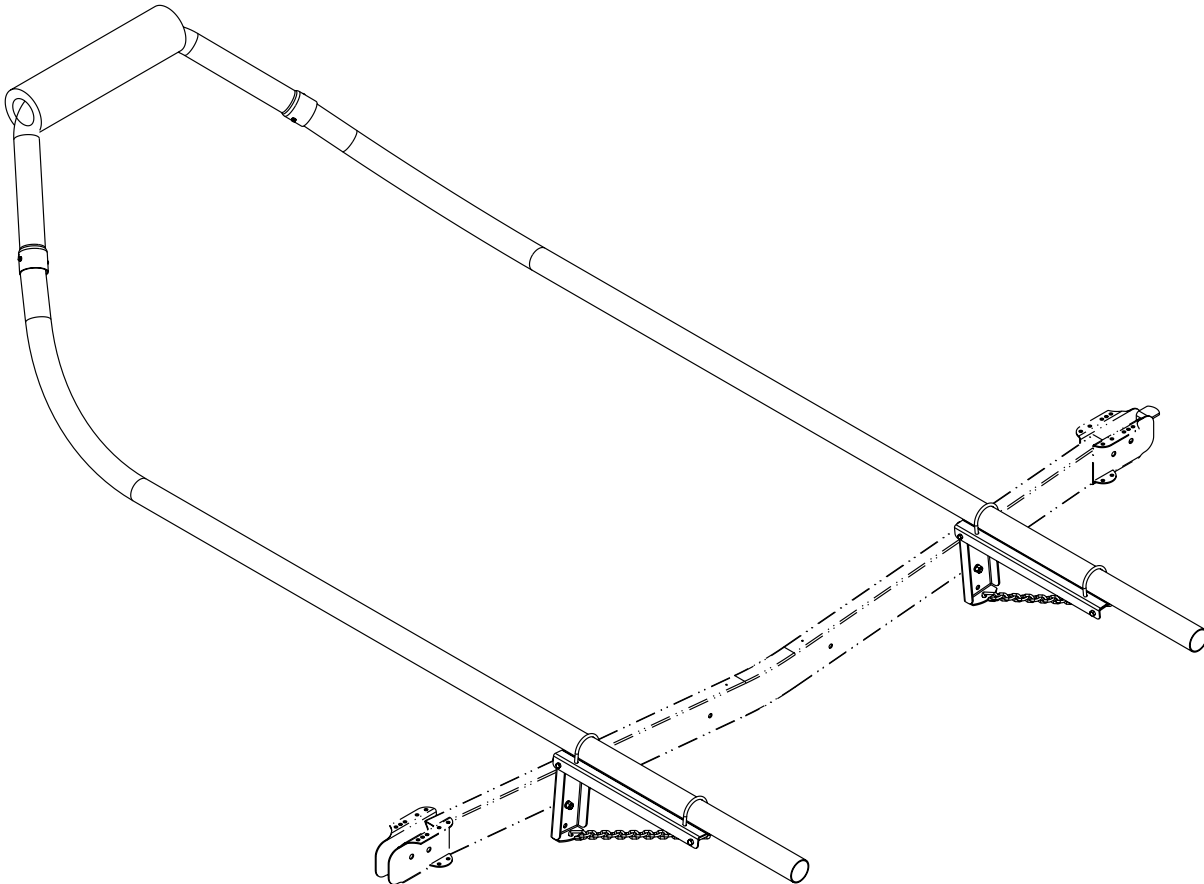


### HA1242 Front End Boat Stop for 3,000, 4,000, 5,000, 6,000 & 9,000 lb. Boat Hoists



#### HA1242 Front End Boat Stop

For 3,000, 4,000, 5,000, 6,000, & 9,000 lb. Boat Hoists

The **HA1242** Front End Boat Stop is partially assembled when it leaves the factory.

Identify the end of the hoist where the front of the boat will be positioned during use. Locate the two (2) arm support assemblies as shown in Diagram A, Detail A.

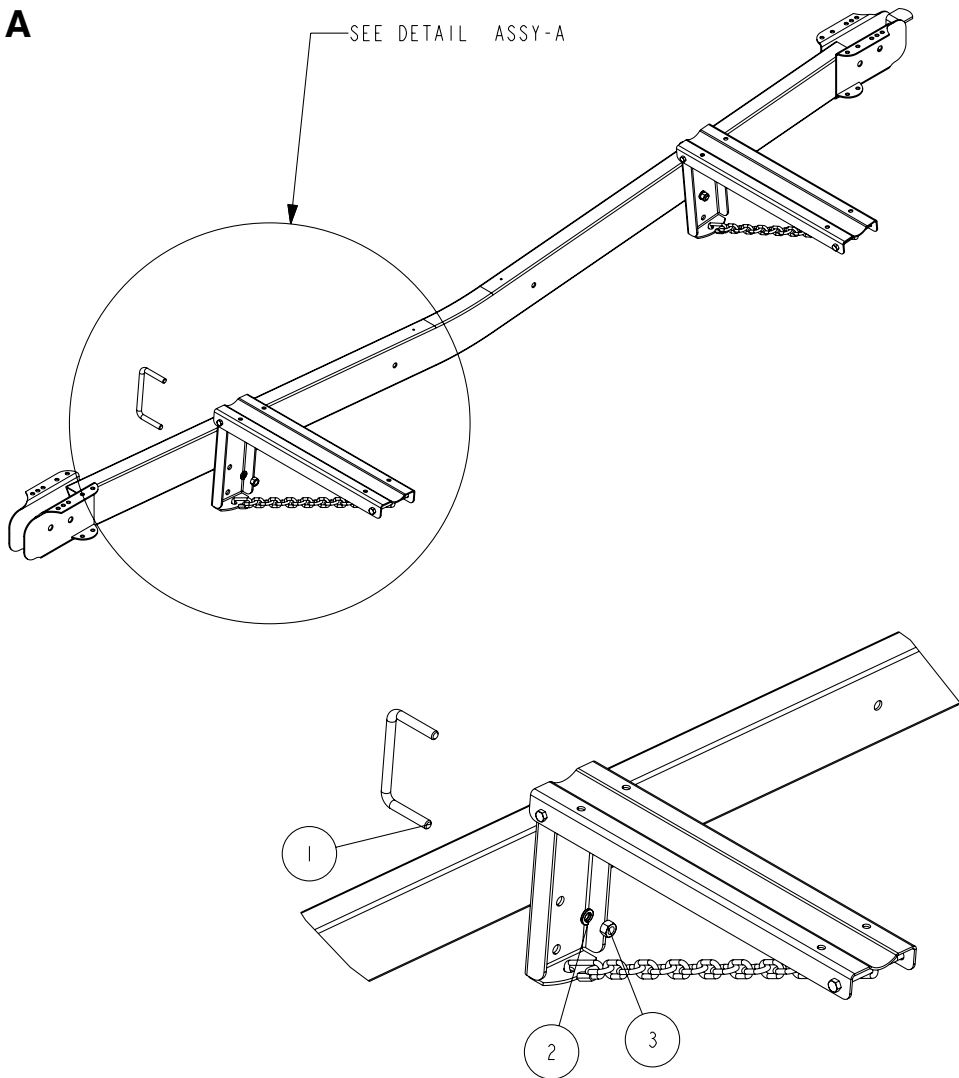
#### Hoists 3,000 - 6,000 lbs. capacity, 2" x 5" platform tube

Attach the arm support assemblies to the 2" x 5" hoist platform tube with 1/2" x 5-9/16" x 3" U-bolts, lock washers and hex nuts.

#### Hoist with 9,000 lbs. capacity, 2" x 8" platform tube

Attach the arm support assemblies to the 2" x 8" hoist platform tube with 1/2" x 8-9/16" x 3" U-bolts, lock washers and hex nuts.

# Diagram A



DETAIL ASSY-A  
SCALE 0.125

BILL OF MATERIALS			
ITEM	PART #	DESCRIPTION	QTY
1	0310395	SUB 1/2 X 5 9/16 X 3	2
2	1310040	LOCKWASHER 1/2 S/T MED	4
3	1440159	HEX NUT FINISH 1/2-13	4

WHEN MOUNTING TO AN 8" FRAME REPLACE #1 USING 0310401 1/2 X 8 9/16 X 3 SUB

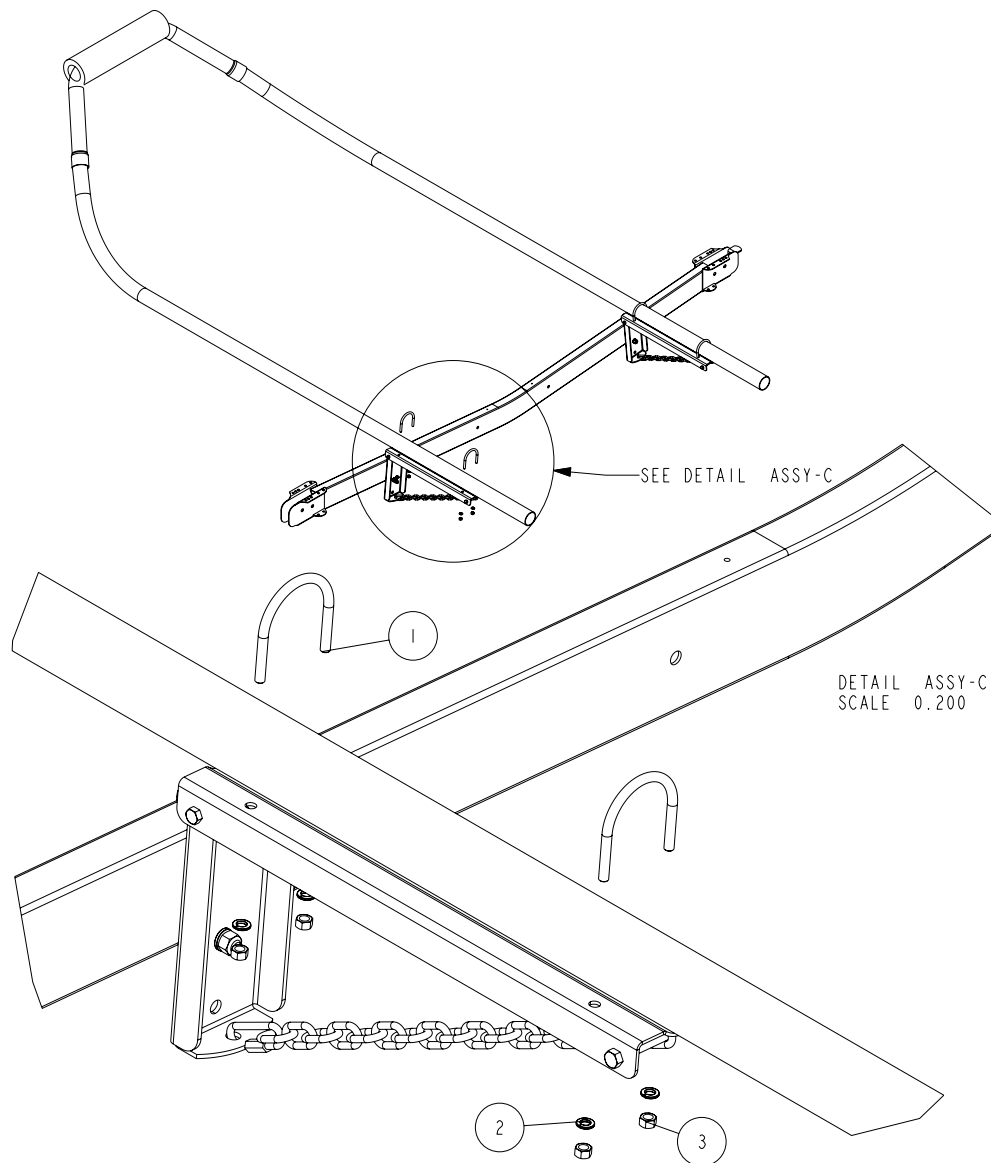
Slide the two (2) arm support assemblies on the platform tube until they are centered on the hoist crossways and are located approximately 72" apart. Hand tighten the hex nuts only at this point.

Locate the two (2) boat stop arm tubes and the front tube assembly as shown in Diagram B and C. Place one of the boat stop arm tubes on one of the arm support assemblies just installed onto the platform. Secure in place with two (2) 3/8" X 3- 7/16" x 3-1/4" round U-bolts as shown in Diagram B. Secure with 3/8" lock washers and hex nuts. Hand tighten only because they will have to loosened again during the next step.

Repeat this process on the second boat stop arm tube positioning it on the arm support assembly in the approximate location as the first one was installed.

Rotate the boat stop arm tubes upward into the approximate position as shown in Diagram B. Locate the front tube assembly. Slide one end of the assembly over the end of one of the boat stop arm tubes just installed. Then slide the other end on the second boat stop arm tube. Note that the arm support assemblies may have to be moved either farther apart or closer together to fit the front tube assembly. The second one may have to moved either forward or backward as well to match the first boat stop arm tube.

## Diagram B



BILL OF MATERIALS			
ITEM	PART #	DESCRIPTION	QTY
1	0310403	RUB 3/8" X 3 7/16 X 3 1/4	4
2	1340030	LOCKWASHER 3/8 S/T MED ULTRASEAL	8
3	1410109	HEX NUT 3/8-16	8

Slide onto the tubes until the tube is inserted completely into the flair of the front tube assembly. Once the parts are mated as described, secure the front tube assembly to the boat stop arm tubes using the 1/4" x 3/4" self tapping screws provided. Place a screw so it is in the flared portion of the front tube assembly as shown in Diagram C, Detail B. Drill the self drilling screw through both the front tube assembly and the boat stop arm tube. Repeat this process on the other side of the assembly as shown. Then repeat this process on the other end of the front tube assembly. The assembly is now complete and is ready for final adjustments.

The complete boat stop assembly should again be centered crossways on the hoist. Tighten the U-bolts attaching them to the platform.

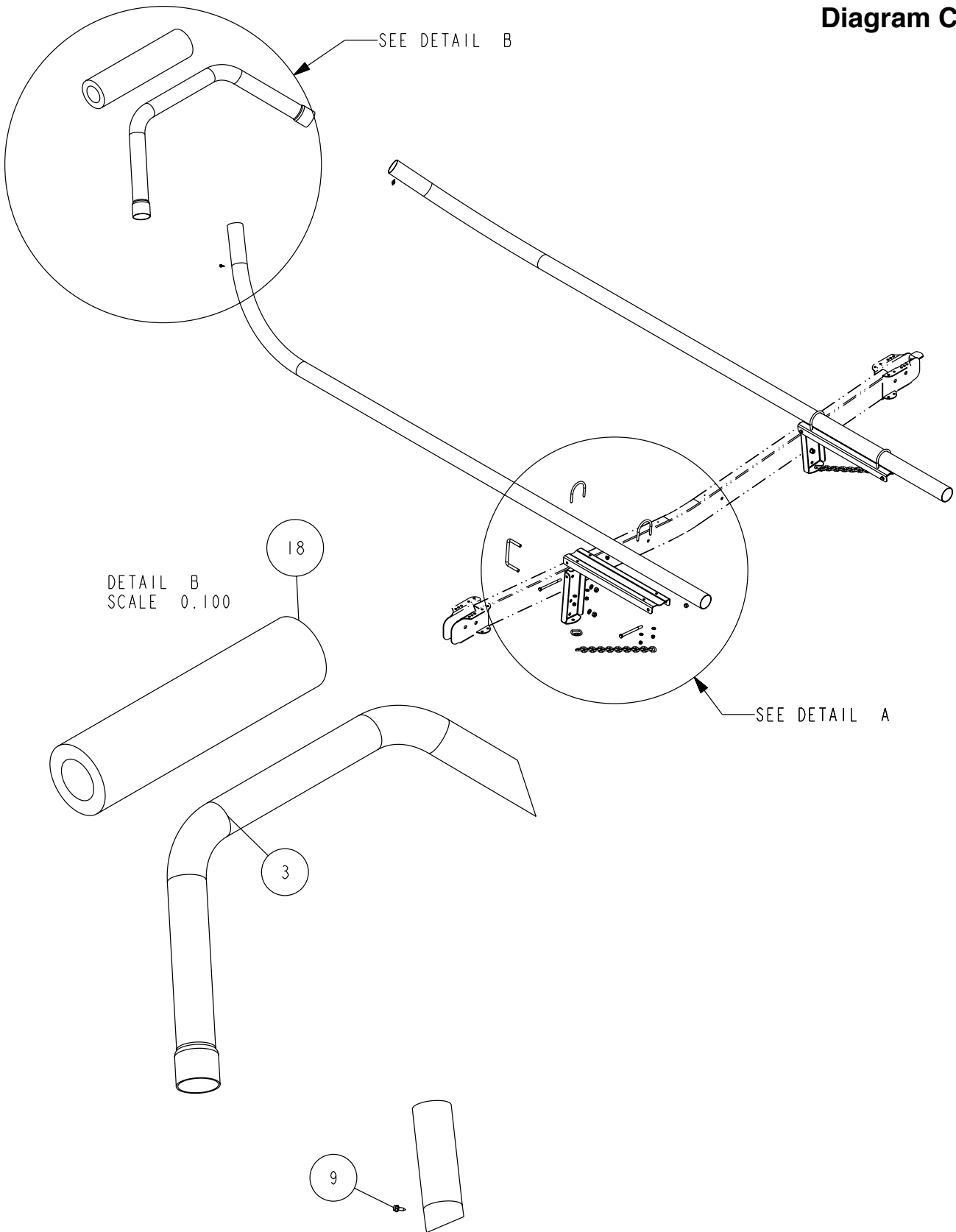
### ADJUSTMENTS

The front end boat stop can be positioned forward or backward so that it will accommodate various length boats. Once the proper position is achieved, tighten the 3/8" x 3-7/16" x 3-1/4" round U-bolts to secure in position.

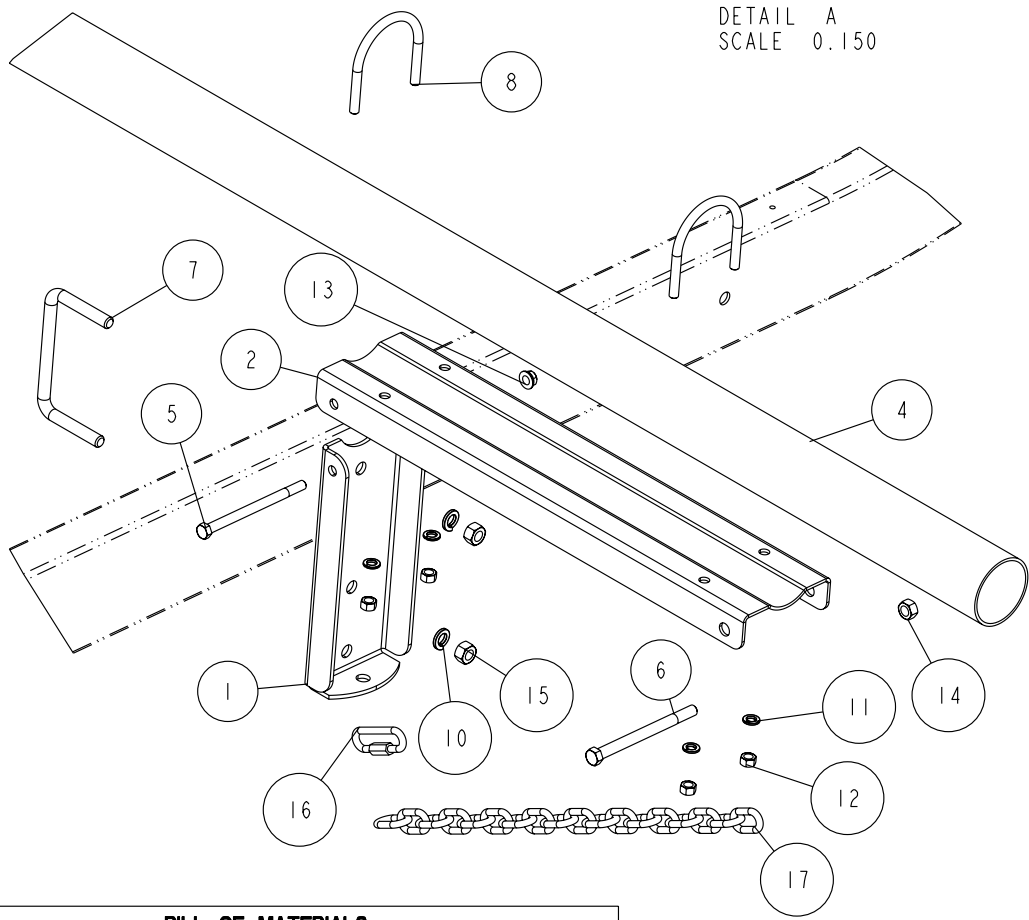
The boat stop is also adjustable for height. The boat stop pad should be located just above the boat bow eye. This is accomplished by removing the 7/16" x 5-1/4" hex bolt in one end of the chain in the arm support assembly, then re-positioning it in a different link until the desired height is achieved. Tighten all bolt not tightened previously.

Adjustment is complete.

# Diagram C



# Diagram D



DETAIL A  
SCALE 0.150

BILL OF MATERIALS			
ITEM	PART #	DESCRIPTION	QTY
-	65918	POLY LOG COVER FRNTEND STOP BLUE	1
1	68235	MOUNT BRACKET	2
2	68236	ARM SUPPORT CHANNEL	2
3	68238	FRONT TUBE	1
4	68239	BOAT STOP ARM TUBE	2
5	0110066	HH 3/8-16 X 5 1/2 CS GR5	2
6	0110085	HH 7/16-14 X 5 1/2 CS GR5	2
7	0310395	SUB 1/2 X 5 9/16 X 3	2
8	0310403	RUB 3/8" X 3 7/16 X 3 1/4	4
9	0810945	SCREW SELFDRILL 1/4-14X3/4	4
10	1310040	LOCKWASHER 1/2 S/T MED	4
11	1340030	LOCKWASHER 3/8 S/T MED ULTRASEAL	8
12	1410109	HEX NUT 3/8-16	8
13	1440101	HEX LOCKNUT FLANGE 3/8-16 W/T&T	2
14	1440139	HEX LOCKNUT 7/16-14 GRA	2
15	1440159	HEX NUT FINISH 1/2-13	4
16	1920013	QUICK LINK 1/4(7MM) PLATED	2
17	2220267	CHAIN 1/4(7MM) X 18 LINKS PC	2
18	3510245	6 IN POLY LOG	1

WHEN MOUNTING TO AN 8" FRAME REPLACE #8 USING 0310401 1/2 X 8 9/16 X 3 SUB

DWG: HA1242MANUAL REV: 1.4+

